



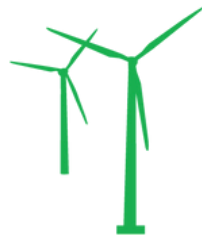
Dundonnell & Salt Creek

 WIND FARMS

Welcome to the August newsletter for Dundonnell Wind Farm and Salt Creek Wind Farm.

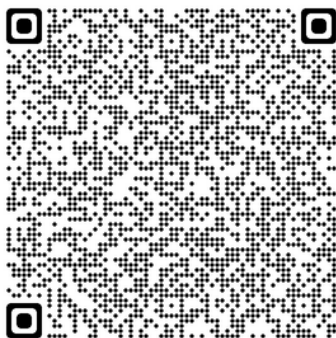
In this edition we're covering:

- What's happening on site for both wind farms
- Benefit sharing for both wind farms



Sign up & stay informed

Hover over the QR code to receive the DDWF and SCWF Newsletters to your inbox. If you don't have email but would still like to receive the newsletter, please call us on 1800 938 458.



Benefit Sharing

Tilt Renewables supported community initiatives over the past 12 months for both Dundonnell Wind Farm and Salt Creek Wind farm.

The programs we supported included:

Dundonnell Wind Farm

- Local schools
- The Dundonnell CFA Shed

Salt Creek Wind Farm

- Hexham Recreation Reserve
- The Mortlake Gift

In total, Tilt Renewables delivered **\$54,371** to the community as part of the Dundonnell and Salt Creek Wind farm Community Funds.

The Education and Scholarship funds will be opening soon.

As part of the Education funds, Tilt Renewables has committed to providing \$15,000 annually for the life of the Dundonnell Wind Farm, which commenced at the commercial operations date of the wind farm. For Salt Creek Wind Farm, a local landholder and Tilt Renewables established an annual scholarship of \$30,000 for the benefit of a deserving local applicant.

Keep an eye out for the following:

1. Dundonnell Wind Farm Education Fund – applications open on 1 September 2024 and closes end of October 2024
2. Salt Creek Wind Farm Scholarship – applications open in October 2024

What's happening on the Dundonnell Wind Farm site?

Over the last 12 months, Dundonnell Wind Farm generated **876,800 MWh** of clean energy. That is enough to power 146,000 households, while avoiding 306,000 tonnes of greenhouse gas emissions. Dundonnell Wind Farm generated over 7.5 GWh in a single day, on 30 May 2024!



Aurora Australis and Dundonnell Wind Farm

Compliance Activities DUNDONNELL WIND FARM

Tilt Renewables continue to implement the Brolga Compensation Plan, with the final Year 3 Report now available on the Project website here: [Compliance — Tilt Renewables](#).

The remote camera spotted a pair of Brolga on 31 August 2023 and 4 September 2023.

Implementation of the Bat and Avifauna Management Plan is ongoing.



Brogles near the Dundonnell Wind Farm

What's happening on the Salt Creek Wind Farm site?

In the last 12 months, Salt Creek Wind Farm generated **116,400 MWh** of clean energy. That is enough to power 19,000 households, while avoiding 40,000 tonnes of greenhouse gas emissions. Salt Creek Wind farm also generated over 1.15 GWh in a single day, on 28th June 2024!



Salt Creek Wind Farm Project site

Compliance Activities SALT CREEK WIND FARM

The second round of the Grey-headed Flying-fox Grant Program is closed, with three projects from Victoria selected for the 2024 period. The Grant Program funds initiatives that protect the Grey-headed Flying-foxes during heat stress events as a means of contributing to the sustainability and conservation of the GHFF population.

This year's grant program includes funding to the Warrnambool Grey-headed Flying-fox Colony in the Warrnambool Botanic Gardens. This funding will:

- Reduce summer canopy temperatures for the colony.
- Reduce mortality rates in the colony during heatwaves events.
- Expand the adjoining habitat.

BENEFIT SHARING

Dundonnell Wind Farm Community Fund Round 1, 2024 recipients awarded

Salt Creek Wind Farm Lend a Hand Fund Round 1, 2024 recipient awarded

We are pleased to support the following successful community groups and initiatives for Round 1 funding.

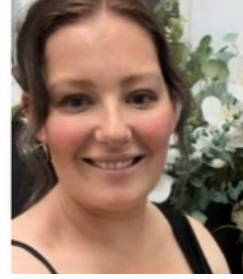
Community Organisation	Funding Approved
St Colman's Primary School Mortlake – funds to replace the damaged shade sails over the playground	\$ 7,000
Mortlake College – funds to improve reading comprehension outcomes for students	\$ 10,000
Derrinallum Yacht Power Boat Club – funds for a new engine	\$ 7,000
Lake Bolac College – funds for the cost of the Downball Australia regional workshop; funds for the downball equipment for students; and funds for linemarking of downball squares onto courts	\$ 3,000
Darlington Field and Game – funds for a shed for their club room	\$ 7,000
Mortlake Kindergarten – funds for installing new blinds at the kindergarten	\$ 2,171
Dundonnell Rural Fire Brigade – funds for a new “quickfill” pump and generator	\$ 2,700
Woorndoo Mortlake Football Netball Club – funds for resurfacing the damaged tennis courts	\$ 7,000
Total	\$ 45,871

Community Organisation	Funding Approved
Lake Bolac Information & Business Centre	\$ 1,500
Woorndoo Football Netball Club	\$ 5,000
Lake Bolac & District Little Athletics Club (LBDLA)	\$ 2,000
Total	\$ 8,500

Across the Dundonnell wind farm and Salt Creek wind farm Community Enhancement Funds, Tilt Renewables proudly sponsored a range of community initiatives in the past 12 months.

Federation University scholarships

Tilt Renewables is proud to support five stellar students through our Foundation Scholarship program with Federation TAFE. With degrees including a Bachelor of Education, a Bachelor of Nursing and a Bachelor of Engineering, these local students will go far in their field.



From left to right, our recipients for the 2024 Foundation Scholarship are Kate Gowans – Bachelor of Education (Early Childhood and Primary), Taliah Kelly – Bachelor of Education (Early Childhood and Primary), Isabelle McLinden – Bachelor of Secondary Education, Kylie Niblett – Bachelor of Nursing, William Young – Bachelor of Engineering (Honours)

Women's Housing

As part of Dundonnell Wind Farm, Tilt Renewables partnered with Women's Housing Ltd and Emma House Domestic Violence Service Inc in Warrnambool. This partnership helps provide safe housing options for 10 women per year from Southwestern Victoria.

In 2023-2024, Women's Housing Ltd and Emma House Domestic Violence Services housed women from the region escaping from domestic violence.

Excitingly, new homes in Camperdown, Hamilton, Portland, Warrnambool and Winchelsea are also nearing completion. Women's Housing Ltd will allocate these new homes to women experiencing family violence, by working with Emma House Domestic Violence Services and other family violence services in the area.



Shed Opening Event

On 31 May 2024, Tilt Renewables attended the opening of the Dundonnell Fire Station, an exciting occasion for the local community and CFA volunteers. The new fire station provides community access to an improved and suitable facility.

In attendance was a member of our executive team, and Tilt Renewables employees.

Tilt Renewables worked closely with the CFA members to provide a new plaque, photos of the wind farm construction process and a poster telling the story of how the community kick-started the development of the wind farm.

The Community Fund Committee set aside 50% of the Dundonnell Wind Farm community fund (\$25,000 per annum over 10 years) to service the loan for the development of the CFA shed.



Tilt Renewables Chief Operations Officer Damien Stanford's address at the Shed opening event

Lifeline

Tilt Renewables funds an employee for Lifeline's Great South Coast Suicide Prevention Services. This funding assists Lifeline to employ a Project Officer to facilitate mental health and wellbeing initiatives for the local community.

Tilt Renewables supported 226 people to participate in cutting edge Suicide prevention and mental health education for the Warrnambool and Portland Community.

This training was attended by:

- MacKillop Family Services
- Social workers
- Volunteers
- Alcohol and drug workers
- Housing workers
- Domestic and family violence workers
- Mental health workers
- Community groups

This training will help Warrnambool and Portland take one step closer to becoming suicide safer communities. Attendees reported back on how useful the training will be for their personal and work life.

LIVINGWORKS

Applied Suicide Intervention Skills Training (ASIST)

LivingWorks ASIST is a two-day interactive workshop in suicide first-aid. ASIST teaches participants to recognise when someone may be at risk of suicide and work with them to create a plan that will support their immediate safety.

Although ASIST is widely used by healthcare providers, participants don't need any formal training to attend the workshop - ASIST can be learned and used by anyone.

Goals and Objectives

ASIST makes a difference. During the 2-day workshop participants will learn to:

- Understand the ways personal and societal attitudes affect views on suicide and interventions
- Provide guidance and suicide first-aid to a person at risk in ways that meet their individual needs
- Identify the key elements of an effective suicide safety plan and the actions required to implement it
- Appreciate the value of improving and integrating suicide prevention resources in the community at large
- Recognise other important aspects of suicide prevention including life-promotion and self-care

2-Day Workshop

WHEN: 20-21 February 2023
8.45-4.30pm each day

WHERE: Flying Horse
10691 Princes Hwy, Warrnambool

COST: This workshop is sponsored by Tilt Renewables. Normally \$595 per person, sponsored rate \$110

CATERED: When booking, you will be asked for dietary considerations

BOOK/ENQUIRE: [HERE](#)
June Anderson
June.anderson@lifeline.org.au

MAXIMUM per organisation = 3 participants

For more information about ASIST, visit www.livingworks.com.au/programs/ASIST/

If you have lost someone to suicide in the last year or so, please speak with us before participating in ASIST.
Dr June Anderson, Group Training Manager
Lifeline Direct 0408847687



If you or someone you know needs support Lifeline is here to help

Call - 13 11 14
Chat - lifeline.org.au
Text - 0477 13 11 14



CFA members with Jacinta Ermacora MP, Cnr Ian Smith, and Tilt Chief Operations Officer Damien Sanford (far left)



Photos of the DDWF construction process for the community to view at the opening day



Photograph of the new CFA Shed (outside)



Barend van der Poll (right) our Head of Asset Management celebrating the day with Grant Wells, Dunndonell Wind Farm Site Supervisor (left)



Community opening day, held on a different day to official opening day on 31 May 2024.

Giddy-up! Hexham Recreation Reserve Committee

In December 2023, Tilt Renewables helped fund new safety gates for the Hexham Recreation Reserve Committee's horse-riding arenas. The riders and horses can now use safe and fit-for-purpose arenas.



Hexham Recreation horse-riders and safety gate



2023 Mortlake Gift

Woorndoo Mortlake Football Netball Club

In 2023, with the help of funding from Tilt Renewables, the Woorndoo Mortlake Football Netball club resurfaced their courts. Prior to the resurfacing works, the courts were unsafe to play on. Now with a fresh coat of Mapei paint, players can enjoy their sports safely.



Woorndoo Morlake Football Netball courts



Woorndoo Chatsworth Landcare Group Community Day

The Mortlake Gift

Tilt Renewables was proud to financially contribute to the Mortlake Athletics Carnival, as part of the Mortlake Gift 2023.

These funds ensured that all ages and stages could participate in a fun and exhilarating Athletics carnival.

Moyné Shire council reported that local spending was up to 107% over the Gift weekend in October 2023.

Woorndoo Chatsworth Landcare Group

Tilt Renewables was pleased to assist the Woorndoo Chatsworth Landcare Group (WCLG) with their Community Day event by funding lunch for approximately 90 attendees. At this event, WCLG members shared information about their restoration activities and showcased the native grasslands of Woorndoo. Paul Kelly of Eastern Maar Aboriginal Cooperation commenced the day with a Welcome to Country.

UPCOMING FUND APPLICATIONS DATES

DDWF Education Fund

Applications for the Education Fund will open on 1 September 2023 and close at the end of October 2023. Keep an eye out for the application on the [Dundonnell Wind Farm - Community & Education Funds — Tilt Renewables](https://www.tiltrenewables.com/assets-and-projects/Dundonnell-Wind-Farm/dundonnell-wind-farm-community-education-funds/) webpage: www.tiltrenewables.com/assets-and-projects/Dundonnell-Wind-Farm/dundonnell-wind-farm-community-education-funds/

The DDWF Education Fund recognises the importance of access to education and training for all ages. The funds need to support an individual/s, a program or a not-for-profit organisation seeking to achieve an educational benefit.

The fund is open to people of all ages and administered by the Community Fund Committee.

SCWF Scholarship

Applications for the SCWF Scholarship will open in October 2024. Keep an eye out for the opening date and application on the [Community — Tilt Renewables](https://www.tiltrenewables.com/assets-and-projects/Salt-Creek-Wind-Farm/community/) webpage: www.tiltrenewables.com/assets-and-projects/Salt-Creek-Wind-Farm/community/



Tilting towards the future.

We are invested in making that happen - for our investors, communities and everyone who works with us. Like our values say: we are people powered; we get things done; and, above all, we lead. Join us as we drive the transition to renewables.



Questions?

If you have any questions, get in touch by calling: 1800 WE TILT (938 458)
Email: info@tiltrenewables.com | Web: www.tiltrenewables.com
Postal Address: PO Box 16080 Collins St West, Melbourne Vic 8007