

Rye Park

WIND FARM

Project update

Rye Park Wind Farm is now fully operational!

Since our last newsletter in May, Rye Park Wind Farm has officially entered full operations. With 66 turbines now fully operational, we are proud to contribute to the economic strength of our region by powering the Cadia Gold Mine, a significant local employer. Additionally, Rye Park Wind Farm is directly supplying clean energy to NSW customers through AGL.

We want to extend our heartfelt thanks for your support and patience as we reached this milestone. We are excited about the next 30 years of operations and the positive impact we can achieve together.

As per the approved [Noise Management Plan](#), Acoustic Compliance testing began in early December for Rye Park Wind Farm. Staff on site have been busy completing regular maintenance, ensuring everything is running smoothly.

This newsletter includes:

- A look back at Project Milestones
- Community Enhancement Fund updates
- Building Stronger Communities program
- Connectivity in the area
- Fire management factsheet

SIGN UP & STAY INFORMED

Scan the QR code to subscribe to receive future newsletters, or email us and we'll add you to the list:
info@tiltrenewables.com



Figure 1: Rye Park Wind Farm, fully operational.

Rye Park Wind Farm Milestones

A look back at some of the key milestones.

The project received its initial Development Consent in 2017. Following this, various approvals and modifications were granted, including a significant modification in April 2021 and another in September 2022. Construction began in late 2021 and as of October 2024, Rye Park Wind Farm entered full operations!



Figure 1: Rye Park pre-construction.

December - 2021

Construction commenced, with construction contractor Zenviron (and their subcontractors), continuing to mobilise staff and equipment resources to the Project.



Figure 3: Recently erected turbines facing north during 2023.

December - 2023

All civil works were complete, with 76% of all turbines built. This marked the start of commissioning.

October - 2024

Rye Park Wind Farm officially entered full operations!

September - 2021

Rye Park Wind Farm received the necessary approvals and reached financial close.

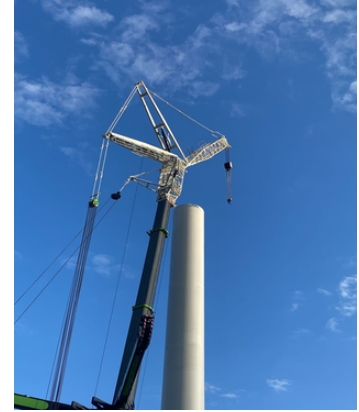


Figure 2: The first tower sections being installed.

December - 2022

The first two tower sections were installed. One third of the foundations were completed.

March and April - 2024

The last turbine was delivered to site and installed in April.



Figure 4: Last turbine blade delivery March 2024

Supporting Mental Health in Schools

Tilt successfully completed an in-kind contribution to support a mental health program in collaboration with AWI Consulting. This initiative provided quicker access to necessary support for children by subsidising the costs of psychological assessments and wellbeing workshops.

From 2022 to 2024, numerous psychological assessments were conducted, providing essential recommendations to support students' learning environments. Additionally, various screenings and referrals to external support services were completed at St Joseph's Boorowa and Boorowa Central School.

In November 2024, emotional regulation and resilience training sessions were held for educators and support teams at local schools. These sessions covered key topics like trauma, resilience, and social-emotional skills, with more training planned for early 2025.



Figure 2: Educators and support staff completing a training session.

Fire Management

We have an updated fact sheet [available on our website](#) with detailed information on fire management.

Tilt Renewables prioritises fire management at all our sites and coordinates closely with emergency services to keep our neighbours safe. Experience has shown our wind farms are a low fire risk. They can also improve firefighting capability by increasing access roads and firebreaks.

Community Enhancement Fund Update

The Rye Park Wind Farm is contributing the following funding each year:

- Hilltops Council: \$162,500
- Upper Lachlan Shire Council: \$40,000
- Yass Valley Council: \$27,500

Independent committees overseen by the Yass Valley, Hilltops and Upper Lachlan councils will review applications and recommend which are funded and at least 20% of the funds will be allocated to educational needs.

For any civic-minded community members who may be interested in joining these committees, please reach out to each council directly.



Figure 1: Staff at the Boorowa Central School

Connectivity Issues

We know that some community members may be experiencing issues with radio, television, internet, or phone reception since we entered full operations.

If you have experienced any issues with the above, please send an email to ryeparkwindfarm@tiltrenewables.com or call 1800 WE TILT.

Visual Mitigation Program

With all wind turbines now erected, we wanted to remind you that non-associated residences, where the dwelling is within 4km of a wind turbine, may be eligible for participation in the Visual Mitigation Program.

We have previously notified eligible residents of the program and had a number of community members participate. If you have any questions or would like further information, please get in touch with us by emailing ryeparkwindfarm@tiltrenewables.com or call 1800 WE TILT.



Tilting towards the future

We are invested in making that happen - for our investors, communities and everyone who works with us. Like our values say: we are people powered; we get things done; and, above all, we lead.

Join us as we drive the transition to renewables.