

Rye Park Wind Farm

Newsletter
Edition

7

December
2019

Project update

As the year comes to a close, we would like to take this opportunity to wish you a safe, healthy and happy festive season.

Our trip to Rye Park, Yass and Boorowa in November was invaluable, and while we acknowledge that it was overdue, we thank you for your attendance at these sessions. We value your feedback and have taken the time to review it, share it with our internal stakeholders and determine where we can improve or meet expectations.

This December Newsletter endeavours to capture a summary of your feedback and provide further explanations where possible.

The team at Tilt Renewables wishes you a happy, healthy and safe holiday season. We thank you for your support and feedback through 2019 and look forward to a positive 2020.

Proposed modification at a glance

A proposed modification to the Rye Park Wind Farm development consent will result in a more efficient wind farm.

Key changes and benefits include:



A **reduction in turbines** from 92 to 80 and **increase in tip height** from 157 metres to 200 metres.



Refinements to the site layout, access tracks and supporting infrastructure, to provide greater certainty about potential impacts and how the wind farm will look and operate.



More clean energy for Australian homes and businesses

An increase in generation capacity from 327MW to 448MW could power around 240,000 homes - an increase of 70,000 compared to the approved project.



Carbon emission savings

Producing more clean energy means more carbon savings - up from 800,000 to over 1 million tonnes per year. That's equivalent to taking 370,000 cars off the road each year.

MERRY
Christmas



Proposed changes to the approved project

We are proposing the following modifications to the approved Rye Park Wind Farm development consent to increase project benefits and address design challenges.

Project component	Current (approved)	Proposed (modification)	Change
Number of turbines	92	80	-12
Height of turbines (maximum tip height)	157m	200m	+43m
Operations and maintenance buildings	2	1	-1
Collection substations	3	1	-2
Construction truck routes	Multiple options	Preferred option	Removal of options



Feedback on proposed changes to the approved project

What we asked:

Development consent modification:

Does the proposed modification raise any new concerns or ideas for you?

Benefit sharing: Do you have suggestions for how Tilt Renewables can contribute positively to your community?

Communication and engagement:

How would you like us to consult with you and keep you informed about the project in future?

What we heard:

We recorded around 200 individual comments (from feedback forms, conversations and emails) during the consultation period. Of all comments recorded the vast majority were related to the proposed modification (40%), construction (20%) communication and engagement (15%).

A broad range of other topics, including benefit sharing (4%), were also discussed. While some of these topics are not directly relevant to or actionable in the project's current stage of development, they have all been recorded so that they can be considered at the appropriate time (e.g. feedback about construction methodology and mitigation measures will be important in the development of management plans).

Modification assessment process

We expect to apply for a modification to the existing Rye Park Wind Farm Development Consent in early 2020.

2020

Modification application

Following community consultation, we expect to finalise a modification application and submit it to DPIE for assessment in early 2020.

Community information sessions

We will be available to discuss the final modification and environmental assessment with locals during the DPIE assessment and formal submissions process.

Formal assessment and submissions

The modification application will be assessed by DPIE. It will be placed on public exhibition and submissions may be made in response to the modification.

2021

Assessment decision

We expect that it will take around 12 months for the modification to be assessed.

Modification topics raised

In relation to the modification and environmental assessment reports, these are currently being finalised by the Tilt Renewables planning team. Once they are lodged, we will share them with the community and will undertake further engagement.



Turbine efficiency

Work undertaken in the past six months has given us a clearer picture of how the Rye Park Wind Farm could look and operate. This work has also identified some changes that would allow the wind farm to be built and operated more efficiently.

Higher wind speed translates to more energy. The amount of energy available in the wind is proportional to the cube of wind speed, and there is a linear relationship between energy and swept area. Employing the use of taller turbines with larger rotors results in a larger swept area.



Noise assessments

There will be no change to the conditions we must meet under the approved Development Consent. This means that despite larger turbines being proposed, we will still need to meet our current compliance obligations. However, we are undertaking an assessment based on the indicative larger turbine for the project, which will accompany the modification application.



Visual impact

A visual impact assessment is being undertaken to assess the proposed increase in the tip height of the turbines (to 200m) and the reduction in the number of turbines. This assessment will include an assessment of any change to the potential cumulative visual impacts of the nearby Bango Wind Farm.

The visual impact assessment will be peer-reviewed, contain wireframe diagrams from nearby dwellings and photomontages from three key public viewpoints that were assessed as part of the original Development Consent application.

The Development Consent allows for visual impact mitigation for dwellings within 4km of a wind turbine. Owners within this area within the first five years from the commencement of construction may request Tilt Renewables to investigate landscaping and visual screening on their land to minimise the visual impacts of the development on their residence.



Shadow flicker

Shadow flicker is normally modelled out to a distance of 265 times the blade chord (which is typically around 4 to 5 m), or 10 rotor diameters from the turbines, based on UK and Australian guidelines. Beyond this distance the intensity of the shadow is assumed to fall below a moderate level and therefore be unlikely to cause annoyance.

With larger machines it is therefore possible that shadow flicker effects will extend further from the wind turbines. Under the modification application, shadow flicker is being reassessed considering the proposed increase in tip height of the proposed turbines. The Development Consent has requirements for shadow flicker to not exceed 30 hours per annum at nearby non-participant dwellings, this will not change as part of the proposed modification.



We want to
hear from you.



We understand that local people
have a strong interest in the
Rye Park Wind Farm.

You can sign up and stay across our
latest updates at ryeparkwf.com.au



Vegetation clearing and biodiversity

The biodiversity surveys on the wind farm site have already been completed and will also be included in the modification application. The assessment considers impacts to ecosystems and individual species including birds and bats.

We are currently undertaking biodiversity assessments along all road options that could be used to access the wind farm site during construction. To understand the seasonality of the flora and fauna species, surveys have been conducted monthly over a 6-month period. Once a preferred transport route has been selected we will be able to quantify the vegetation clearing required for both the wind farm and road upgrade works, and this will be submitted as part of the modification application.

The Bird Utilisation and Impact Assessment assesses all bird species recorded and with a reasonable likelihood of occurring in the project area. During the consultation sessions three birds were discussed as species of particular concern.

Potential impacts to **Superb Parrots** will be addressed within the assessment. The Superb Parrot breeding season occurs from September to November but can extend into December and January as well, depending on the particular season.

Swift Parrots will also be considered in the assessment. The Swift Parrot is a winter migrant in that they occur on the mainland through winter months. While in the warmer months they are south in Tasmania.

The **Diamond Firetail Finch** has not been recorded on the site, however this species was recorded in previous surveys undertaken for the project. Therefore, the Diamond Firetail Finch will be considered in the assessment prepared for the modification application.



Roads (construction and transport routes)

Wind Farm construction traffic is managed by the use of an approved Traffic Access Management Plan (TMP). The TMP identifies the approved routes for all contractors to follow eliminating construction vehicles from other roads. Over dimensional loads, such as blades, nacelles and tower sections are also required to follow the approved routes of the TMP. Light vehicle traffic (e.g. private vehicles) movements are not usually covered by the TMP.

Some of the approved transport routes in the TMP will be upgraded to accommodate the large equipment needed to build the wind farm. The upgrade works will be a disruption to local traffic and will require specific traffic management to ensure impacts are minimised. Once the works are complete the local community will benefit from the improved road infrastructure. During the construction of the project the identified roads will be maintained by the wind farm.

During construction we will endeavour to keep the community updated on any road disruptions and large equipment movements to minimise impact to others.

Non-modification topics



Fire management

Fire safety is a key focus for Tilt Renewables from site development through construction to operations. We currently implement a variety of preventative and reactive controls across our operating and construction sites. We will consult further with key fire authorities in preparing the specific management plans for the Rye Park Wind Farm, as well as during the construction and operation of the project.

At our Dundonnell Wind Farm site in Victoria that is currently under construction, we regularly communicate with the local group and district CFA organisations. We have recently arranged proactive meetings to discuss the fire season in Victoria, such as what will be occurring on our site, and the preventative and reactive measures that will be employed.



Erosion

We acknowledge that the community has strong local knowledge of the land, and we recognise that there will be challenges regarding the management of land through the construction of the wind farm.

For example, erosion will be managed through improvements in the detailed design of the site and through the implementation of construction measures tailored to the landscape.

In addition, we hope to employ skilled and knowledgeable locals to support site preparation and construction efforts of the project. We encourage businesses to register their interest in working on the project via the project website, under our Goods and Services Register.



Water for construction

We understand that water is a major concern for the community and it will be paramount to us that we are not seen as taking water from an already drought affected region. At this stage we don't have a detailed water sourcing and minimisation strategy, however this doesn't mean we aren't thinking about one.

We will consider how water is sourced and used under future scenarios and conditions, and we will ensure the supply of water does not adversely impact the community's access to this resource.

* We would like to take this opportunity to apologise for the misplaced photo that was included in the October Newsletter.



Benefit sharing

We are committed to sharing the benefits of the Rye Park Wind Farm with local communities.

Rye Park Wind Farm is an important project and long-term commitment for us. Our team will become part of the local community for at least 25 years.

We are always looking at ways to contribute meaningfully to the communities where we work. On other projects we have provided sponsorships, education programs and training and employment schemes – but all communities are different, so we don't take a one-size-fits-all approach. For the Rye Park Wind Farm, as a start we have confirmed community funds and neighbour agreements, however we are keen to receive feedback from you to understand and determine the best ways we could contribute positively to your community.

Community Enhancement Fund:

Tilt Renewables has an agreement with local councils to provide \$2500 per constructed turbine per year to a community fund. The proposed modification would reduce the number of turbines at Rye Park Wind Farm but we don't want this to reduce financial support for the community – so we are committing to providing community funding for 92 turbines.

Funding for any unbuilt turbines could be added to the council administered community fund or directed toward other local initiatives.

Neighbour agreements:

We are currently offering voluntary Neighbour Agreements to some landowners whose property neighbours the wind farm. These agreements provide an opportunity for landowners close to the wind farm to share in the financial benefits of the development.

The agreements are in addition to our other benefit sharing initiatives and are part of our commitment to contribute positively to the broader community.

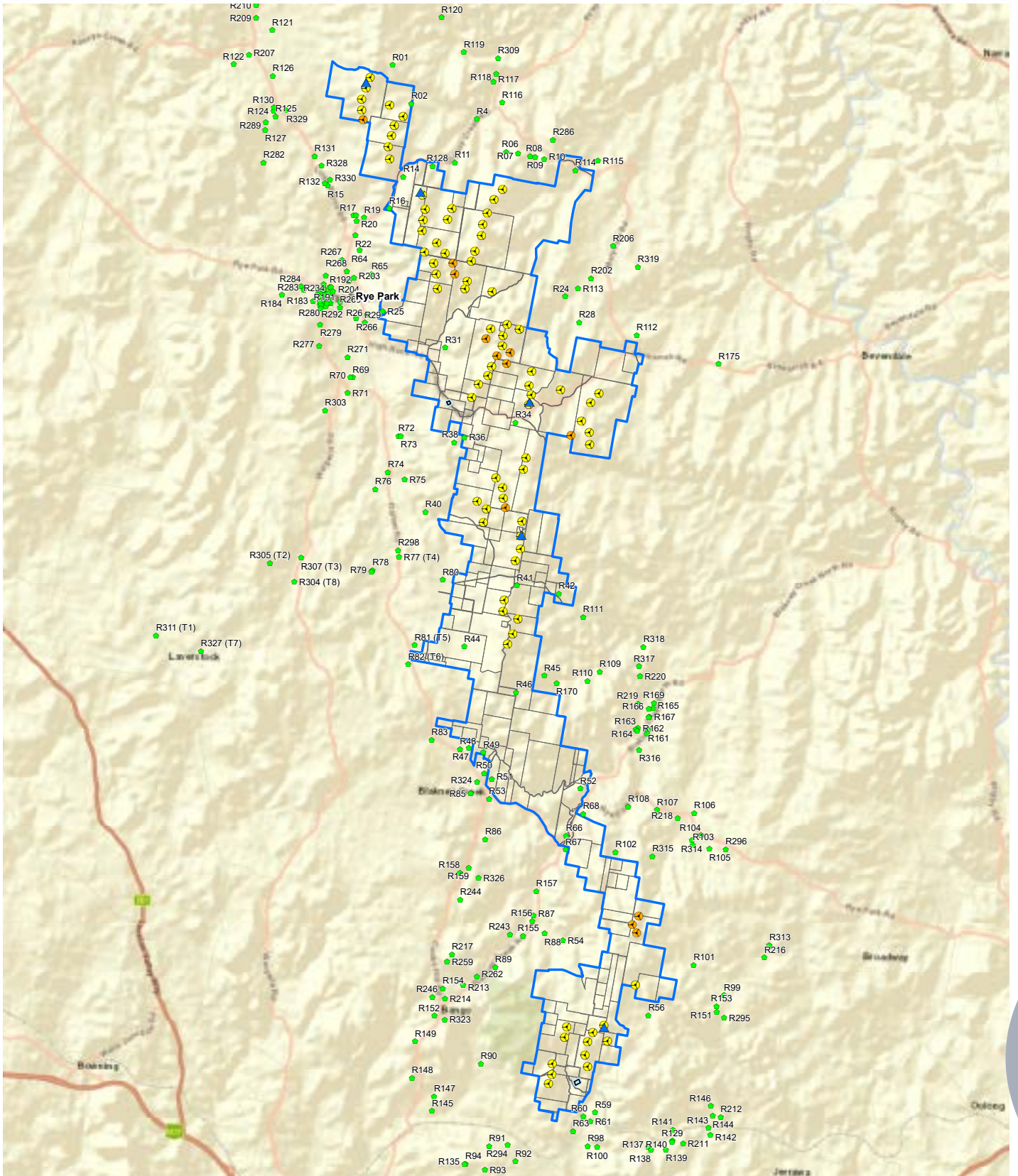
The neighbour agreements do not prevent people from making a submission on the project, nor do they remove the need for us to comply with conditions of the development consent for the wind farm.









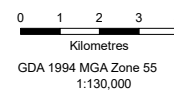
Are there other ways we could work together and contribute positively to your community?

Your feedback will help inform our approach to working with and sharing benefits with the local community.





-  Indicative Turbine Layout (80 WTGs)
-  Turbines Being Removed
-  Temporary Masts
-  Dwellings
-  Substations
-  Site Boundary





Thank you

What's next?

We will be out to talk with the community again when the modification application has been finalised and has been reviewed by the NSW Department of Planning Industry and Environment.

This will involve sharing and discussing the findings of the application, including accompanying environmental assessment reports so that people can access and understand information, and make informed submissions regarding the modification, should they wish to.

Some of you have indicated that you would like one-on-one visits. We have these listed and will be in touch in the new year to arrange a time to meet with you.

If you would like to arrange for us to meet with you, please send us an email or call us using the details at the bottom of this page.

How would you like to hear from us?

We understand that our previous newsletter distribution may not have reached you. We are therefore asking that you please contact us to let us know how you would like to hear from us moving forward. Please send us an email or call us and we will update your details in our database.



For more information, or to provide any feedback, please visit the project website www.ryeparkwf.com.au

Contact us

Web: www.ryeparkwf.com.au

Email: ryeparkwindfarm@tiltrenewables.com | **Phone:** 1800 WE TILT (1800 938 458)

Postal Address: PO Box 16080 Collins St West, Melbourne Vic 8007

