

# Liverpool Range Wind Farm

CONSULTATION  
DATES  
CONFIRMED

We are pleased to confirm that pre-lodgement consultation activities regarding our proposed Modification Application to the Liverpool Range Wind Farm Development Consent have now been scheduled.

## MARK YOUR CALENDAR

Consultation activities will take place in Coolah and Cassilis during the week of Monday 25 October to Friday 29 October 2021.



Newsletter  
Edition

7

September  
2021

We are pleased to welcome on board our consultation team, **C7even Communications**, who are based in Tamworth and will be facilitating the drop-in consultation sessions on our behalf. The Tilt Renewables Team based in Melbourne will be available during the consultation days via video link, however we encourage you to call us anytime if you have questions, on 1800 WE TILT.

There will be three full days of drop-in sessions (Tuesday to Thursday) and we will also accommodate virtual appointments on Monday and Friday, subject to availability. Below is the general schedule for the drop-in consultation sessions planned for 26-28 October 2021.

### TUESDAY, 26 OCTOBER

#### Coolah Youth Hall

10.30am – 12.30pm  
Drop-in information session

12.30 – 1.30pm  
Technical specialist webinar:  
**Visual impact: Moir Landscape  
Architects Pty Ltd**

1.30 – 7pm  
Drop-in information session

### WEDNESDAY, 27 OCTOBER

#### Coolah Youth Hall

10.30am – 12.30pm  
Drop-in information session

12.30 – 1.30pm  
Technical specialist webinar:  
**Noise: Sonus Pty Ltd**

1.30 – 7pm  
Drop-in information session

### THURSDAY, 28 OCTOBER

#### Cassilis Bowling Club

10.30am – 12.30pm  
Drop-in information session

12.30 – 1.30pm  
Project Information Session webinar:  
**Tilt Renewables**

1.30 – 7pm  
Drop-in information session

*Hard copy feedback forms will be available at each session, as well as an online feedback form that can be completed on the Project webpage. We will keep it open for the two weeks following 29 October. We will collate all feedback received and report back to the community on what we learned prior to lodgement of the Modification Application.*



## Register your attendance at the consultation days

In order to assist us in anticipating and managing attendance capacity on all consultation days, we kindly ask that you register your attendance via the following link below or by scanning the QR code. It is not mandatory however it will assist us with managing a Covid safe environment.

<https://forms.office.com/r/cykCe6r16R>

## Purpose of this consultation

The purpose of pre-lodgement consultation is to get feedback on the proposed modifications to the Development Consent, prior to lodgement of an application with the NSW Department of Planning, Industry and Environment (DPIE).

While consultation on the proposed modifications will take place during the designated week 25 - 29 October, we are always available to take your calls or respond to your emails. Alternatively, the Liverpool Range Wind Farm Project webpage [www.liverpoolrangewindfarm.com.au](http://www.liverpoolrangewindfarm.com.au) is your go-to source for up-to-date project information.

During the week commencing 18 October 2021 we will upload and make available on the Project webpage a suite of consultation material relating to the Modified Project, such as but not limited to, printable fact sheets, maps and photographic depictions of the Approved and Modified projects.

## Technical Specialist Presentations – Noise and Visual Impact

We asked the community in our September 2020 newsletter what technical specialist presentations would be desired during consultation. We received few responses, however those we did receive indicated noise and visual impact as of specific interest. We have taken this feedback on board, and have invited the technical specialists in noise and visual impact who have been working on the Project to present their findings and answer any questions. Due to COVID-19 travel restrictions, these presentations will be via webinar.

You will need to book to watch the technical specialist presentations, as attending the consultation venues to watch the webinars will be subject to limited capacity under COVID-19 restrictions.

You can register on the Project webpage OR you can hover over the QR code below to book. We will send you a link to tune in from your own computer or device. The webinars will be recorded so if you miss out, they will become available to watch on our website. Please call us if you wish to attend in person.

**We encourage you to read through the information material before attending the information sessions, however we will have a suite of material on display and available to takeaway should you not get a chance to.**



BOOK A WEBINAR



Scan the QR code to book to watch the presentations online, or register at: [www.liverpoolrangewindfarm.com.au](http://www.liverpoolrangewindfarm.com.au)



## Liverpool Range Wind Farm Transmission Line Info

As part of the Liverpool Range Wind Farm project, Tilt Renewables is proposing to build approximately 100 km of overhead transmission line from within the wind farm site to the network connection at Ulan, generally parallel to Ulan Road. Some works will be required to upgrade some of TransGrid's existing assets, such as tower strengthening works required at the point of connection.

## Central-West Orana REZ Transmission Line (TransGrid)

We are aware of the Central-West Orana Renewable Energy Zone (REZ) Transmission Line proposed by TransGrid south of the Golden Highway. The Liverpool Range Wind Farm does not depend on the TransGrid proposal to connect into the national grid.

## Why are we proposing changes to the Approved Project?

The Liverpool Range Wind Farm project received planning approval for up to 267 turbines in March 2018, and since then there have been advancements in wind turbine technology. The latest turbines, while larger, are more efficient, meaning the Project could be built with fewer turbines while powering more homes with clean energy.

Work is underway to progress the Project towards construction, including more accurate estimates of ground disturbance and vegetation clearing for the wind farm, transmission line and public road upgrades. The optimisation work undertaken since late 2019 has identified changes to the Approved Project that would allow the Project to be built and operated more efficiently.

So, what are changes being proposed to the Approved Project and what do they mean?



A **reduction in maximum number of turbines** where we are currently considering a reduction of up to 44 turbines from 267 to 223 (subject to final design optimisation studies). **Increase in maximum blade tip height** from 165 metres to 250 metres above ground level (AGL) (increase of 85 m).



**Refinements to the turbine layout, access tracks and supporting infrastructure**, to provide greater certainty about potential impacts and how the Project will look and operate.



Minor adjustments to the **Transmission Line** alignment.



Addition of a **Battery Energy Storage System (BESS)** either at the proposed network connection at Ulan or within the wind farm site.



Modification of the **Over-dimensional (OD) vehicle route**, including road and intersection upgrades, between the Port of Newcastle and the Project site to enable the transport of longer blades and other larger wind farm components.



Updates to **native vegetation clearance** thresholds to account for road upgrades and optimised design/layout.



**More clean energy for Australian homes and businesses** resulting from an increase in generation capacity from approximately 1,000 MW to a potential capacity of approximately 1,338 MW at full build. This could power around 670,000 homes annually - a potential increase of 170,000 compared to the Approved Project.



Producing more clean energy means more **carbon emission savings** - up from 2.3 million tonnes to over 2.9 million tonnes per year. That's equivalent to taking 943,000 cars off the road each year.



**Energy security as part of the energy transition** - at full development, the Liverpool Range Wind Farm will make a significant contribution to replacing generation capacity that will need to be filled from retiring coal-fired power stations.

### Project Snapshot Approved Project

#### Location

East of Coolah and north of Cassilis, NSW

#### Turbines

Up to 267 (Approved Project)

#### Installed capacity

About 1000 MW

#### Project investment

\$1.5 billion

#### Project status

Planning and environmental approvals received  
Modification Application being prepared.

#### Environmental benefits

The Approved Project will provide enough clean energy to power more than 500,000 homes and save 2.3 million tonnes of greenhouse gas emissions, the equivalent of removing 750,000 cars from our roads.

#### Economic benefits

A Community Enhancement Fund will operate for the Project, providing \$3000 per wind turbine, per year for the life of the Project for community investment. The Project will also generate a boost for local businesses such as accommodation providers, hospitality businesses, service stations and fencing contractors.

#### Employment

Up to 800 direct jobs during construction and up to 47 full-time staff during the 25 plus years of operation.

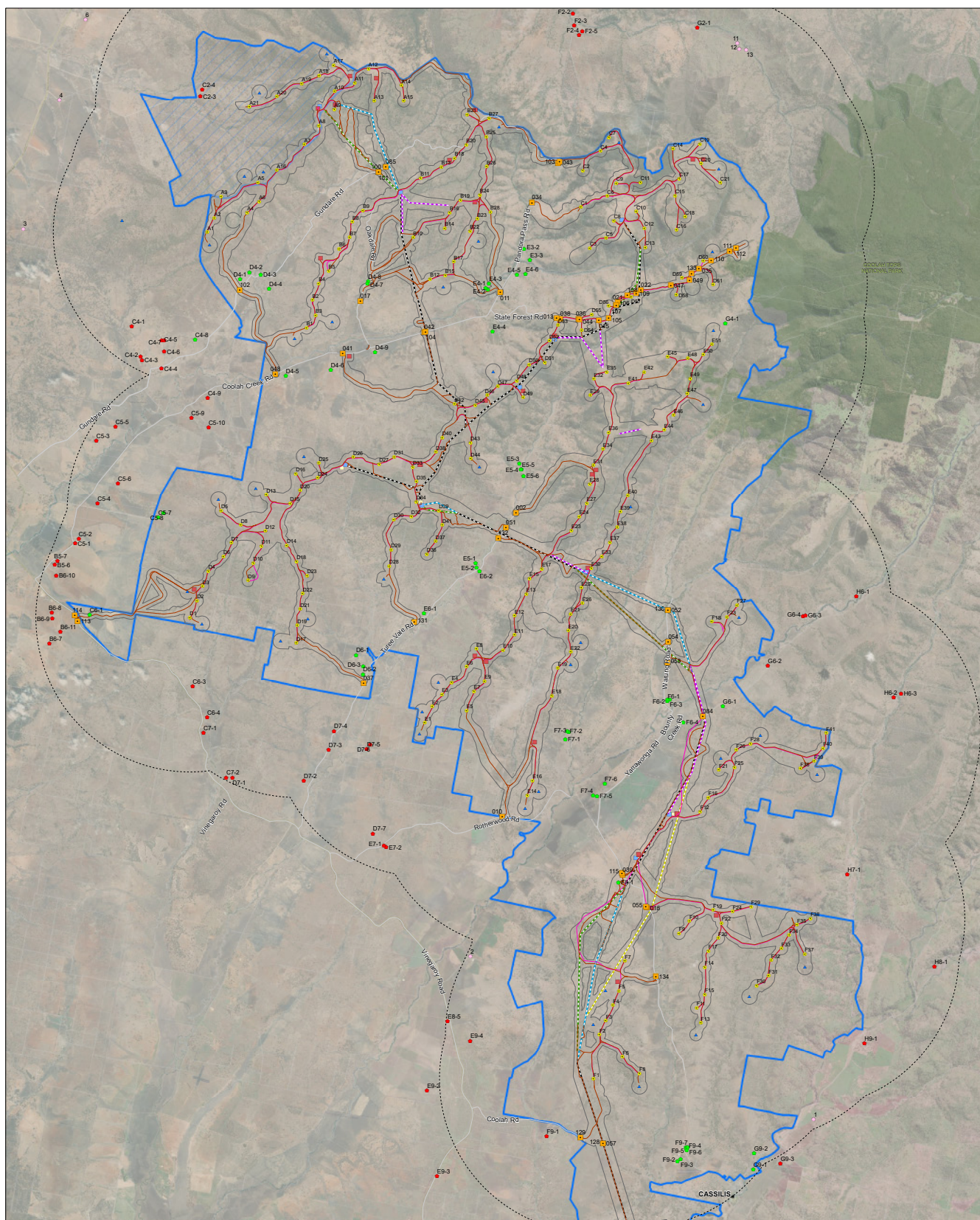


### 1-ON-1 APPOINTMENTS

**We will endeavour to facilitate virtual appointments with community members upon request. Please contact us by phone or email, should you wish to make an appointment for either Monday 25 October or Friday 29 October. We are more than happy to meet with groups too.**



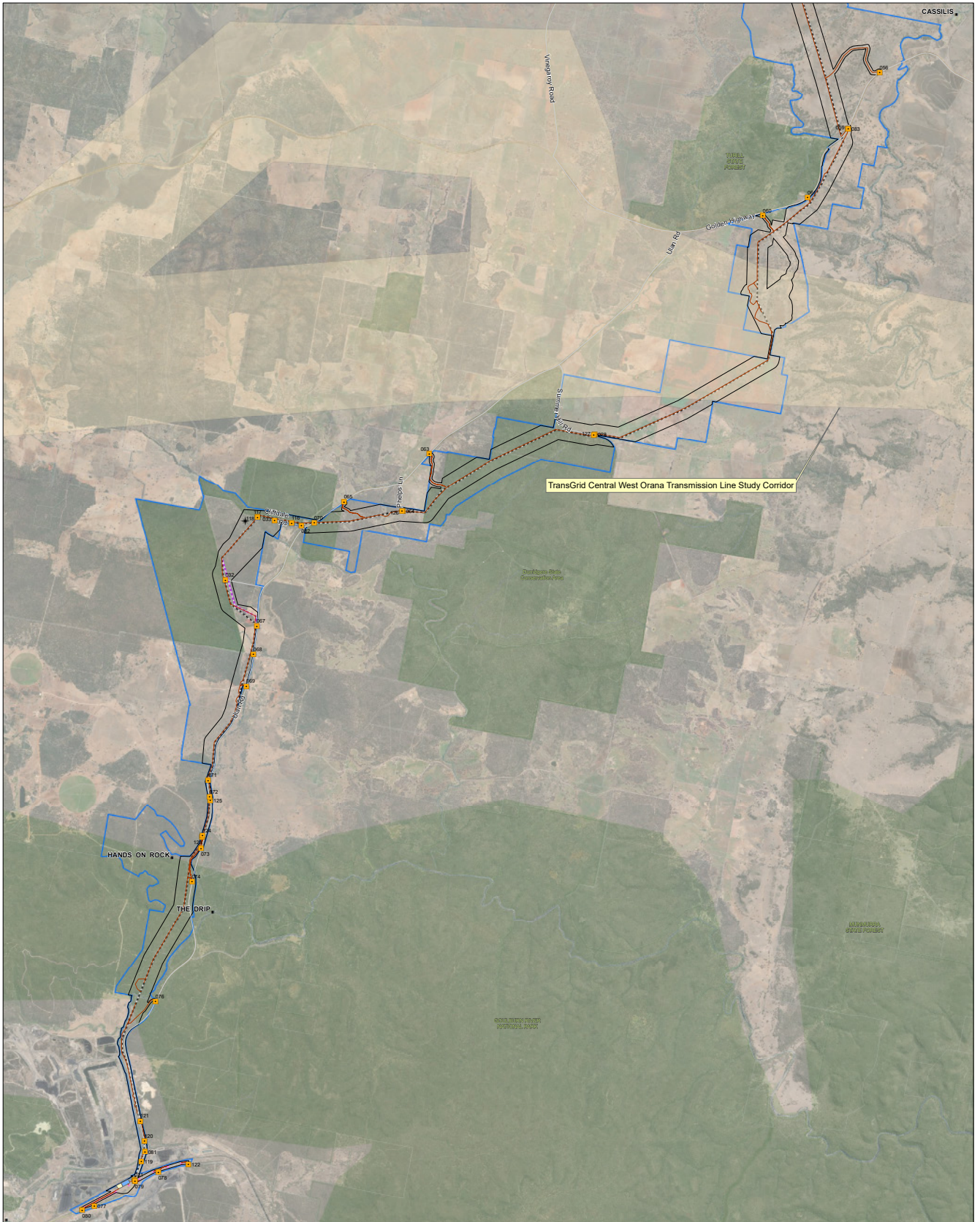
# Liverpool Range Wind Farm Layout Map - Modified Project



<b>Legend</b>		<b>Modified Infrastructure Layout (223 Turbines)</b>		Document Path: G:\GIS\Project Data\Development\NSW\Liverpool\Map\Working\LRWF_AL63B_Modified Wind Farm Layout_AD_20211001.mxd	
Modified Site Boundary	Associated Dwellings	Potential Permanent Met Mast Locations	Potential Site Access Points	Date: 01/10/2021 Version: B  Kilometres GDA 1994 MGA Zone 55 1:40,000	
Under Negotiation - To Be Confirmed	Non-associated Dwellings	Potential Battery (BESS) Locations	Transmission Line		
Cadastral Boundary	Non-associated Dwellings (newly included for Modified Project)	Potential O&M Facility, Batch Plant, Construction Compound Locations	Transmission Line Route (Preferred)	Transmission Line Route (Alternate 1)	
	Underground 33kV Cabling	Potential Substation Locations	Transmission Line Route (Alternate 2)		



# Liverpool Range Wind Farm Transmission Line Map - Modified Project



**Legend**

Modified Site Boundary	Modified Development Corridor	Switchyard at Ulan
Cadastral Boundary	Transmission Line	TransGrid Upgrade Works at Ulan
TransGrid Central West Orana Transmission Line Study Corridor	Alternate Transmission Line (under negotiation - to be confirmed)	Potential Site Access Points
	Potential Battery (BESS) Locations	Potential Bench Location

Document Path: G:\GIS\Project Data\Development\NSW\Liverpool\Maps\Working\LRWF\_AL64B\_Modified Transmission Line Layout\_A0\_20210930.mxd

Date: 30/09/2021  
Version: B

Kilometres  
GDA 1994 MGA Zone 55  
1:30,000





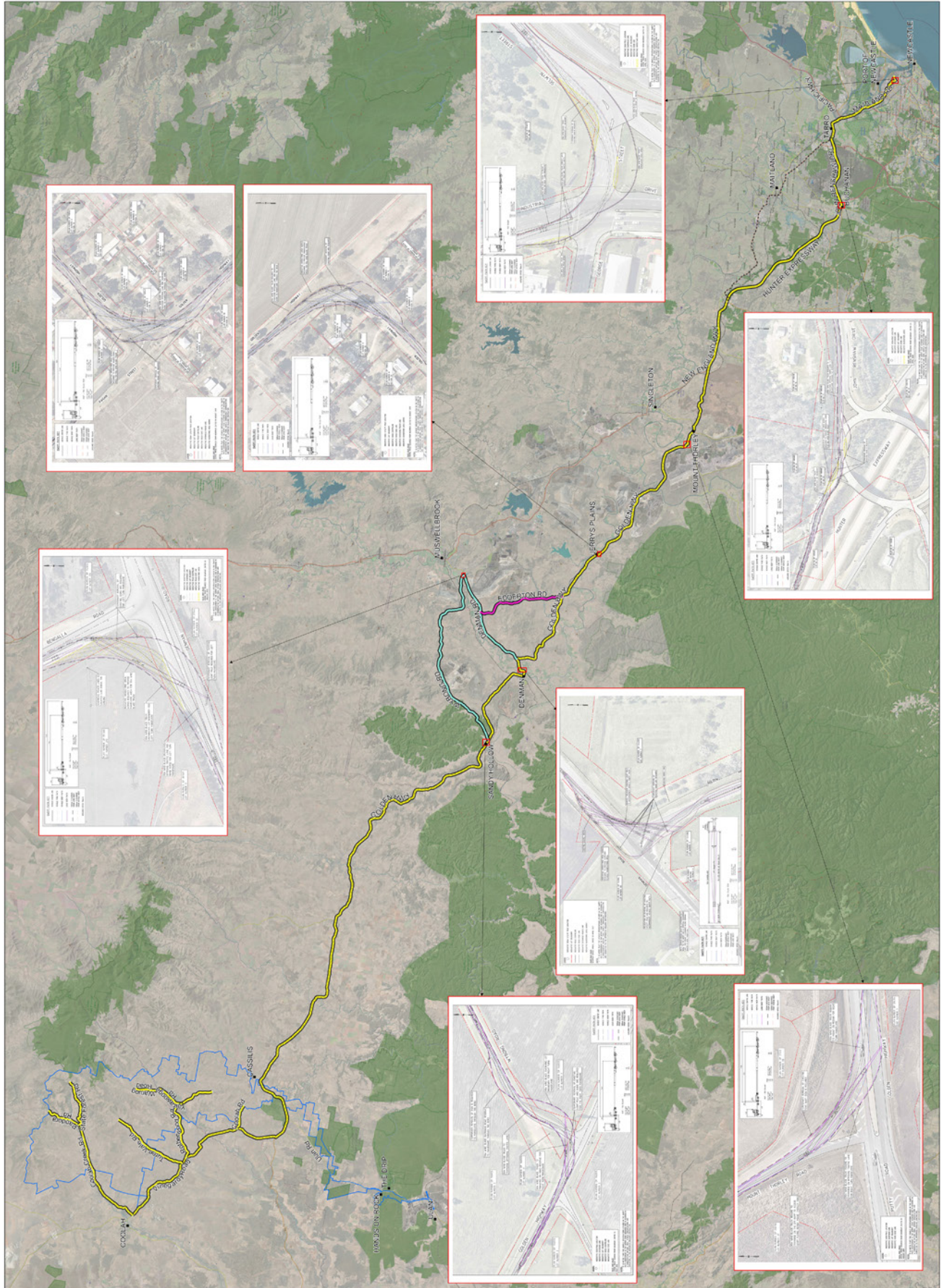
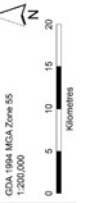
# Liverpool Range Wind Farm Transport Route Map



### Legend

- Modified Site
- Boundary
- Modified OSOM Haulage Route
- Modified OSOM Haulage Route (loads greater than 5.2m high)
- Alternate Modified OSOM Haulage Route (all loads)
- Approved OSOM Haulage Route

Date: 30/09/2021  
Version: B



## Environmental Impact Assessments – Fact Sheets

We are preparing fact sheets on the following environmental impact assessments to inform you of the key changes proposed by the Modified Project, the assessment methodologies that were implemented, the key findings compared to the Approved Project and the proposed mitigation measures. You will be able to find these fact sheets on the Project webpage from 18 October 2021.

You can also request for us to post you an information pack, just give us a call: 1800 WE TILT (938 458).


 Aboriginal Cultural Heritage Assessment


 Aviation Impact Assessment

 Biodiversity (Bird & Bat) Assessment

 Biodiversity (Vegetation) Assessment

 Electromagnetic Interference Assessment

 Noise Assessment (Construction)  
Noise Assessment (Operational)

 Preliminary Hazard Assessment  
(Battery Energy Storage System)

 Shadow Flicker Assessment

 Transport & Traffic Assessment

 Visual Impact Assessment

### Additional Fact Sheets:

 Summary of Proposed Modifications

 Battery Energy Storage System (BESS)

 Economic Impact Assessment

 Project FAQ

 Transmission Line Information

 Wind Farms FAQ



## Powering Australian Renewables

### Consultation approach with C7even Communications

C7even Communications have been contracted to assist us with face-to-face consultation. As communications professionals based in Tamworth, NSW, the team from C7even Communications have an in-depth knowledge of the region and the approvals processes of significant infrastructure projects.

Whilst there are limitations on the Melbourne based Tilt Renewables team being able to travel to Coolah and Cassilis, C7even will be the extension of our project team. They will have a good understanding of the the Project and the proposed modifications, however where further information is required, the Melbourne based team will be available via video-conference to answer questions. Computers will be available at each of the venues where you will be able to log on and communicate with the Tilt Renewables Team in Melbourne.

Outside of the specified consultation days, we are still always available via the 1800 WE TILT phone number to assist you with any Project related queries.

[www.c7even.com.au](http://www.c7even.com.au)

### PowAR acquisition complete

On Tuesday 3 August, Tilt Renewables Limited (Tilt Renewables), confirmed that its New Zealand incorporated subsidiaries were acquired by Mercury Wind Limited and 100% of the shares in Tilt Renewables were acquired by Powering Australian Renewables (PowAR) group.

While this change in ownership sees us part ways with the New Zealand side of our business, PowAR, which is 100% Australian owned and operated, won't be changing how we operate, and we will remain as Tilt Renewables.

PowAR is a partnership between QIC, the Future Fund and AGL Energy Ltd. PowAR is the largest owner of wind and solar generation in Australia – and the largest renewable energy generator after Snowy Hydro – and has now developed, owns and operates more than 1,313 MW of renewable generation capacity, with seven operating wind and solar farms, two others in the final stages of commissioning and one wind farm (Rye Park) due to commence construction in 2021.



## Employment

A wind farm project brings many direct and indirect opportunities for employment to the region during both the construction phase and ongoing operations. Construction provides an economic boost for regional communities by increasing demand for local goods and services, such as accommodation, hotels, restaurants and cafes. We are committed to employing local people and buying local wherever possible.

Most regions have a range of businesses that may provide services to the construction of a wind farm. These include:

- Domestic scale electricians
- Transport operators
- Machine operators
- General labourers
- Quarries
- Concrete suppliers



## Community Consultative Committee

The Community Consultative Committee (CCC) plays an important role in engaging with the community and stakeholder groups and providing feedback from the community for consideration as part of the development.

The Project team has been sharing information and receiving valuable feedback at the CCC meetings held roughly every 3-4 months. Meeting minutes can be found on the Project's webpage: [www.liverpoolrangewindfarm.com.au](http://www.liverpoolrangewindfarm.com.au)

## BENEFIT SHARING

### Voluntary Planning Agreement (VPA)

Tilt Renewables has entered into a VPA with Warrumbungle Shire and Upper Hunter Shire Councils for the Liverpool Range Wind Farm project. The objective of the VPA is to assist with funding for community enhancement and road maintenance projects in the area surrounding the Project site.

A development contribution of \$3,000 (increased by CPI) per installed turbine per year (or a minimum of \$100,000) will be distributed to both Warrumbungle and Upper Hunter councils (77% for a Community Enhancement Fund and 23% for a Road Maintenance Fund).

### Benefit Sharing Plan

In addition to the VPA, Tilt Renewables is looking at other initiatives and contributions that would provide support for the local community as a result of the development, with a particular focus on social inclusion, the arts, education, energy, the environment and health.

We are all looking forward to discussing the Project and associated community benefit opportunities over the coming months. In the meantime, we welcome your ideas and invite you to contact us by email: [liverpoolrangewindfarm@tiltrenewables.com](mailto:liverpoolrangewindfarm@tiltrenewables.com) or on 1800 WE TILT (938 458).



### GOODS AND SERVICES REGISTER

To register interest in providing goods or services for the Project, please visit [www.liverpoolrangewindfarm.com.au](http://www.liverpoolrangewindfarm.com.au) and complete the linked form under the Employment section.



### SIGN UP & STAY INFORMED

If you haven't already, please subscribe to our newsletter to ensure you receive all Project updates and information. We understand that not everyone uses email, so we will be working with local businesses to host Project information packs such as the newsletter, fact sheets and maps. Subscribe to receive the newsletter by email or post, by contacting us at: [liverpoolrangewindfarm@tiltrenewables.com](mailto:liverpoolrangewindfarm@tiltrenewables.com)

## GET IN TOUCH

If you have any queries about the project, the benefit sharing program or possible business and employment opportunities, please do not hesitate to contact us.

**Web:** [www.liverpoolrangewindfarm.com.au](http://www.liverpoolrangewindfarm.com.au)

**Email:** [liverpoolrangewindfarm@tiltrenewables.com](mailto:liverpoolrangewindfarm@tiltrenewables.com) | **Phone:** 1800 WE TILT (938 458)

**Postal Address:** PO Box 16080 Collins St West, Melbourne Vic 8007