

Liverpool Range Wind Farm

Newsletter
Edition

9

September
2022

The Liverpool Range Wind Farm project has reached an important milestone – the Modification Application will be on public exhibition from 20 September for 28 days. Submissions can be lodged with the NSW Department of Planning and Environment (DPE) until 17 October 2022.

A lot of progress has been made on refining the proposed modifications to the Approved Project since drop-in consultation sessions in late-October 2021. We thank everyone who has spoken with us in-person, over phone or email, providing valuable feedback and input on the Project.

We are proposing to increase the renewable energy the Project can generate by using taller turbines while reducing the number required. The Modification Application contains information on how these proposed changes to the Project would affect the environment and nearby residents and how this can be managed.

With more clean, renewable energy powering the state, the Project will help reduce Australia's carbon footprint, lower the cost of electricity while bringing jobs and economic development to the region and NSW.

The Modified Project would also help maintain power for the community by helping offset the upcoming closure of the Liddell Power Station with enough electricity to power approximately 670,000 homes.

To view the Project on exhibition, visit:

www.planningportal.nsw.gov.au/major-projects/projects/mod-1-turbine-and-infrastructure-changes

The community can make submissions on the Modification Application to DPE during the exhibition period.

To make a submission about any matters covered in the Modification Application please visit DPE's Major Projects Planning Portal: <https://pp.planningportal.nsw.gov.au/major-projects/have-your-say>

This newsletter includes:

- Key project changes and rationale
- Project benefits
- Benefit sharing
- Modified Project layout
- Modification Application Process
- Where to find information on the Modified Project
- How to make a submission

SIGN UP & STAY INFORMED

Please subscribe to the newsletter to ensure you receive all Project updates and information. Hover over the QR code or send us an email to subscribe. liverpoolrangewindfarm@tiltrenewables.com



Why is the Approved Project changing?

The proposed changes to the Approved Project are required to take advantage of recent improvements in wind energy technology. These advances enable significantly more renewable energy to be produced from fewer, larger wind turbines. The proposed modifications also reflect the outcomes of substantial design optimisation work and constructability assessments carried out to prepare for construction.

What are the proposed changes in the Modified Project?

The below table shows a comparison of the key changes between the Approved Project and the Modified Project, and the degree of change.

Project component	Approved Project	Modified Project	Change
Maximum number of turbines	267	220	-47
Turbine height	165 metres	Up to 250 metres	+85 metres
Operations and maintenance buildings	Up to 1	Up to 3	+2
Collector substations	Up to 4	Up to 7	+3
Connection substations	1	1	No change
Over-size/over-mass Haulage	Preferred route identified	Minor change to the use of State roads. Inclusion of specific Local roads within Muswellbrook LGA	Avoid built-up areas in Maitland and low height clearance bridge at Denman
Internal Transmission Line Length	28.19 km	43.93 km	+15.74 km
Concrete Batch Plants	Up to 4	Up to 10 – 9 within Wind Farm and 1 along External Transmission Line near Turill	+6
Construction Compounds and Laydown Areas	6	Up to 10 – 9 within Wind Farm and 1 along External Transmission Line near Turill	+4
Permanent Met Masts	Up to 10 at hub height	Up to 14 at hub height	+4
Development Corridor	12,391 ha	12,602 ha	+211 ha

Central-West Orana REZ - EnergyCo information sessions

EnergyCo will be holding community information sessions in September so you can find out more about the refined study corridor for the REZ transmission project.

The sessions are an opportunity to meet the project team, ask questions and provide feedback. Representatives from Tilt Renewables will also be attending.

Wednesday 21 September, 10am - 12pm and 3pm - 5pm
Coolah Youth and Community Centre, 10-12 Binnia Street, Coolah

Please go to the EnergyCo website for further information: www.energyco.nsw.gov.au

What are the benefits for the environment?

At full build, the Modified Project could generate approximately 1,300 MW of clean, renewable energy, enough power for around 660,000 homes. That's enough energy for all the homes in Newcastle and the Central Coast.

The below table shows the Modified Project would avoid approximately 2.9 million tonnes of greenhouse gas emissions entering the atmosphere every year, which is equivalent to taking approximately 933,000 cars off the road.

All construction emissions would be offset within the first year of operation.

Project component	Approved Project	Modified Project	Change
Indicative generation capacity MW	Approx. 962 MW (assumed 3.6 MW turbine)	Approx. 1,320 MW (assumed 6 MW turbine)	+ 358 MW (37% increase)
GWh per year	Approximately 2,615 GWh	Approximately 3,630 GWh	Increase of approximately 1,015 GWh per year.
Average households powered per year	Approximately 477,000 households	Approximately 662,000 households	Increase of approximately 185,000 households
Greenhouse gas benefits	Approximately 2.1 million tonnes of CO ² savings per year	Approximately 2.9 million tonnes of CO ² savings per year	Increase of approximately 800,000 tonnes of CO ² savings per year
Equivalent number of cars taken off the road per year	Approximately 672,000 cars per year	Approximately 933,000 cars per year	Increase of approximately 261,000 cars per year

Access detailed information about the Modified Project by scanning this QR code.



What are the benefits for the community?

Tilt Renewables is committed to bringing jobs and investment to the region while realising the social and environmental benefits of the Project. As a proudly Australian-owned business, we will work with our host landowners, project neighbours and the community to support social and economic development of the region.

The Modified Project is anticipated to generate:

- Around 800 direct jobs during construction
- Around 47 ongoing operational jobs
- Support for local businesses, creating jobs by buying local goods and services such as construction contractors, accommodation and hospitality

We are committed to investigating opportunities to work with First Nations businesses through construction and operation as well as build industry skills through employment and training programs.

The Project would upgrade impacted local and regional roads during construction benefiting all road users. For example, the Project is seeking to reduce the impact of construction on the community by staging road upgrades in parallel with the commencement of construction on site. This would reduce the duration of construction and associated impacts for road users. We would also create additional fire breaks with improved access roads for firefighting.

The Modified Project will help prevent forecast energy shortfalls and manage rising energy costs to benefit energy consumers as coal fired power stations are retired in coming years.

Benefit Sharing Plan

We work hard to make a positive difference in the communities where we operate to see that they benefit directly from our projects. A Benefit Sharing Plan is being prepared for the Project to:

- Ensure that the immediate communities directly benefit from the presence of the Project
- Contribute towards broader public benefits and economic development that address the needs of the region throughout the lifecycle of the Project
- Build on strategic opportunities to drive local innovation
- Create a legacy beyond the immediate benefits of the Project

As part of the Benefit Sharing Plan, our Voluntary Planning Agreement (VPA) with Warrumbungle and Upper Hunter Shire Councils will make an annual contribution of \$3,000 per installed turbine (minimum of \$100,000) to the host councils. These funds will be used for a Community Enhancement Fund and a Road Maintenance Fund. These contributions would begin once turbines capable of generating electricity have been installed.

A fund committee made up of independent community members from both councils and council representatives will be established prior to the commencement of construction. All grant applications will need to demonstrate the nature of the public purpose likely to accrue to the community within 20 km of a turbine or 5 km of a new powerline.



GOODS AND SERVICES REGISTER

To register interest in providing goods or services for the Project, please visit www.liverpoolrangewindfarm.com.au and complete the linked form under the Employment section.

Increased benefit sharing contributions under the Modified Project

As part of the Modified Project, should all 220 turbines be constructed, we are now committing to spend approximately \$1.2 million per year on initiatives developed in collaboration with the community during construction and for the first five years of operations. Furthermore, should all 220 turbines be constructed, the Modified Project would then commit to spending \$800,000 per year (VPA contributions) for the rest of the life of the Project. If the Project is staged, so will the Benefit Sharing Plan.

We will develop tailored local, regional and educational programs to address the objectives of the Benefit Sharing Plan as well as contributions through any Renewable Energy Zone access schemes. For example, the Project is investigating a regenerative farming program to identify the interest in establishing a carbon farming cooperative in the immediate region. We are consulting with community groups to understand priority community driven projects to improve social cohesion, health and wellbeing, education and tourism.

Are you a landholder with a vacant house?



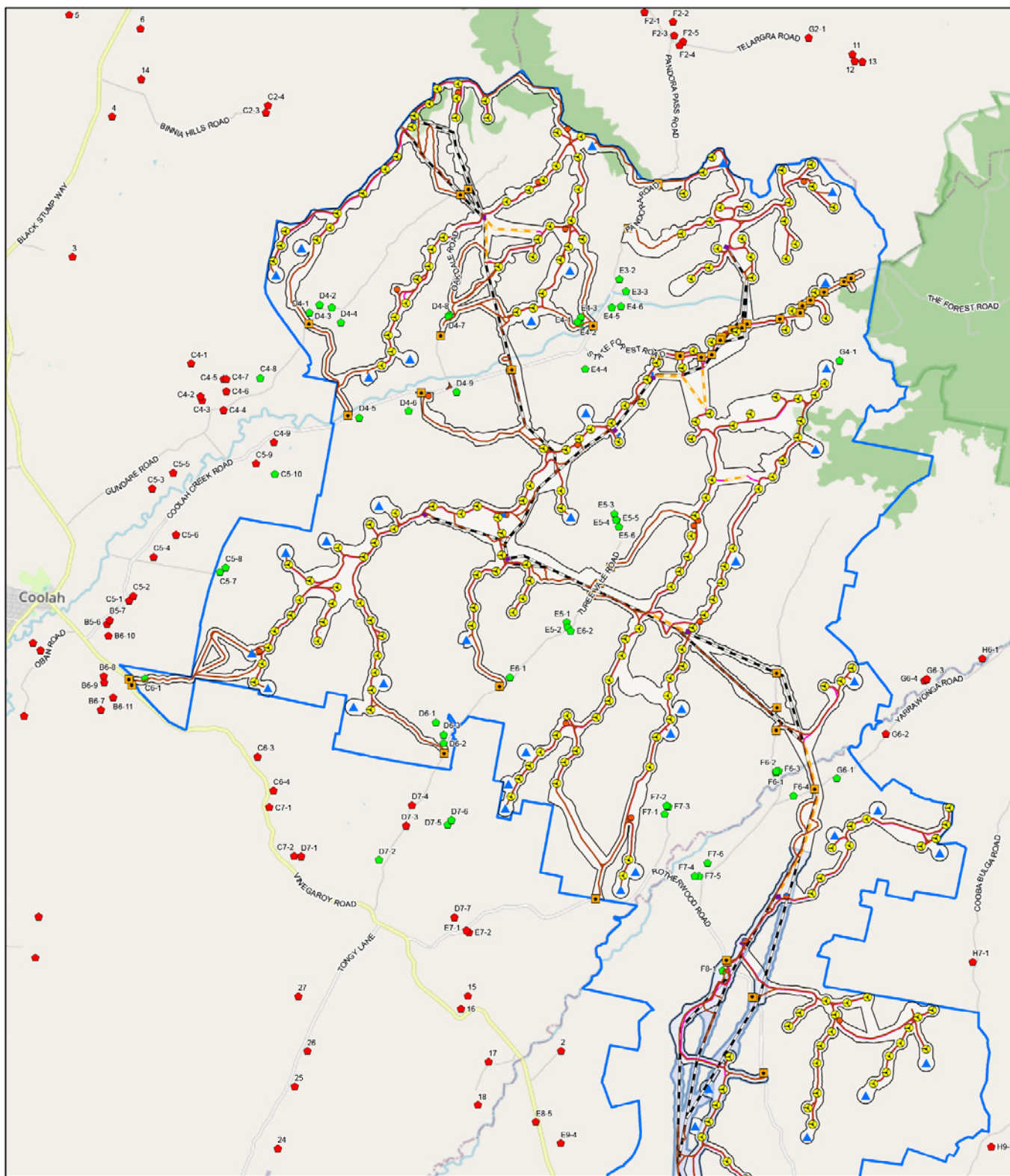
We want to hear from you if you have accommodation that could be registered on our accommodation directory for the region. We are hoping to build out a comprehensive view of what's currently available as well as what could be available.

We encourage you to think outside the box!

Get in touch by emailing liverpoolrangewindfarm@tilt renewables.com or on 1800 WE TILT (938 458).



Liverpool Range Wind Farm Modified Project Layout



Legend

- Modified Site Boundary
- Modified Development Corridor - Wind Farm
- Modified Development Corridor - External Transmission Line
- Indicative Turbine Layout
- Potential Permanent Met Mast Location
- Site Access Points
- Potential Construction Compound, Laydown Area, Batch Plant Location
- Access Track
- Underground Retiulation Cabling (Indicative 33 kv)
- Potential Overhead Cabling (Indicative 33 kv)
- Transmission Line (Indicative 330 kv)
- Transgrid Transmission Line (330 kv)
- Potential Transgrid Upgrade Works
- Potential O&M Facility Location
- Potential Substation Location

Residences

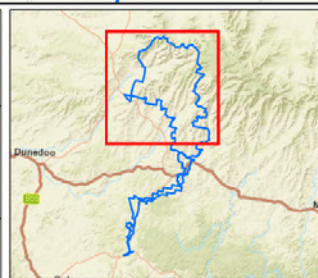
- Associated
- Non-Associated

Note1. All optional infrastructure locations are shown.
 Note2. All infrastructure locations are indicative only.
 Note3. The Site Boundary is based on publicly available cadastral data and during detailed design will be updated for the actual property boundaries and road reserves.

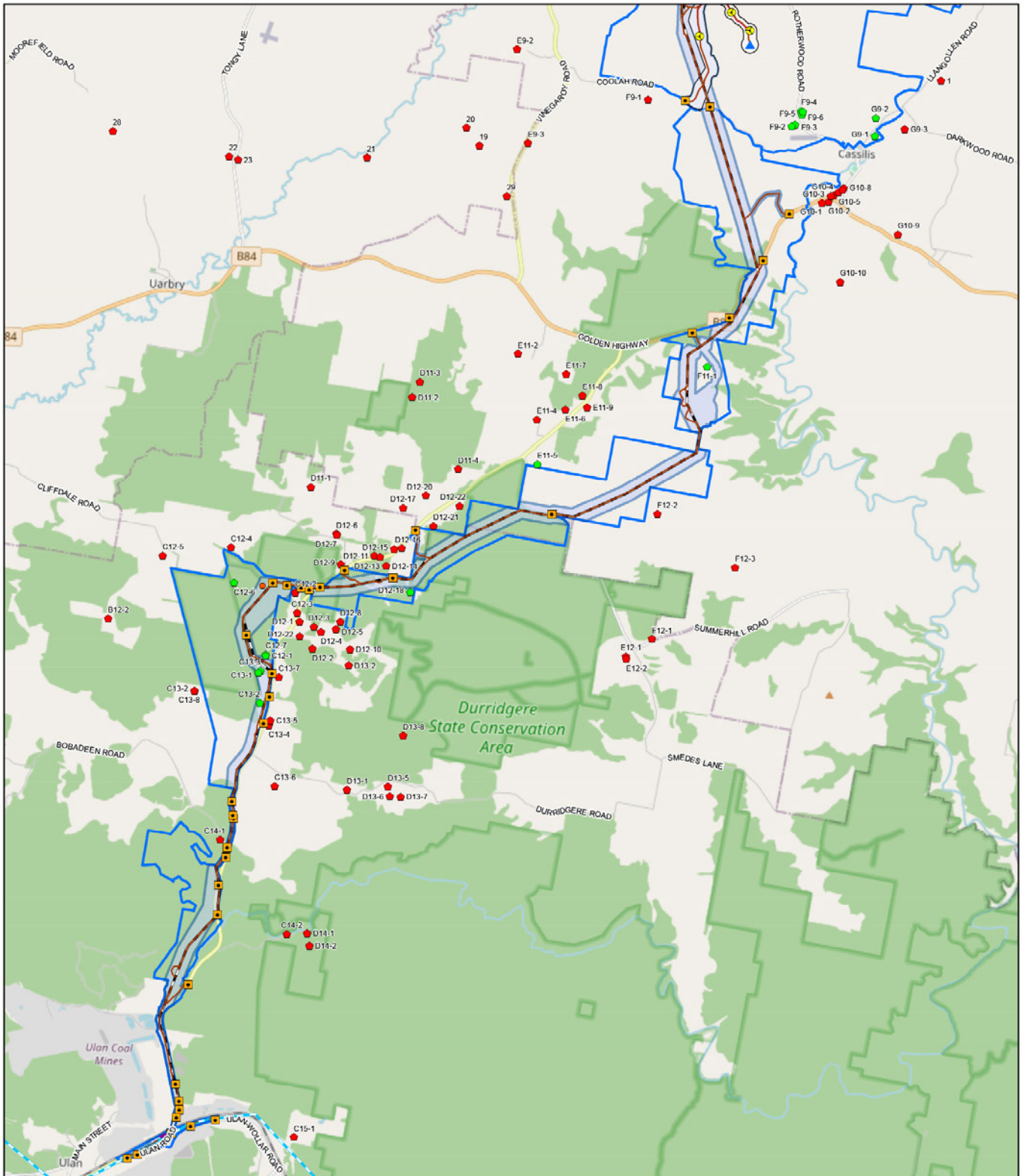
Date: 05/07/2022
Version: K

0 1 2 3 4
Kilometres

GDA 1994 MGA Zone 55
1:110,000



Liverpool Range Wind Farm Modified Project Layout



Legend


- Modified Site Boundary
- Modified Development Corridor - Wind Farm
- Modified Development Corridor - External Transmission Line
- Indicative Turbine Layout
- ▲ Potential Permanent Met Mast Location
- Site Access Points
- Potential Construction Compound, Laydown Area, Batch Plant Location
- Access Track
- Underground Retensioning Cabling (Indicative 33 kV)
- Potential Overhead Cabling (Indicative 33 kV)
- Transmission Line (Indicative 330 kV)
- Transgrid Transmission Line (330 kV)
- Potential Transgrid Upgrade Works
- Potential O&M Facility Location
- Potential Substation Location

Residences

- Associated
- Non-Associated

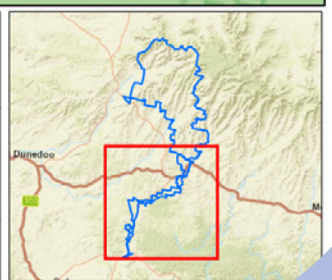
Note1. All optional infrastructure locations are shown.
Note2. All infrastructure locations are indicative only.
Note3. The Site Boundary is based on publicly available cadastral data and during detailed design will be updated for the actual property boundaries and road reserves.

Date: 05/07/2022
Version: K



0 1 2 3 4
Kilometres

GDA 1994 MGA Zone 55
1:110,000



Modification Application Process

Below is an outline of the process that the Modification Application assessment and determination process:



Public exhibition is a DPE engagement process. They will be assessing submissions relating to the modifications to the Approved Project.

Should you have any concerns about the Project, we encourage you to get in touch with us so we can understand the concern and try and resolve any issues. Similarly, if you are supportive of or against the Project, we recommend you make a submission so we can address it in the Response to Submissions (RTS) report. Your feedback will help inform the final modifications to the Project.

Submissions on the Project should be made via the Major Projects Planning Portal.

Where to find information on the Modified Project

To find information about the Modified Project we have prepared hard copy and printed information material, including maps, environmental assessment fact sheets, photomontages, interactive elements and more, available at the following locations:

- Coolah: Project Shopfront, 50 Binnia Street - open Monday to Friday, 10am - 6pm, and Saturday afternoons
- Cassilis Post Office – selection of fact sheets
- Dunedoo Post Office – selection of fact sheets
- Merriwa Post Office – selection of fact sheets
- Project website: www.liverpoolrangewindfarm.com.au
- DPE’s Major Projects Planning Portal: www.planningportal.nsw.gov.au/major-projects/projects/mod-1-turbine-and-infrastructure-changes
- Warrumbungle, Upper Hunter Shire and Mid-Western council offices - hard copies of the entire Modification Application

You can also sign up to receive updates on the progress of the Modification Application on DPE’s Major Projects Planning Portal by scanning this QR code or by visiting: www.planningportal.nsw.gov.au/major-projects/projects/mod-1-turbine-and-infrastructure-changes



GET IN TOUCH

If you have any queries about the Project, the benefit sharing program or possible business and employment opportunities, please do not hesitate to contact us.

Web: www.liverpoolrangewindfarm.com.au

Email: liverpoolrangewindfarm@tiltrenewables.com | **Phone:** 1800 WE TILT (938 458)

Postal Address: PO Box 16080 Collins St West, Melbourne Vic 8007