

Liverpool Range

WIND FARM

The Liverpool Range Wind Farm will help reduce Australia's carbon footprint by approximately 2.5 million tonnes every year, while supplying enough power for up to 570,000 homes across NSW. With more clean, renewable energy powering the state, the Project will contribute towards the goal of driving down the cost of electricity, and will bring jobs and economic development to the region.

This newsletter covers:

- Modification Application Amendment Submissions Report
- EPBC Referral – Exhibition of Public Environment Report
- Field Update
- Community Update
- Coolah Shopfront

FIELD UPDATE

What's happening on site?

The start of 2024 was jam-packed for the Liverpool Range Wind Farm (LRWF) Project team with site investigations and surveys continuing. We have been undertaking ongoing groundwater investigations, have completed a site tour for Project engineers and undertook topographical surveys of the local roads and cadastral boundaries.

The LRWF Community Consultative Committee (CCC) meeting was also held on 14 March at the Coolah Shopfront. Minutes from these meetings are available online under the Community section of our website. To access the Minutes, head to <https://www.tiltrenewables.com/assets-and-projects/liverpool-range-wind-farm/liverpool-range-wind-farm-community/>. Scroll down until you reach the Liverpool Range Wind Farm CCC Minutes as downloadable PDFs.

Sign up and stay informed

Hover over the QR code to subscribe to receive future newsletters, or email us and we'll add you to the list:

liverpoolrangewindfarm@tiltrenewables.com



Modification Application Amendment Submissions Report (TWA Facility) – available online

Tilt Renewables is progressing the application to modify the Development Consent for the LRWF project.

The proposed amendment to the Modification Application to include a Temporary Workforce Accommodation (TWA) Facility within the LRWF site boundary, approximately 3 km east of Coolah, was placed on public exhibition by the Department of Planning, Housing and Infrastructure (DPHI) between 31 January – 13 February 2024. Submissions on this amendment were received from the public and government agencies and the Submissions Report was then prepared to respond to the key issues raised.

The Submissions Report is now available online to download and view [here](#).

Appendices to the Submissions Report are also available. To access the appendices, go to the LRWF NSW Major Projects Portal page [here](#) and make sure to click on 'Response to Submissions' and scroll down to find the appendices under 'Submissions Report – TWA'.

DPHI will now review the documentation and make a determination on the Modification Application. We will let you know when DPHI has made a determination.

You can still find copies of up to date project information, including fact sheets, maps, project visualisations and the [Modification Application](#) at the Coolah Shopfront (50 Binnia Street, Coolah), and on our website.

Use the QR code or URL to access the **Submissions Report** – TWA, or head to this link: www.planningportal.nsw.gov.au/major-projects and type in the project name into the search. Under 'Response to Submissions', scroll to 'Submissions Report - TWA'.



EPBC Referral – Exhibition of Public Environment Report

We are seeking Commonwealth approval under the Environment Protection and Biodiversity Conservation (EPBC) Act 1999.

The draft PER will be on public exhibition and open for public comment from **22 May 2024** to **19 June 2024**.

A copy of the draft PER and details about how to provide feedback are available on our website via the Project Approvals and Applications page, which you can view here: www.tiltrenewables.com/assets-and-projects/liverpool-range-wind-farm/liverpool-range-wind-farm-project-approvals-and-applications/

A copy of the draft PER and details about how to provide feedback are available on our website via the **Project Approvals and Applications page**. You can also hover over the QR code below to access the Project Approvals and Applications page.



COMMUNITY UPDATE

Country Education Foundation's Boot Bash

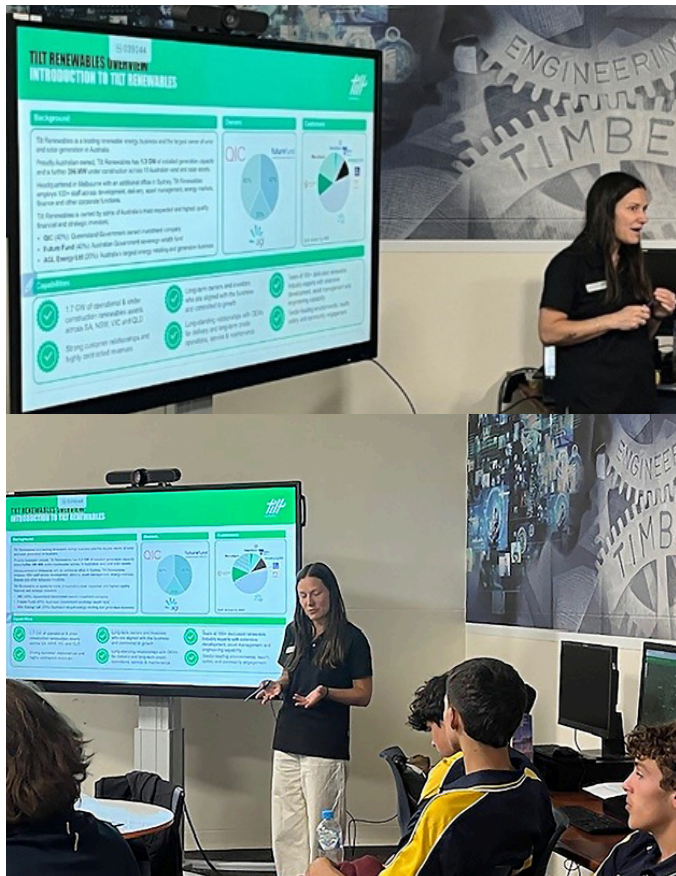
The Boot Bash is a Country Education Foundation (CEF) initiative aimed at eliminating the post-school education gap that exists between regional and metropolitan youth.

At our Rye Park Wind Farm site, just north of Yass, NSW, our delivery partner Vestas held a BBQ lunch as part of a Boot Bash initiative. Workers donated a gold coin and donned their best boots in honour of the youth experiencing financial barriers to education and jobs. A total of \$1,000 was raised and has been split across the Coolah, Merriwa and Boorowa CEFs.

Coolah Rugby

Congratulations to both Coolah League and Coolah Union! On Saturday, 20 March 2024, Coolah League won their first trophy in 60 years at the 2024 Christie and Hood Castlereagh League knockout competition at Bowen Oval, defeating Brandie. The Coolah Roos Rugby Union also won on the same weekend. More recently, congratulations to Coolah League Tag aka the Coolah Flyers, for their win 64-nil against the Coonabarabran Unicorns.

What we've been up to...



Renewable Energy Industry Forum at Wellington High School

We are privileged to be actively involved in the education of the next generation. Members of the LRWF Project team made a trip out to Wellington High School in March to attend the Renewable Energy Industry Forum organised by Training Services NSW.

We were among five organisations to present on the day and ran 30-minute interactive sessions with five groups of Year 10 students from five different schools. Our sessions started with a quick presentation on Tilt Renewables, followed by a deep dive quiz into the LRWF Project and the Central-West Orana Renewable Energy Zone (CWO REZ). The students answered a number of quiz questions which involved accessing our [LRWF Interactive Map](#) and measuring distances in relation to the LRWF Project.

Other News

Free TAFE NSW Courses

TAFE NSW is currently offering **free** microskills courses. The two courses listed below support workforce development in the renewable energy industry:

- The Institute of Applied Technology (IAT) – Construction at Kingswood has a focus on Project Management, Leadership, and Digital Construction Skills: <https://store.training.tafensw.edu.au/product-category/iat/iat-construction/>
- The IAT – Digital at Meadowbank focuses on the in-demand areas of Big Data, Cyber Security, Cloud Computing, Software Development, and Artificial Intelligence: <https://store.training.tafensw.edu.au/product-category/iat/iat-digital/>

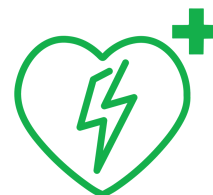
Look out for news about more microskills courses as TAFE NSW is working with the industry to develop one that prepares you to work in the renewable energy sector. You can sign up for updates from TAFE NSW by scrolling to the bottom of TAFE NSW website page: [Microskills & CPD \(Continuing Professional Development\) - TAFE NSW](#)

Coolah Shopfront

Visit us at the Coolah Shopfront: 50 Binnia Street, Coolah

Open Monday – Friday, 8.30am – 4.30pm

If the Shopfront is unattended, it means we are onsite.
Please call us and we will arrange a time to meet you there on:
1800 WE TILT (938 458).



The Coolah Shopfront now has a defibrillator that the Coolah community can use in case of a medical emergency in town.

Tilting towards the future.

We are invested in making that happen - for our investors, communities and everyone who works with us. Like our values say: we are people powered; we get things done; and, above all, we lead. Join us as we drive the transition to renewables.



Questions?

If you have any questions, get in touch by calling: 1800 WE TILT (938 458)

Email: liverpoolrangewindfarm@tiltrenewables.com | Web: www.liverpoolrangewindfarm.com.au

Postal Address: PO Box 16080 Collins St West , Melbourne Vic 8007