



This newsletter provides an update on the Rye Park Wind Farm project status, next steps and proposed timing for the project moving forward.

Project Snapshot

Turbines

109

Installed Capacity

Approximately 327MW

Project investment

\$600 million

Construction period

18-24 months

Project Status

Awaiting planning permit decision.

Environmental Benefits

It will provide enough clean energy to power 160,000 homes and save 770,000 tonnes of annual greenhouse gas emissions (equivalent of removing 160,000 cars from the roads per year).

Economic Benefits

Inject directly over \$2m per annum into the community through host landholder leases, staff salary and community fund payments.

Generate approximately \$49m of value added in the region during construction and \$3.6 million pa during operation.

Employment

250 during construction and 12-15 during 25 years of operation.

Project Update

Planning Permit

The Planning Application and Environmental Assessment for the project was lodged in April 2014 for a total of 126 turbines.

A number of amendments have been made to the project and layout as result of further community engagement and submissions received and the formal Response to Submissions (RTS) was subsequently submitted in May 2016 for a total of 109 turbines.

A total of 240 submissions were received on the RTS of which roughly 50% were in support.

The Department of Planning and Environment has since released its recommendation for approval of the project to the Planning Assessment Commission (PAC) for a final determination on the planning application. The DPE recommended conditions of approval included the deletion of up to 25 turbines on visual impact grounds. Tilt Renewables welcomes the DPEs recommendation for granting planning approval for the Rye Park Wind Farm and supports the majority of the proposed conditions of approval. However we do not support the recommendation for removal of 25 turbines from the layout based purely on visual grounds. We do not believe the deletion of these turbines are warranted on visual grounds and provided further evidence to the PAC to remove these recommendations and reinstate all the turbines in the final conditions of approval.

The PAC hosted a public meeting in March 2017 as part of its formal consideration of the planning application during which roughly 50% of community presentations were in favour of the project as well. A final decision is anticipated around July/August 2017.

Tilt Renewables remains committed to the project and once suitable planning consent is secured we will continue with the remaining actions such as connection agreements, turbine supply tendering and offtake negotiations to determine timing for bringing the project to financial close and construction. It is hopeful that construction could commence in the latter half of 2018 at the earliest if the full planning permit is secured by mid 2017.

Community Fund

Tilt Renewables have committed to a community benefit fund that will be implemented when the project becomes operational.

The fund has been agreed with Councils and will consist of \$2,500 per turbine per annum (up to \$272,500 per year) of which at least 20% of the total scheme will be allocated to educational needs.

Local Services / Employment

We are pleased to report we have had substantial local interest in providing goods and services to the project.

We encourage those who wish to submit an expression of interest to submit their details to our goods and services register on the website ryeparkwindfarm@tiltrenewables.com

All expressions of interest will be provided to the final selected contractors prior to construction.

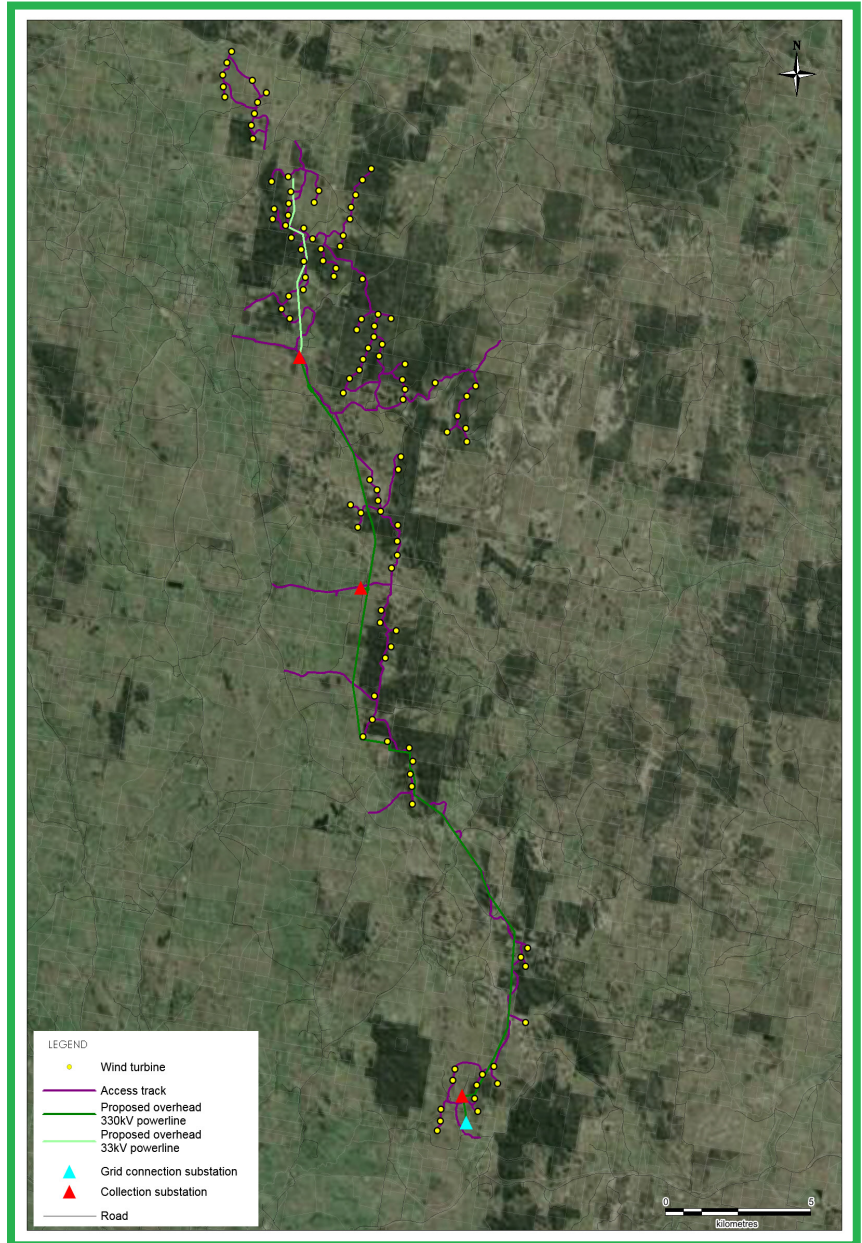
Ongoing Engagement

Tilt Renewables would like to thank all the members of the community and interested parties that provided input into the planning application process.

We will continue to keep you informed of the project status and will consult directly with the local community and interested parties as the project progresses, including further public information opportunities on the final project design and management measures prior to construction.

If you have any queries in the interim please feel free to contact a member of the project team on 1800 839 661 or email ryeparkwindfarm@tiltrenewables.com

Rye Park Wind Farm Key Project Elements Map as of October 2016



**For more information please visit
the project website**

www.ryeparkwf.com.au

or contact the Project Team on 1800 839 661

or email ryeparkwindfarm@tiltrenewables.com

Postal Address

PO Box 16080 Collins Street West

Melbourne VIC 8007

tilt
renewables

www.ryeparkwf.com.au