



This newsletter provides an update on the Waddi Wind Farm project status, next steps and proposed timing for the project moving forward.

Project Snapshot

Turbines

57

Solar Farm

40MW

Installed Capacity

Approximately 170MW

Project investment

\$500 million

Construction period

18-24 months

Project Status

Planning permits secured.

Environmental Benefits

It will provide enough clean energy to power 90,000 homes and save 450,000 tonnes of annual greenhouse gas emissions (equivalent of removing 90,000 cars from the roads per year).

Economic Benefits

Inject directly over \$1m per annum into the community through host landholder leases, staff salary and community fund payments.

Employment

150 during construction and 6-10 during 25 years of operation.

Project Update

Planning Permit

The Waddi project is located approximately 15km north-west of the township of Dandaragan and approximately 150km north of Perth, Western Australia in the mid-west region of the Wheatbelt.

The site boasts excellent wind and solar resources, along with a cost-effective transmission connection option.

Tilt Renewables will progress any outstanding minor approvals and network connection studies such that the project is positioned to execute when market conditions are supportive of an investment decision.

The planning permits for the wind and solar projects have all been secured and Tilt Renewables have been progressing additional permit requirements including the permit to remove native vegetation for the transmission line. We have also progressed the connection agreement with Western Power for the connection to the electricity network. The network connection process in Western Australia has gone through some uncertainty, following delays in the implementation of proposed reforms arising from the Electricity Market Review undertaken by the Department of Finance, and a recent change in government. Whilst working through these changes have resulted in some delays in the process, we are well underway again in progressing the connection aspects.

Once the connection aspects and remaining environmental approvals are in place we will be progressing the remaining actions such as turbine supply tendering and offtake negotiations to determine timing for bringing the project to financial close and construction. We will provide further information on timing once this has been confirmed.

Community Fund

Tilt Renewables have committed to a community benefit fund that will be implemented when the project becomes operational.

We will engage with the community before-hand on an appropriate community representative group and management structure to be put in place should the project proceed to construction.

Local Services / Employment

We are pleased to report we have had substantial local interest in providing goods and services to the project.

We encourage those who wish to submit an expression of interest to submit their details to our goods and services register on the website

www.waddiwindfarm.com.au

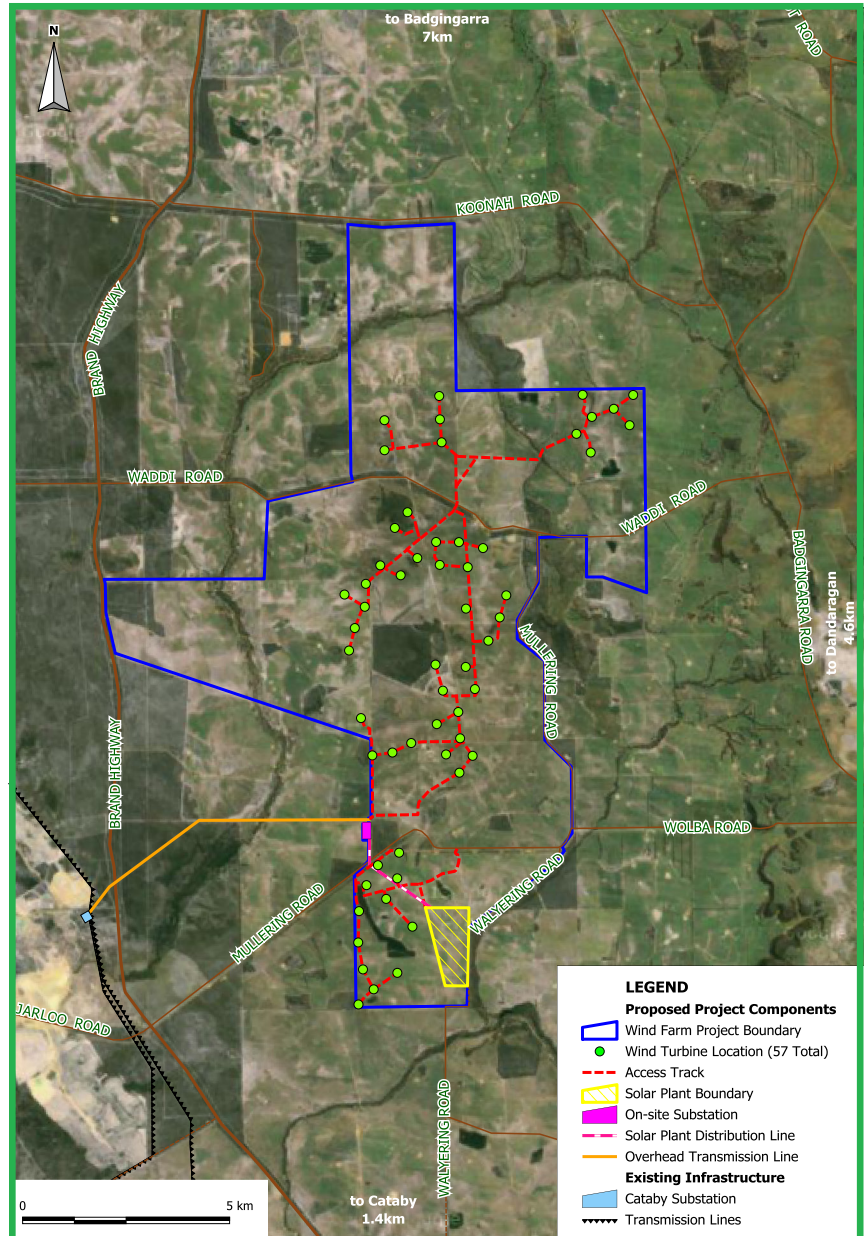
All expressions of interest will be provided to the final selected contractors prior to construction.

Ongoing Engagement

We will continue to keep you informed of the project status and will consult directly with the local community and interested parties as the project progresses, including further public information opportunities on the final project design and management measures prior to construction.

If you have any queries in the interim please feel free to contact a member of the project team on 1800 839 661 or email waddiwindfarm@tiltrenweables.com

Waddi Wind Farm Key Project Elements Map as of October 2016



**For more information please visit
the project website**

www.waddiwindfarm.com.au

or contact the Project Team on 1800 087 877

or email waddiwindfarm@tiltrenewables.com.au

Postal Address

PO Box 16080 Collins Street West

Melbourne VIC 8007

www.waddiwindfarm.com.au