



# Palmer Wind Farm

Newsletter  
Edition

2

April  
2021

**The proposed Palmer Wind Farm project is located approximately 50km east of Adelaide, near Palmer and Tungkillo, in South Australia.**

**The Project is approved for up to 103 turbines with a tip height of up to 165m, and is expected to have an installed capacity of approximately 300 MW. The turbines will be connected by underground and overhead electrical cables, with the electricity being exported into the Tungkillo Substation, located within the wind farm boundary.**

The original development application for the Project was lodged with the Mid Murray Council in February 2014 and the Project was approved by the Mid Murray Council's Development Assessment Panel in December 2015.

The approval decision was subsequently appealed at the Environment, Resources and Development Court (ERD Court). The ERD Court proceedings finished in April 2017 and on 9 March 2018 made judgment to uphold the approval, subject to additional conditions.

A Supreme Court appeal of the ERD Court decision was heard in early 2019. The Supreme Court delivered the judgment to uphold the approval of the Project in November 2019.

## Project Information

**Turbines:** Up to 103

**Installed Capacity:**  
Approximately 300MW

**Project investment:**  
\$600 million

**Construction Period:**  
Approximately 18-24 months

**Project Status:**  
Development Plan Consent obtained.

**Environmental Benefits:**  
It will provide enough clean energy to power 150,000 homes and save 720,000 tonnes of annual greenhouse gas emissions (equivalent of removing 150,000 cars from the roads per year).

**Economic Benefits:**  
Inject directly over \$2m per annum into the community through host landholder leases, staff salary and community fund payments. Generate approximately \$107m of value added in the region during construction and \$7 million p.a. during operation.

**Employment:**  
250 during construction and 12-15 during 25 years of operation.

## Project Update

We understand that since the Supreme Court judgment, there hasn't been a formal Project update to the community.

Tilt Renewables is committed to the Palmer Wind Farm project and we are constantly reviewing the Project in line with technological advances, and how we can address the challenges within the South Australian market. Since the Project was approved in 2015, wind turbine technology has improved significantly.

We have looked to progress the wind farm design and optimisation of the site in line with these technological advances and anticipate significant advancement in the wind farm design in the coming 12 months.

*We will continue to keep you informed of the Project status and will consult directly with the local community and interested parties as the Project progresses, including further public information opportunities on the final development layout and management measures.*

## PowAR Acquisition

### **Powering Australian Renewables (PowAR) and Mercury NZ have entered into a Scheme Implementation Agreement to acquire Tilt Renewables.**

Under the Scheme, PowAR will effectively acquire Tilt Renewables Australian business and Mercury (an existing shareholder) will acquire Tilt Renewables New Zealand business. Tilt Renewables considers the acquisition is very positive for the continued growth of its development pipeline and progression of its key projects towards construction, including the Palmer Wind Farm project.

Nothing much is expected to change from a day-to-day perspective other than we will have a new owner who is committed to continuing Australia's transition to a renewable energy future.

PowAR is one of Australia's largest renewable energy investors and owners and is a partnership between QIC (Queensland Investment Corporation), Future Fund and AGL:

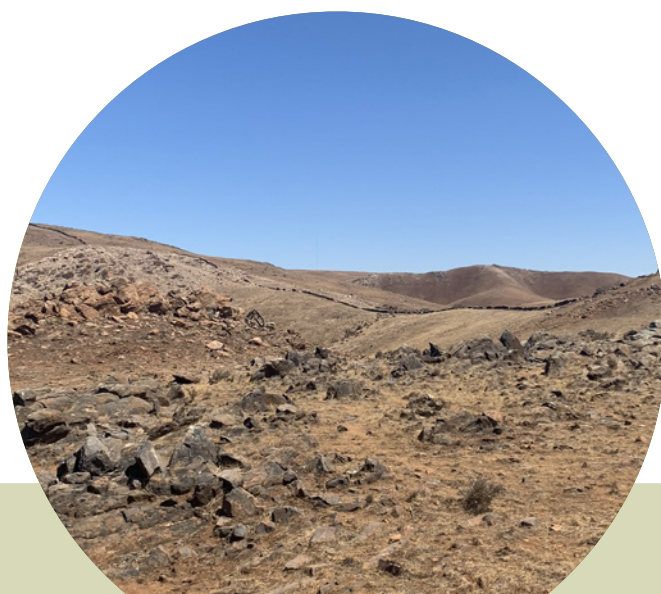
**40% QIC** = an investment company owned by the QLD Government, with around \$79B invested in a range of asset classes (infrastructure (transport, energy, utilities etc.), real estate, private capital, etc.)

**40% Future Fund** = Australian Government sovereign wealth fund that makes long term strategic investments, around \$160B fund across lots of asset classes

**20% AGL** = large vertically integrated electricity generator/retailer, rapidly acknowledging the urgency of action on climate, the transition to renewables and delivering on expectations for cleaner, reliable and affordable energy

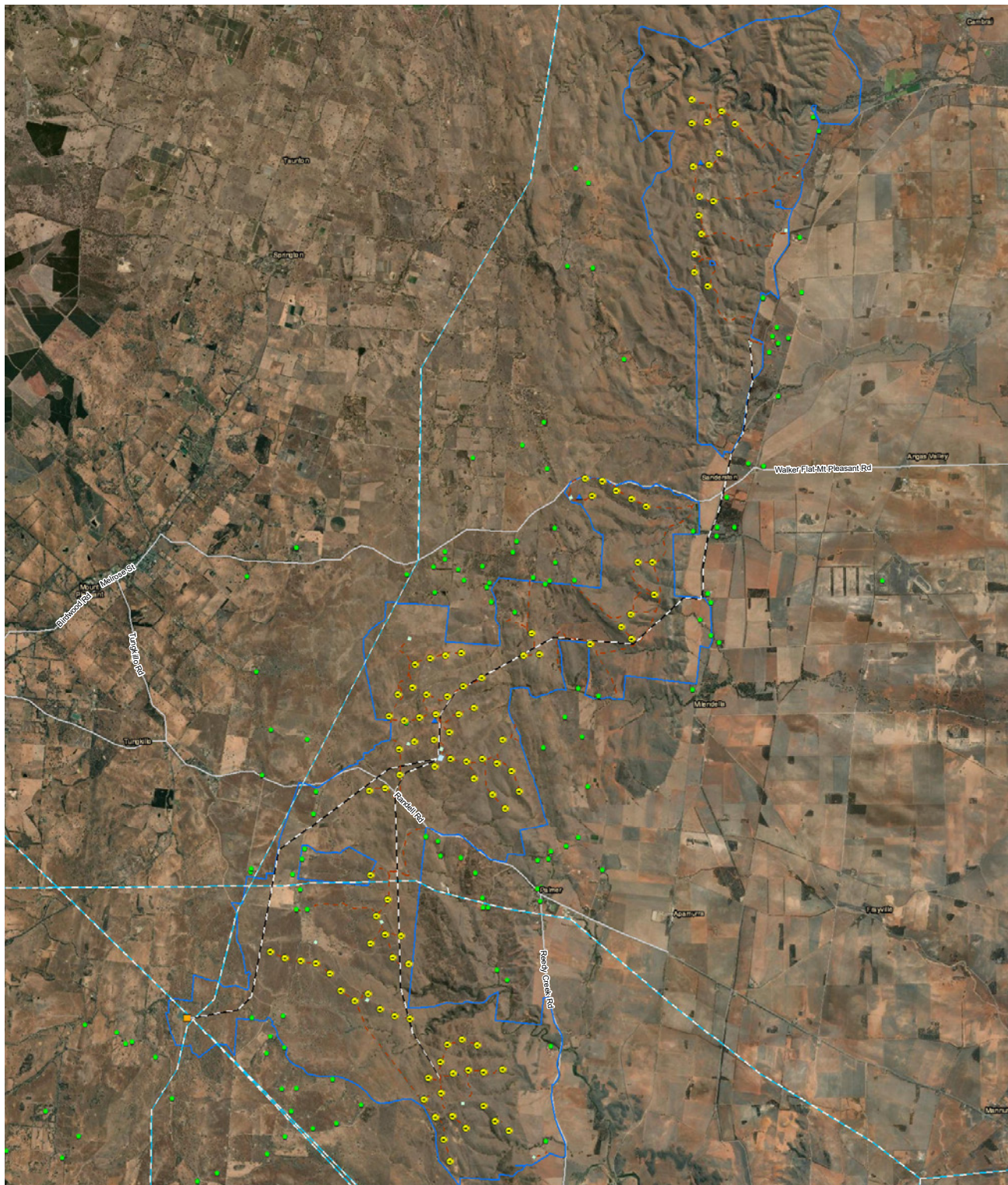
These are exciting times for the business and the proposed acquisition provides further confidence in our development portfolio and growth prospects.

Subject to shareholder and regulatory approvals by the New Zealand and Australian Governments, implementation of the Scheme should occur in August 2021.





# Site Layout



## LEGEND

- Indicative Turbine Layout
- ▲ MetMast
- Dwellings
- Tungkillio Substation
- - Access Tracks
- Proposed Transmission Line
- Existing Transmission Lines
- Temporary Construction Facilities
- Substation
- Project Boundary

## Employment

**Construction in the renewable energy sector creates hundreds of jobs on site and thousands of jobs in businesses that supply the Project, directly or indirectly, providing an economic boost for regional communities by increasing demand for local goods and services, such as accommodation, hotels, restaurants and cafes.**



The types of jobs created include:

- Domestic scale electricians
- Transport operators
- Competent machine operators
- General labourers
- Quarries
- Concrete suppliers
- Accommodation providers
- Local dairies, pubs, hotels, food service providers

We are committed to employing local people and buying local wherever possible.

To register interest in providing goods or services for any of our Projects, please complete the form linked under the Employment section of the Project's website: [www.palmerwindfarm.com.au](http://www.palmerwindfarm.com.au)

All expressions of interest will be provided to the final selected contractors prior to construction.

## Benefit Sharing

**Tilt Renewables has committed to a community benefit fund that will be implemented when the Project goes ahead with construction.**

We will engage with the community before-hand on an appropriate community representative group and management structure to be put in place.

### SIGN UP AND STAY INFORMED

**We encourage you to sign up to receive the digital newsletter that will increase in frequency as we progress with the Project. Please subscribe to receive the newsletter by email by contacting us at: [palmerwindfarm@tiltrenewables.com](mailto:palmerwindfarm@tiltrenewables.com) or on 1800 WE TILT (938 458).**

**Should you wish to receive the newsletter by post, please let us know directly.**

**[www.palmerwindfarm.com.au](http://www.palmerwindfarm.com.au)**

#### Contact us:

For more information, or to provide any feedback, please visit the project website:

[www.palmerwindfarm.com.au](http://www.palmerwindfarm.com.au)

Email: [palmerwindfarm@tiltrenewables.com](mailto:palmerwindfarm@tiltrenewables.com) | Phone: 1800 WE TILT (938 458)

