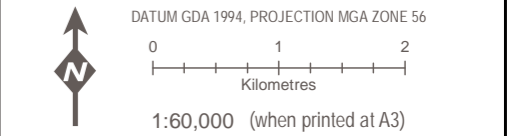
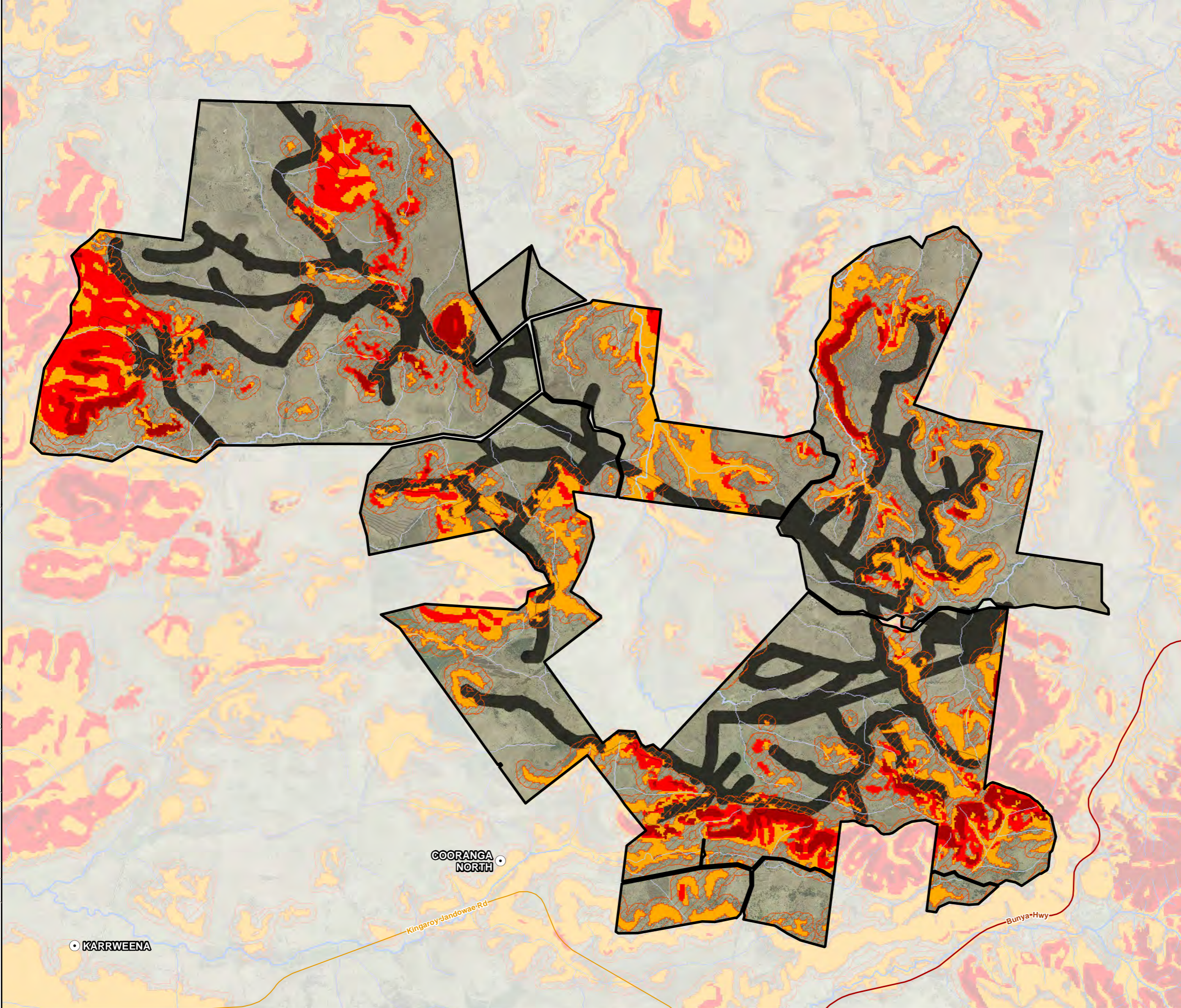
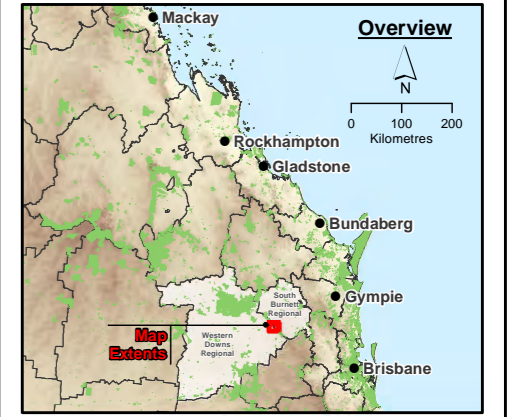


AECOM does not warrant the accuracy or completeness of information displayed in this map and any person using it does so at their own risk. AECOM shall bear no responsibility or liability for any errors, faults, defects, or omissions in the information.



- Legend**
- Project Site
  - ▭ Study Area
  - Locality
  - Highway; Freeway
  - Main Road
- Vegetation Management Watercourse**
- Stream order 1 and 2
  - Stream order 3 to 8
- Bushfire Prone Areas**
- Very High Potential Bushfire Intensity
  - High Potential Bushfire Intensity
  - Medium Potential Bushfire Intensity
  - ▭ Potential Impact Buffer



**Data Sources:**

1. Project Site, Turbine Layout © 2016 AECOM Australia Pty Ltd.
2. Sural Basin 40 cm Imagery © SISP, 2013
3. Service Road, Transmission Lines © AGL, 2014
4. Locality, Roads, Airports © StreetPro 2011
5. Cadastral Data (DCDB) © State of Queensland (Department of Natural Resources and Mines) 2016
6. Contours 10m © Department of Natural Resources and Mines, 2013.
7. Hillshade, based on the 25m DEM covering the SEQ, INRM 2005
8. Local Government Area (LGA) boundaries © Australia Bureau of Statistic (ABS), 2011.
9. Vegetation Management Watercourse and Drainage feature map (1:100 000 and 1:250 000) - version 1.4 dataset © State of Queensland (Department of Natural Resources and Mines) 2016
10. State Controlled Roads © State of Queensland (Department of Transport and Main Roads) 2016
11. State-wide Bushfire Hazard Area © State of Queensland (Public Safety Business Agency) 2014

**Disclaimer:**

StreetPro © 2011 Pitney Bowes Software Pty Ltd. All rights reserved.  
 © State of Queensland (Department of Natural Resources and Mines) 2014. Data from Commonwealth of Australia (Geoscience Australia); 2009 used in creating this dataset provided under Creative Commons Australia - Attribution licence. Updated data available at <http://dds.information.qld.gov.au/dds/>  
 © The State of Queensland (Department of Environment and Resource Management) 2011. While every care is taken to ensure the accuracy of the information Product, the Department of Environment and Resource Management makes no representations or warranties about its accuracy, reliability, completeness or suitability for any particular purpose and disclaims all responsibility and all liability (including without limitation, liability in negligence) for all expenses, losses, damages (including indirect or consequential damage) and costs which you might incur as a result of the product being inaccurate or incomplete in any way and for any reason.

**COOPERS GAP WIND FARM ENVIRONMENTAL IMPACT STATEMENT**

		<b>BUSHFIRE</b>
PROJECT #:	60489152	<b>Figure 9.1</b>
CREATED BY:	BM	
LAST MODIFIED:	BM: 5/09/2016	
VERSION:	1	