

Dundonnell Windfarm newsletter

NEWen

Edition 1, September 2011



A MESSAGE from our Australian Director

Welcome to the first edition of the Dundonnell Wind Farm newsletter. The purpose of this newsletter is to keep you, the community, informed of our proposal to develop and construct a wind farm at Dundonnell.

This is a very exciting project for us as it is the first time NewEn has dealt with a group of land holders motivated to source a wind farm for their properties. So the Dundonnell Wind Farm truly is a partnership in every sense of the word.

You are most likely aware of the recent changes in Victorian wind farm legislation. Now if we were to place a wind turbine within two kilometres of a residential dwelling that is not under agreement with the wind farm, consent from that home owner is required. This is why we have two stages of the wind farm development; stage one is hardly affected by the new legislation while stage two has a number of houses which will fall in this category.

We intend to link our permitted Salt Creek (Woorndoo) wind farm of 15 turbines with Dundonnell, in order to obtain the required economies of scale for the cost of a dedicated transmission line.

We have completed all of the relevant studies for stage one and are in the process of compiling our EPBC submission which is the first step towards an official planning permit application.

All turbines at the Dundonnell Wind Farm will be modern and efficient, each producing enough electricity to supply about 2000 households. So, in effect, both stages of the Dundonnell Wind farm have the potential to power 280,000 homes.

It is anticipated that the towers will be 80 or 90 metres high and have blades of up to 60 metres in length. At any time when one of the blades is directly vertical, the distance from the ground to the tip of the blade will be no more than 150 metres.

NewEn values its relationship with

the community and understands the importance of communicating openly and honestly with you at all times. But we are also conscious that more can be done. That is why we have a public meeting planned for your area on October 12th – there are further details on the opposite page of this newsletter.

We are a German-based, family owned company which is very small when compared to most of our industry counterparts. We have three staff members here in Australia and throughout this process you will be able to deal directly with the three members of our team; myself, our General Manager, Klaus Wiegel and our Project Manager Chris Righetti. It will be us you will speak to on the phone, see on your road and meet at our public meetings.

We understand that you may have queries about this project. So we have recently established a toll free number – 1800 122 823. This number will enable you to speak directly to one of our three team members.

Our family company is looking forward to working with you and your family throughout this planning process.



About NEWen



Svend Karstedt Managing Director

NewEn Australia is part of a German, family-owned company. The NewEn we see today started in Bremen in the 1920s as the DS Group, which diversified into renewable energy in 1997.

Just four years later, in 2003, NewEn Australia was established. In 2008 our Canadian operation opened.

As a family-owned company, NewEn has always had a personal approach to business. We fully believe in a hands on approach, where the people who oversee the company are responsible for its day-to-day operations.

It is a philosophy that works well and – together with the long family tradition – has significantly contributed to the company's success.

Like our parent company, here in Australia we believe in harvesting the wind in the most economic and ecological way possible, while respecting the heritage, supporting the environment and working with the community.

The process

The development process for a wind farm is long and involved. From the time of identifying a potential wind farm site to the date of construction, the various steps involved can often take between five and seven years. Here is a snapshot of what the planning process of a wind farm entails; in addition to landholder and community consultation, which are regularly addressed throughout the development of the wind farm project.



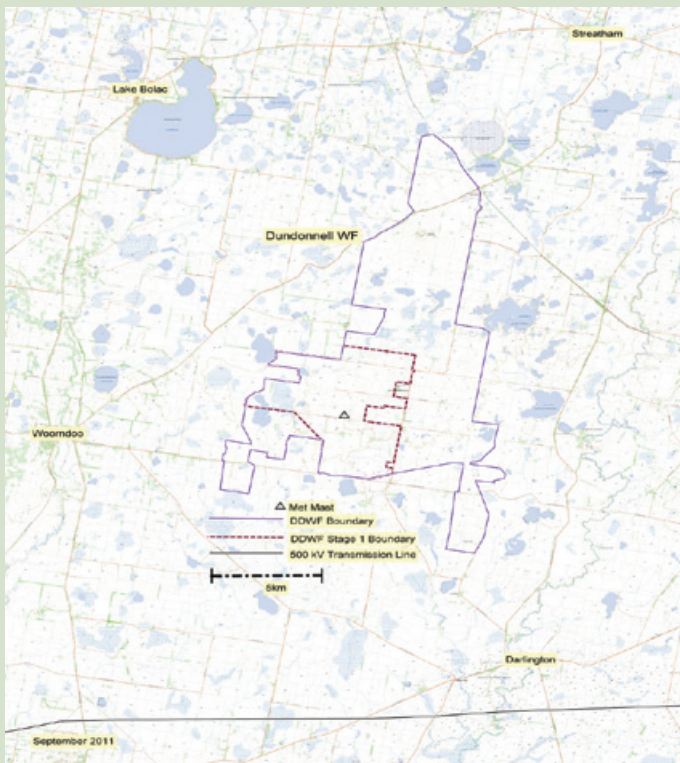
Project Manager
Chris Righetti

Process	Date
Meteorological Mast	Erected in January 2010
Initial Flora & Fauna Studies	Completed Spring 2010
Targeted Flora & Fauna Studies	Completed Spring 2010-August 2011
Bird and Bat Studies	Completed March 2011
Cultural Heritage Studies	Completed August 2011
Geotechnical Assessment	Completed August 2011
Landscape & Visual Screening Analysis	To be completed in October 2011
Key Stakeholder Engagement	Underway and ongoing
Wind Data Analysis	Ongoing
Estimated Economics	Ongoing
Lodgement of EPBC and EES referrals	Late 2011
Lodgement of Planning Permit application	Early 2012

From this point onwards, the timing of the development process becomes more uncertain. The receipt of a Planning Permit will take some time and may have numerous conditions attached.

Construction cannot start until these conditions are fulfilled and a building permit is received. Furthermore the owner/operator of the wind farm would require an electricity off take agreement to sell the energy produced by the wind farm.

Throughout this development process, NewEn will continue to communicate with you on major developments.



PUBLIC MEETING

Purpose: To provide details of the planned Dundonnell Wind Farm to interested parties

Date: Wednesday, October 12

Time: 7pm

Location: Dundonnell Hall, Dundonnell

The facts about wind energy

- Australia has some of the best wind resources in the world
- Wind energy does not produce CO₂, unlike coal or gas-fired energies
- Wind turbines operate between 15 and 19 revs per minute. With stronger winds, the revolutions do not increase

Dundonnell



Phone: 1800 122 823
Email: info@au.newen.cc

NewEn Australia Pty Ltd.
ACN: 103 702 405
ABN: 98 103 702 405

52 Collins Street, Melbourne 3000

Your Australian team: Managing Director Ernst Weyhausen, General Manager Klaus Wiegel, Project Manager Chris Righetti

NEWen