



This newsletter provides an update on the Palmer Wind Farm project status, next steps and proposed timing for the project moving forward.

## Project Snapshot

### Turbines

103

### Installed Capacity

Approximately 300MW

### Project investment

\$600 million

### Construction period

18-24 months

### Project Status

Planning permit granted in December 2015. Awaiting outcome of ERD Court appeal against the decision.

### Environmental Benefits

It will provide enough clean energy to power 150,000 homes and save 720,000 tonnes of annual greenhouse gas emissions (equivalent of removing 150,000 cars from the roads per year).

### Economic Benefits

Inject directly over \$2m per annum into the community through host landholder leases, staff salary and community fund payments.

Generate approximately \$107m of value added in the region during construction and \$7 million pa during operation.

### Employment

250 during construction and 12-15 during 25 years of operation.

## Project Update

### Planning Permit

As you may be aware we have been working through the Environment, Resources & Development (ERD) Court appeal process.

The original development application for the project was lodged with the Mid Murray Council in February 2014 and the project was approved by the Mid Murray Councils Development Assessment Panel (DAP) in December 2015. The approval decision was subsequently appealed at the Environment, Resources and Development Court. The formal ERD court proceedings commenced on 06 March 2017 and was adjourned on 05 April 2017 after 17 days.

The next steps after final closing statements are submitted by all parties is for the court to conclude their internal deliberations and to write up their assessment report. This process could take a few months and we anticipate an outcome by August 2017.

The Palmer Wind Farm is still a key priority for us and we remain confident of a positive outcome in securing the planning permit in due course. Once we have confirmation of the planning permit we can continue with the remaining actions such as connection agreements, turbine supply tendering and offtake negotiations to determine timing for bringing the project to financial close and construction. It is hopeful that construction could commence in the latter half of 2018 at the earliest.

newsletter

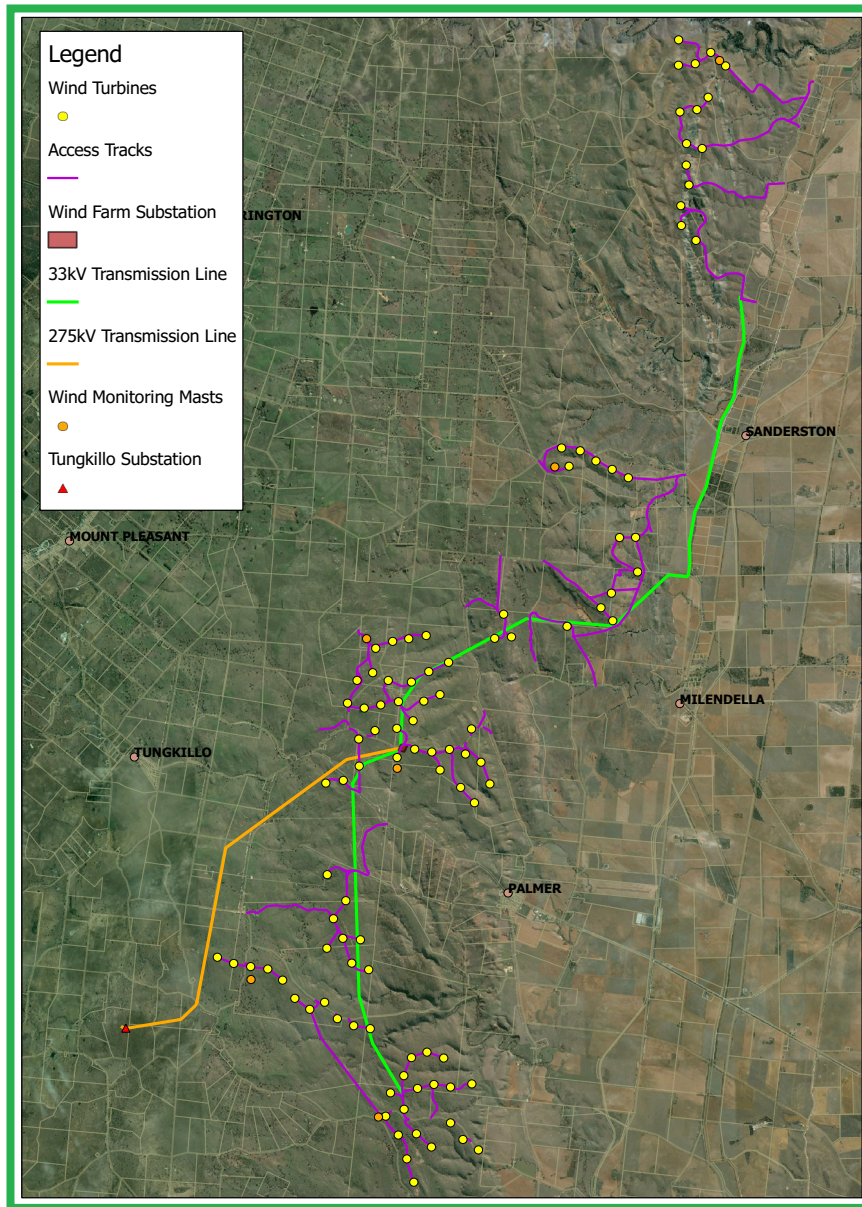
## Layout Development

### Wind Farm Layout

The DAP approval, received in December 2015, was for up to 114 wind turbines with a maximum height of 165 metres.

The number of turbines has been further reduced from 114 to 103 as a result of further refinement through the appeal process.

### Palmer Wind Farm Key Project Elements Map as of October 2016



## Community Fund

Tilt Renewables have committed to a community benefit fund that will be implemented when the project goes ahead with construction.

We will engage with the community before-hand on an appropriate community representative group and management structure to be put in place should the project proceed to construction.

## Local Services / Employment

We are pleased to report we have had substantial local interest in providing goods and services to the project.

We encourage those who wish to submit an expression of interest to submit their details to our goods and services register on the website.

[www.palmerwindfarm.com.au](http://www.palmerwindfarm.com.au)

All expressions of interest will be provided to the final selected contractors prior to construction.

## Ongoing Engagement

We will continue to keep you informed of the project status and will consult directly with the local community and interested parties as the project progresses, including further public information opportunities on the final project design and management measures prior to construction.

If you have any queries in the interim please feel free to contact a member of the project team on 1800 648 690 or email

[palmerwindfarm@tiltrenewables.com](mailto:palmerwindfarm@tiltrenewables.com)

**For more information please visit  
the project website**

[www.palmerwindfarm.com.au](http://www.palmerwindfarm.com.au)

or contact the Project Team on 1800 648 690

or email [palmerwindfarm@tiltrenewables.com](mailto:palmerwindfarm@tiltrenewables.com)

Postal Address

PO Box 16080 Collins Street West

Melbourne VIC 8007

