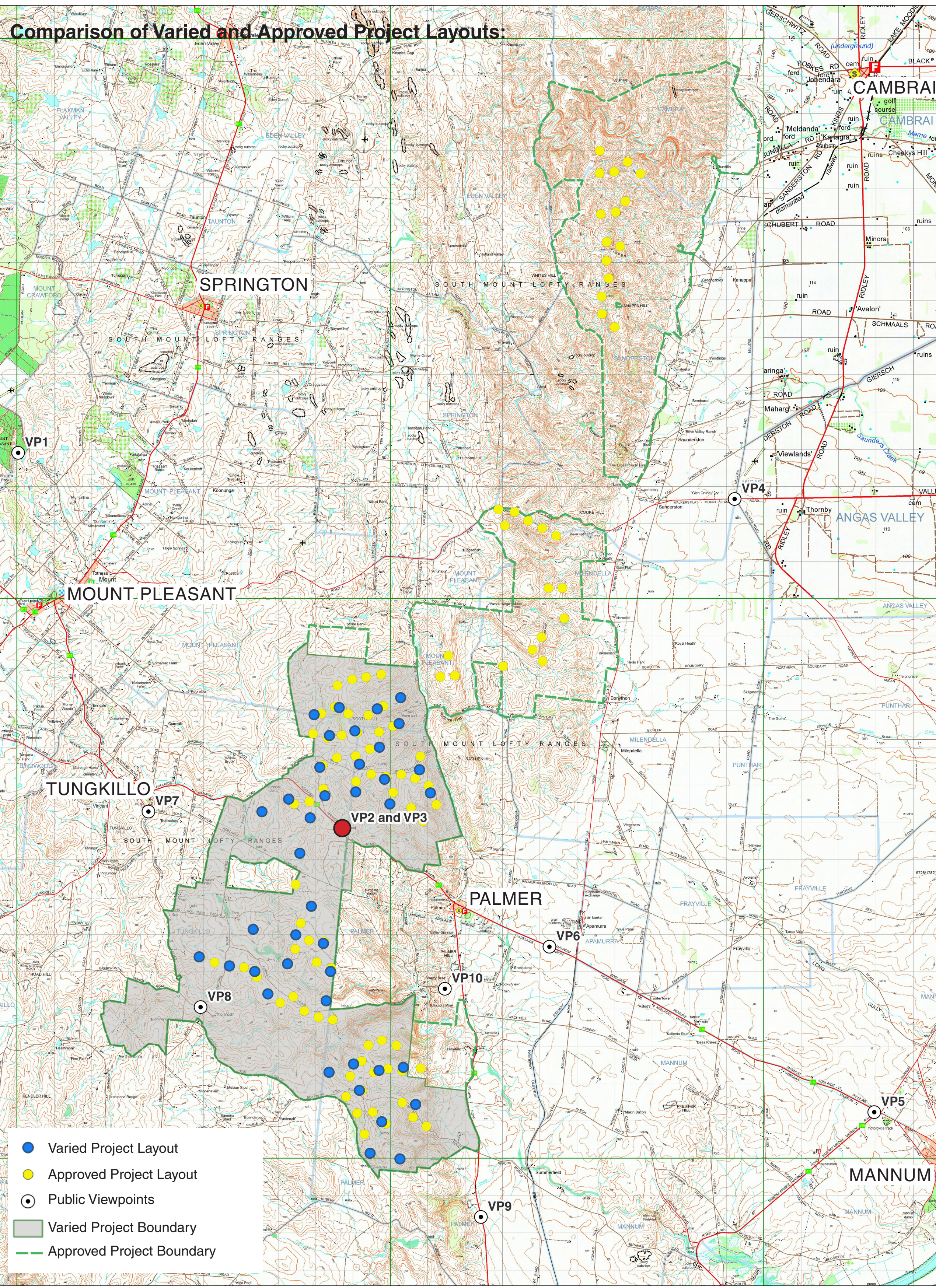


Varied Project



Approved Project







The photomontages have been developed using a best practise approach in order to provide an indication and comparison of the potential visual effects that may result from the development of the Approved and Varied Project Layouts for Palmer Wind Farm.

The photomontages represent realistic comparative imagery of the two wind farm layouts and includes vegetation, local landforms and buildings in the landscape.

Notes:

- Eastings position (MGA): 328756
- Northing position (MGA): 6143837
- Elevation of viewpoint (m): 386.8m
- Height of camera above ground: 1.57m
- Date photograph was taken: 22/09/2023
- Time of day: 10:39am
- Focal length of camera: 35mm DSLR (equivalent to 50mm analogue)
- Distance to closest turbine: 0.94km
- Bearing to closest turbine: 286°
- Horizontal field of view: 120°



VIEWPOINT 2

PALMER SCENIC

LOOKOUT (SOUTH)

