



10/09/2019

Weekly Construction Update - #32

Dundonnell Wind Farm

Arrival of wind farm substation switchroom



The Tilt Renewables team is underway with constructing the \$560 million Dundonnell Wind Farm located approximately 23 kilometres north-east of Mortlake, in the Western District of Victoria. AusNet Services are constructing 38 kilometres of 220kV transmission line and a substation which will connect the wind farm to the electricity network.

Civil progress on the wind farm included the backfilling of 2 wind turbine foundations and 3 poured. More excavations and steel fixing underway at multiple locations across the site. Civil crews continue to expand the access track network with 20.7km of track now complete. Construction of the onsite substation and the operations and maintenance facility are ongoing. Production of gravel and rock products continued at the quarry.

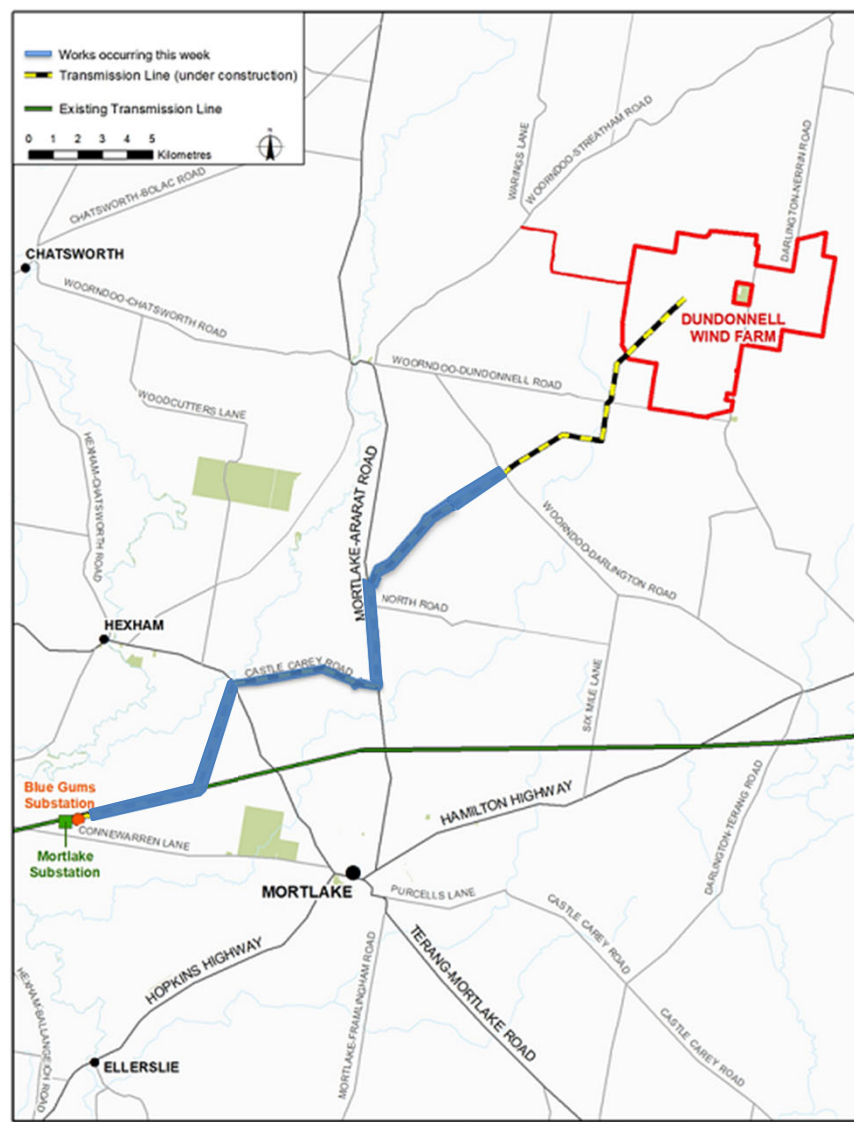
The transmission line team have now poured 87 pole foundations and 53 transmission poles have been erected. Lattice towers are being constructed to connect the Blue Gums Substation to the Mortlake Power Station terminal station - there will be crews and vehicles entering and exiting the site off Connewarren Lane over the next week.

Poles are now being erected along Mortlake-Ararat Road, whilst holes continue to be drilled in this area ready to pour their foundations. There is traffic management in place, and you may experience delays due to single lane traffic. Over the next few months there will be road closures of up to 15 minutes on Mortlake-Ararat Road.

In the Mail “Over the next few weeks, a number of key deliveries are arriving at the wind farm site. The switchroom for the onsite substation arrived on site on Monday and the second transformer will be arriving on site over the next fortnight. Two shipments of wind turbine tower sections are on route from Vietnam, the first of which is expected to arrive in Portland on the 14th of October. The tower sections will be progressively transported to site.



Poles 57 & 58 erected (height ~ 40m)



Document Path: G:\GIS\Development Sites\VC-Dundonnell\Mapworks2\DWG_254_TxConstruction\14.dwg