

Weekly Construction Update - #34

Dundonnell Wind Farm

Wind farm substation switchroom delivered



The Tilt Renewables team is underway with constructing the \$560 million Dundonnell Wind Farm located approximately 23 kilometres north-east of Mortlake, in the Western District of Victoria. AusNet Services are constructing 38 kilometres of 220kV transmission line and a substation which will connect the wind farm to the electricity network.

Civil works continue at the Wind Farm construction site, 20 turbine foundations poured with more excavations and steel fixing underway at multiple locations. Crews continue to expand the access track network with 22.9km of track now complete. Installers were in the substation with the flick of a switch commencing installation and assembly works on the substation switchroom. Construction of the onsite substation, operations and maintenance facilities are ongoing. Production of gravel and rock products continued at the quarry.

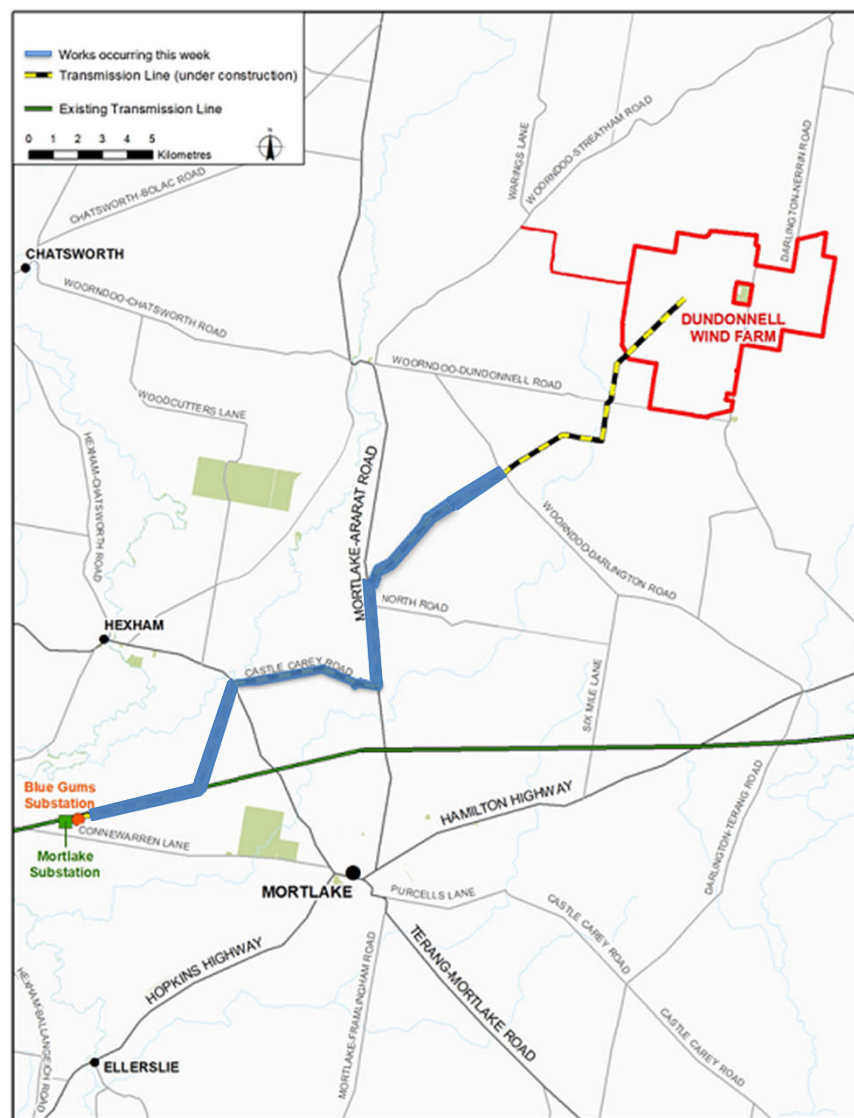
The transmission lines team have now poured 96 pole foundations and 58 transmission poles have been erected. Substation instruments and equipment are being delivered and structural supports constructed at the Blue Gums Substation and as such there will be crews and vehicles entering and exiting the site off Connewarren Lane over the next week.

Poles are now being erected along Mortlake-Ararat Road, whilst holes continue to be drilled in this area ready to pour their foundations. There is traffic management in place, and you may experience delays due to single lane traffic. Over the next few months there will be delays of up to 15 minutes on Mortlake-Ararat Road. As more sections of poles start standing upright, stringing works will follow over the coming months. The timing for this activity is weather dependent.

In the Mail “The first batch of international wind turbine tower sections are on the water and are expected to arrive in the Port of Portland by the end of the month. Locals can expect tower sections on the roads and heading up to the wind farm construction site in the coming weeks. Fabrication of the local Keppel Prince tower sections are set to commence out of their Portland factory next week ”



Structural supports and instrument install at BGS



Document Path: G:\GIS Development_Series\Map Development\Maps\working\DUW\Map_1\ConstructionUpdates.mxd