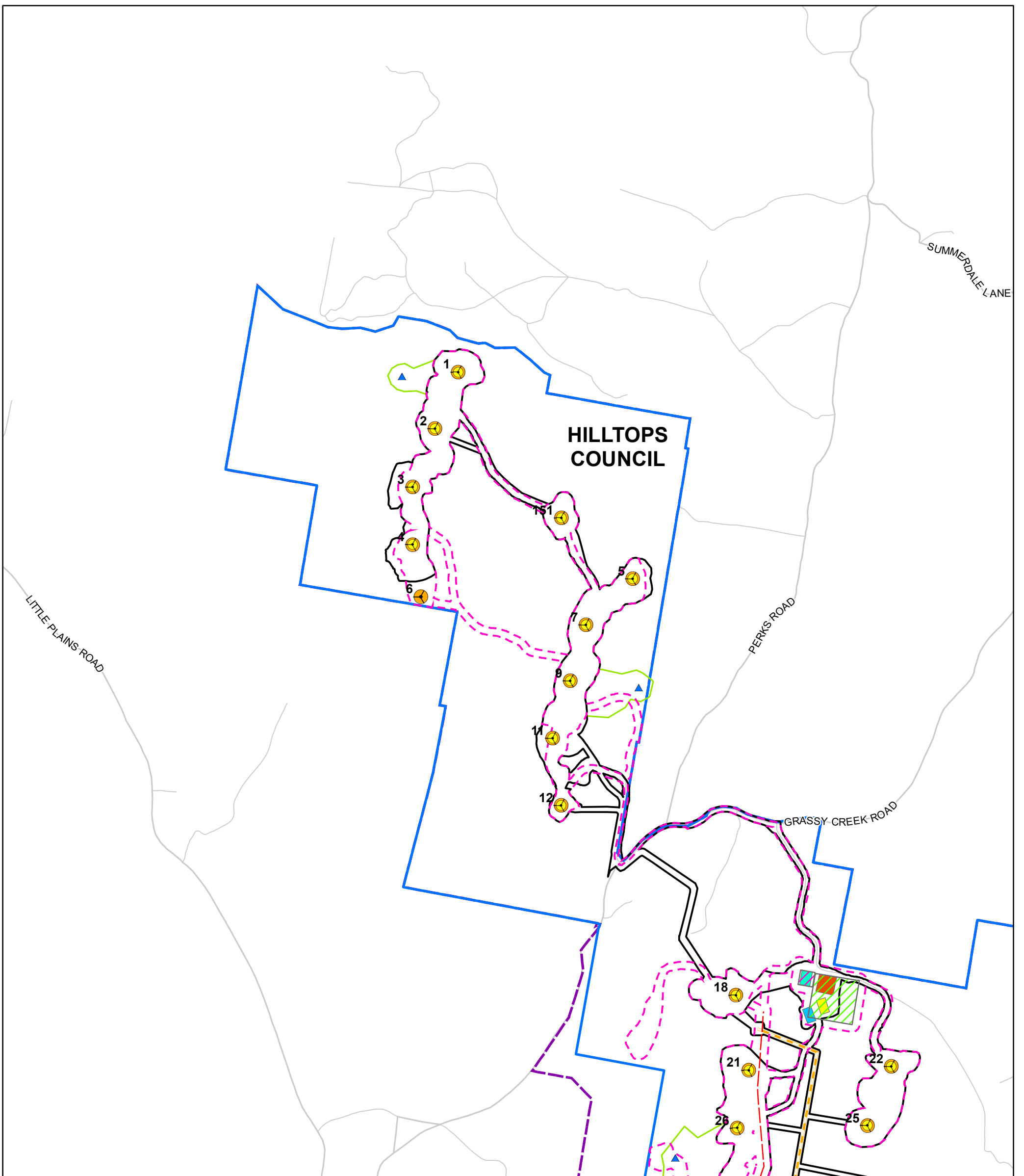




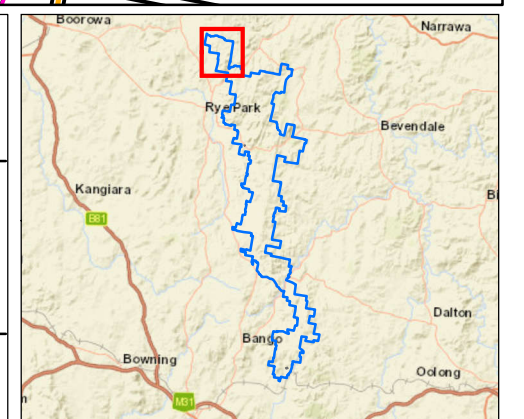
## **Appendix A: Rye Park wind farm Preliminary Documentation – Infrastructure Changes**



Modified Project		Approved Project	
Modified Indicative Turbine Layout	Approved Indicative Turbine Layout	Approved Temporary Batch Plants	Local Government Area
Turbines Removed during RTS	Approved Transmission Line (33kV and 330kV)	Approved Development Corridor	Transgrid Transmission Line (330kV)
Permanent Met Masts	Approved Collector Substations	Approved Project Boundary	
Revised Transmission Line (33kV)	Approved Connection Substation		
Revised Transmission Line (Up to 330kV)	Approved O&M Facilities		
Revised Collector Substation	Approved Temporary Construction Compounds		
Revised Connection Substation	Revised Temporary Batch Plants		
Revised O&M Facility	Revised Temporary Laydown Area		
Revised Temporary Construction Compounds	Modified Development Corridor – Wind Farm		
Revised Temporary Batch Plants	Development Corridor – Permanent Met Masts		
Revised Temporary Laydown Area	Modified Project Boundary		

Date: 10/08/2020  
Version: B

0 0.25 0.5  
Kilometres  
GDA 1994 MGA Zone 55  
1:25,000



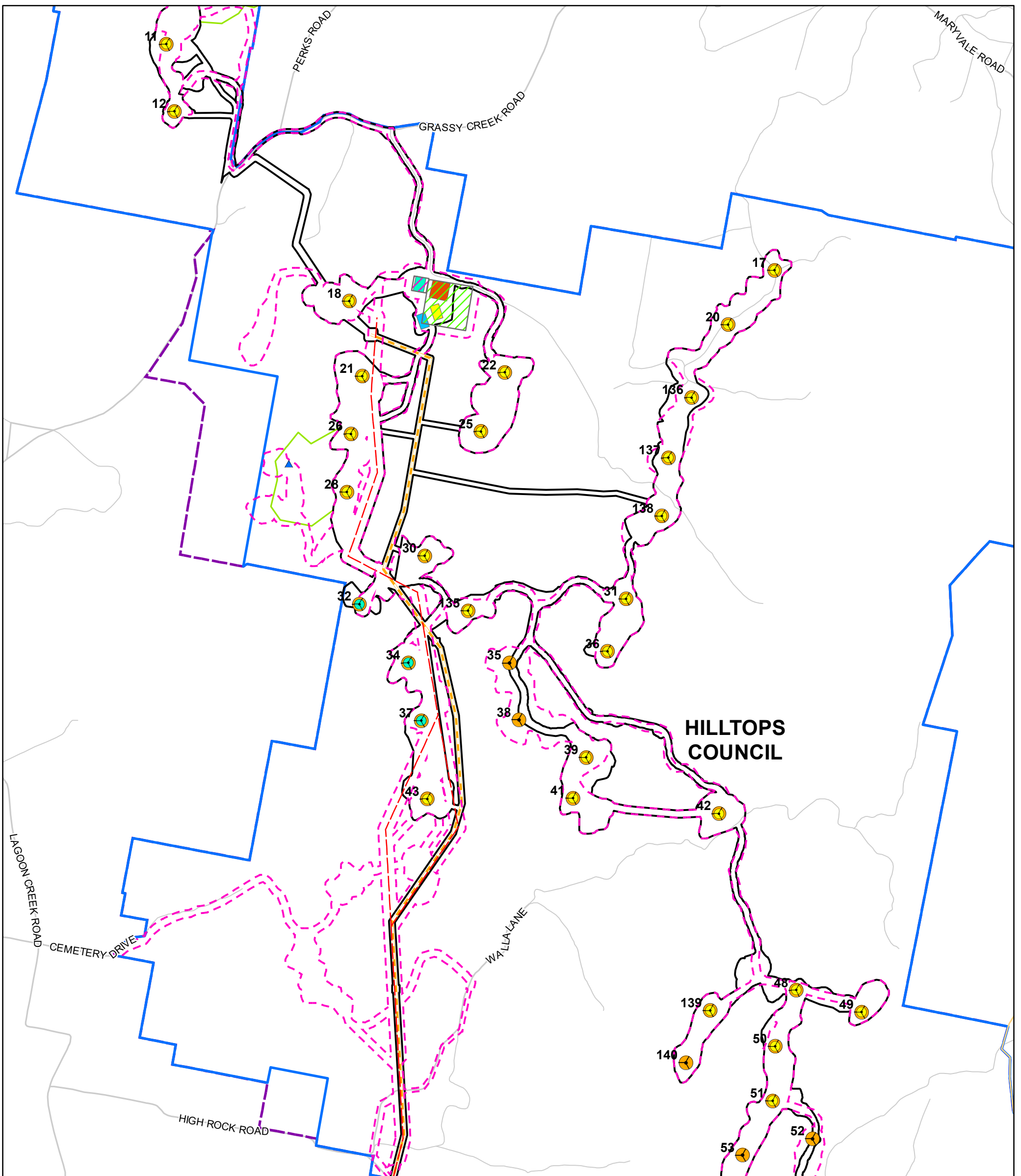
**Note 1.** The alignment of the revised access tracks and revised underground cable is based on an optimised infrastructure layout (based on the micro-siting allowance in the Development Consent). All infrastructure is indicative only.

**Note 2.** The development corridor includes allowance for the underground cabling and access tracks (in addition to the infrastructure shown).

**Note 3.** The Project Boundary is based on publicly available cadastre and during detailed design will be updated for the actual property boundaries and road reserves.

Document Path: G:\GIS\Development\_Sites\NSW\RyePark\Maps\Working\RPWF\_126B\_Infrastructure Changes\_20200810.mxd





Modified Project		Approved Project	
Modified Indicative Turbine Layout	Approved Indicative Turbine Layout	Approved Temporary Batch Plants	Local Government Area
Turbines Removed during RTS	Approved Transmission Line (33kV and 330kV)	Approved Development Corridor	Transgrid Transmission Line (330kV)
Permanent Met Masts	Approved Collector Substations	Approved Project Boundary	
Revised Transmission Line (33kV)	Approved Connection Substation		
Revised Transmission Line (Up to 330kV)	Approved O&M Facilities		
Revised Collector Substation	Approved Temporary Construction Compounds		
Revised Connection Substation	Revised Temporary Batch Plants		
Revised O&M Facility	Revised Temporary Laydown Area		
Revised Temporary Construction Compounds	Modified Development Corridor - Wind Farm		
Revised Temporary Batch Plants	Development Corridor - Permanent Met Masts		
Revised Temporary Laydown Area	Modified Project Boundary		
Modified Development Corridor - Wind Farm			
Development Corridor - Permanent Met Masts			
Modified Project Boundary			

**Note 1.** The alignment of the revised access tracks and revised underground cable is based on an optimised infrastructure layout (based on the micro-siting allowance in the Development Consent). All infrastructure is indicative only.

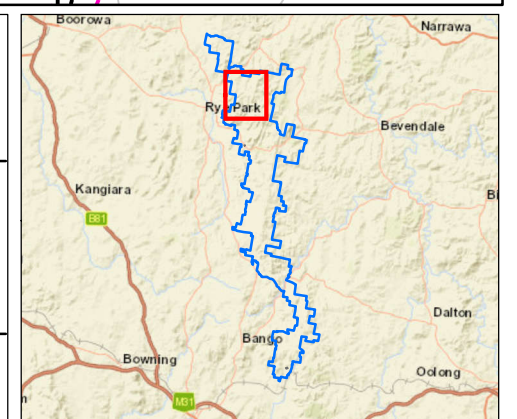
**Note 2.** The development corridor includes allowance for the underground cabling and access tracks (in addition to the infrastructure shown).

**Note 3.** The Project Boundary is based on publicly available cadastre and during detailed design will be updated for the actual property boundaries and road reserves.

Date: 10/08/2020  
Version: B

0 0.25 0.5  
Kilometres

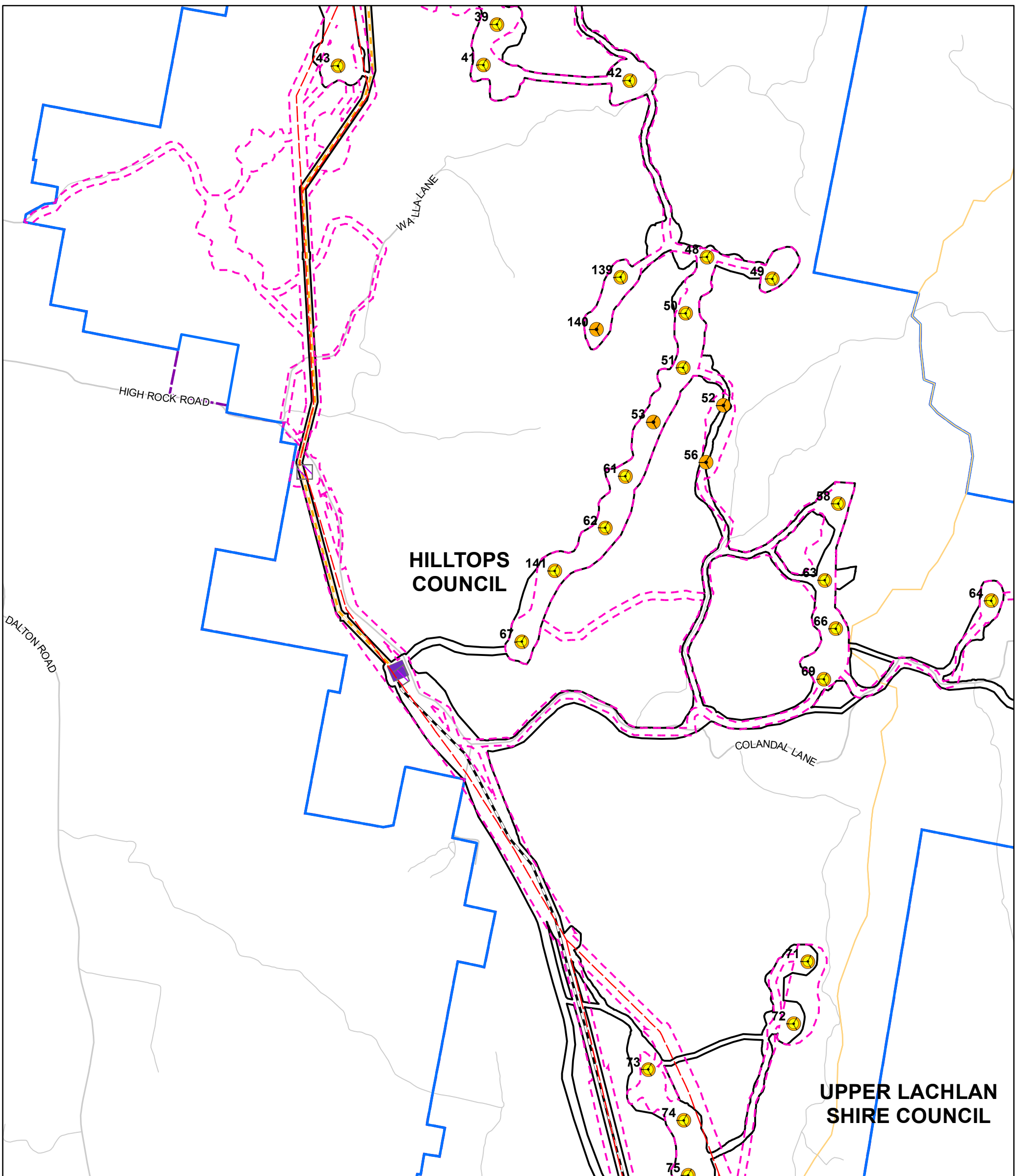
GDA 1994 MGA Zone 55  
1:25,000



Document Path: G:\GIS\Development\_Sites\NSW\RyePark\Maps\Working\RPWF\_126B\_Infrastructure Changes\_20200810.mxd

# Rye Park Wind Farm Infrastructure Changes



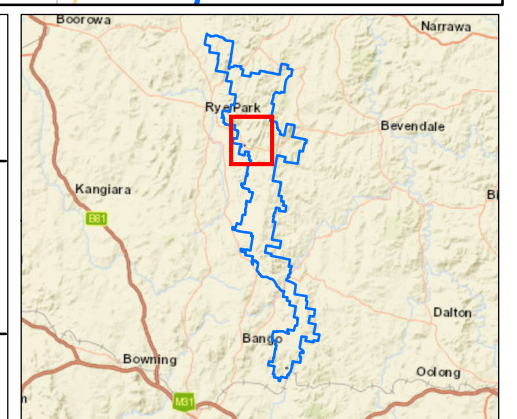


Modified Project		Approved Project	
Modified Indicative Turbine Layout	Approved Indicative Turbine Layout	Approved Temporary Batch Plants	Local Government Area
Turbines Removed during RTS	Approved Transmission Line (33kV and 330kV)	Approved Development Corridor	Transgrid Transmission Line (330kV)
Permanent Met Masts	Approved Collector Substations	Approved Project Boundary	
Revised Transmission Line (33kV)	Approved Connection Substation		
Revised Transmission Line (Up to 330kV)	Approved O&M Facilities		
Revised Collector Substation	Approved Temporary Construction Compounds		
Revised Connection Substation	Revised Temporary Batch Plants		
Revised O&M Facility	Revised Temporary Laydown Area		
Revised Temporary Construction Compounds	Modified Development Corridor – Wind Farm		
Revised Temporary Batch Plants	Development Corridor – Permanent Met Masts		
Revised Temporary Laydown Area	Modified Project Boundary		

Date: 10/08/2020  
Version: B

0 0.25 0.5  
Kilometres

GDA 1994 MGA Zone 55  
1:25,000



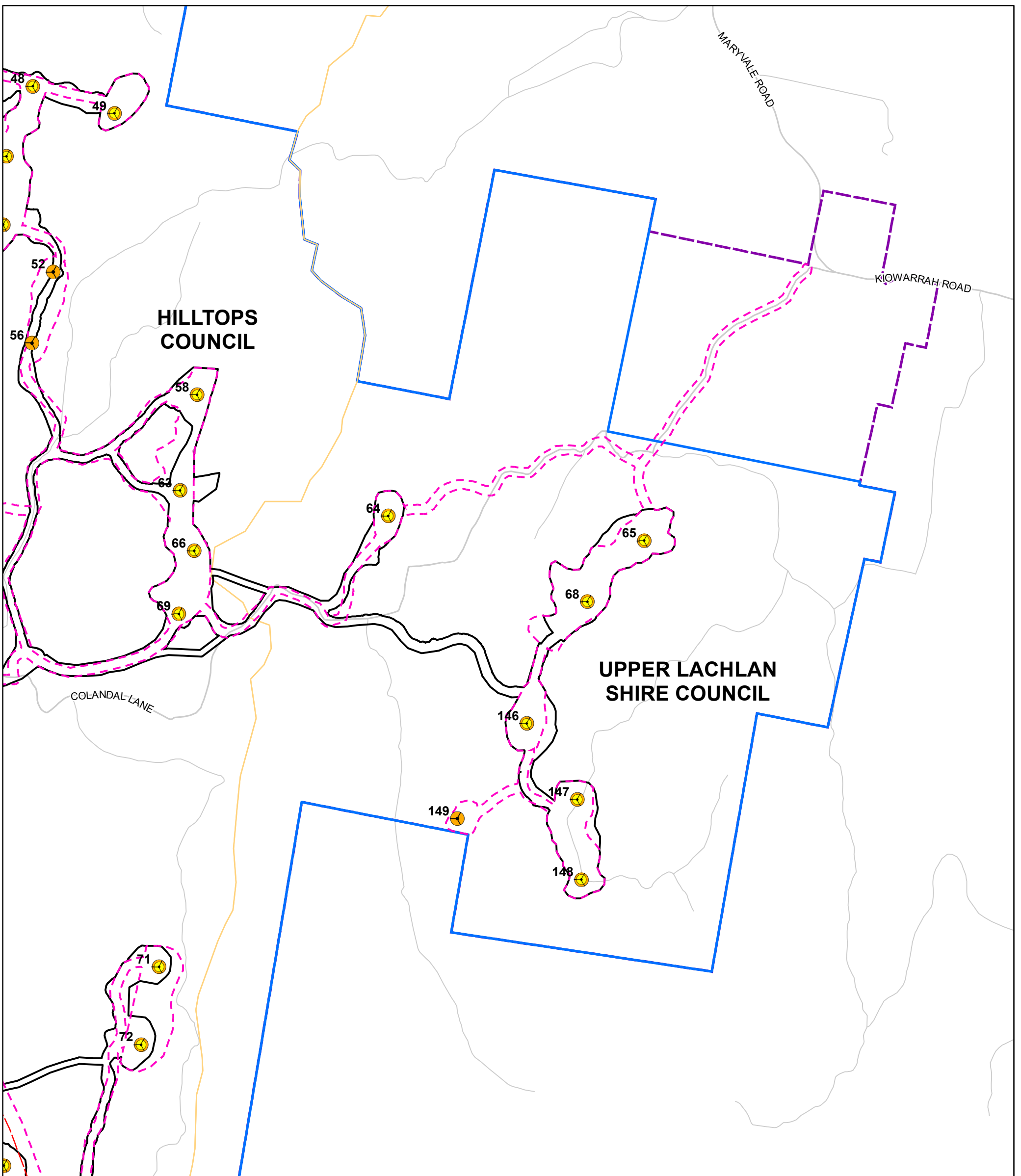
**Note 1.** The alignment of the revised access tracks and revised underground cable is based on an optimised infrastructure layout (based on the micro-siting allowance in the Development Consent). All infrastructure is indicative only.

**Note 2.** The development corridor includes allowance for the underground cabling and access tracks (in addition to the infrastructure shown).

**Note 3.** The Project Boundary is based on publicly available cadastre and during detailed design will be updated for the actual property boundaries and road reserves.

Document Path: G:\GIS\Development\_Sites\NSW\RyePark\Maps\Working\RPWF\_126B\_Infrastructure Changes\_20200810.mxd





Modified Project		Approved Project	
	Modified Indicative Turbine Layout		Approved Indicative Turbine Layout
	Turbines Removed during RTS		Approved Transmission Line (33kV and 330kV)
	Permanent Met Masts		Approved Development Corridor
	Revised Transmission Line (33kV)		Approved Project Boundary
	Revised Transmission Line (Up to 330kV)		Approved Collector Substations
	Revised Collector Substation		Approved Connection Substation
	Revised Connection Substation		Approved O&M Facilities
	Revised O&M Facility		Approved Temporary Construction Compounds
	Revised Temporary Construction Compounds		Revised Temporary Batch Plants
	Revised Temporary Batch Plants		Revised Temporary Laydown Area
	Revised Temporary Laydown Area		Modified Development Corridor – Wind Farm
	Modified Development Corridor – Wind Farm		Development Corridor – Permanent Met Masts
	Modified Project Boundary		Local Government Area
			Transgrid Transmission Line (330kV)

**Note 1.** The alignment of the revised access tracks and revised underground cable is based on an optimised infrastructure layout (based on the micro-siting allowance in the Development Consent). All infrastructure is indicative only.

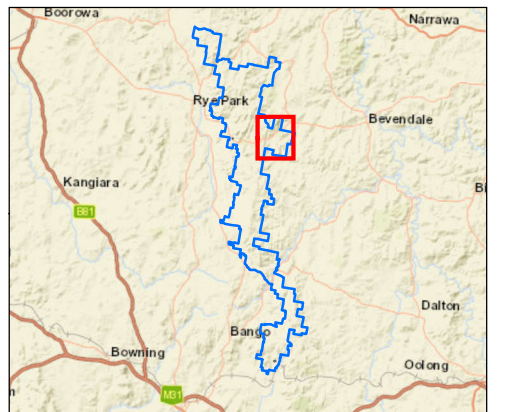
**Note 2.** The development corridor includes allowance for the underground cabling and access tracks (in addition to the infrastructure shown).

**Note 3.** The Project Boundary is based on publicly available cadastre and during detailed design will be updated for the actual property boundaries and road reserves.

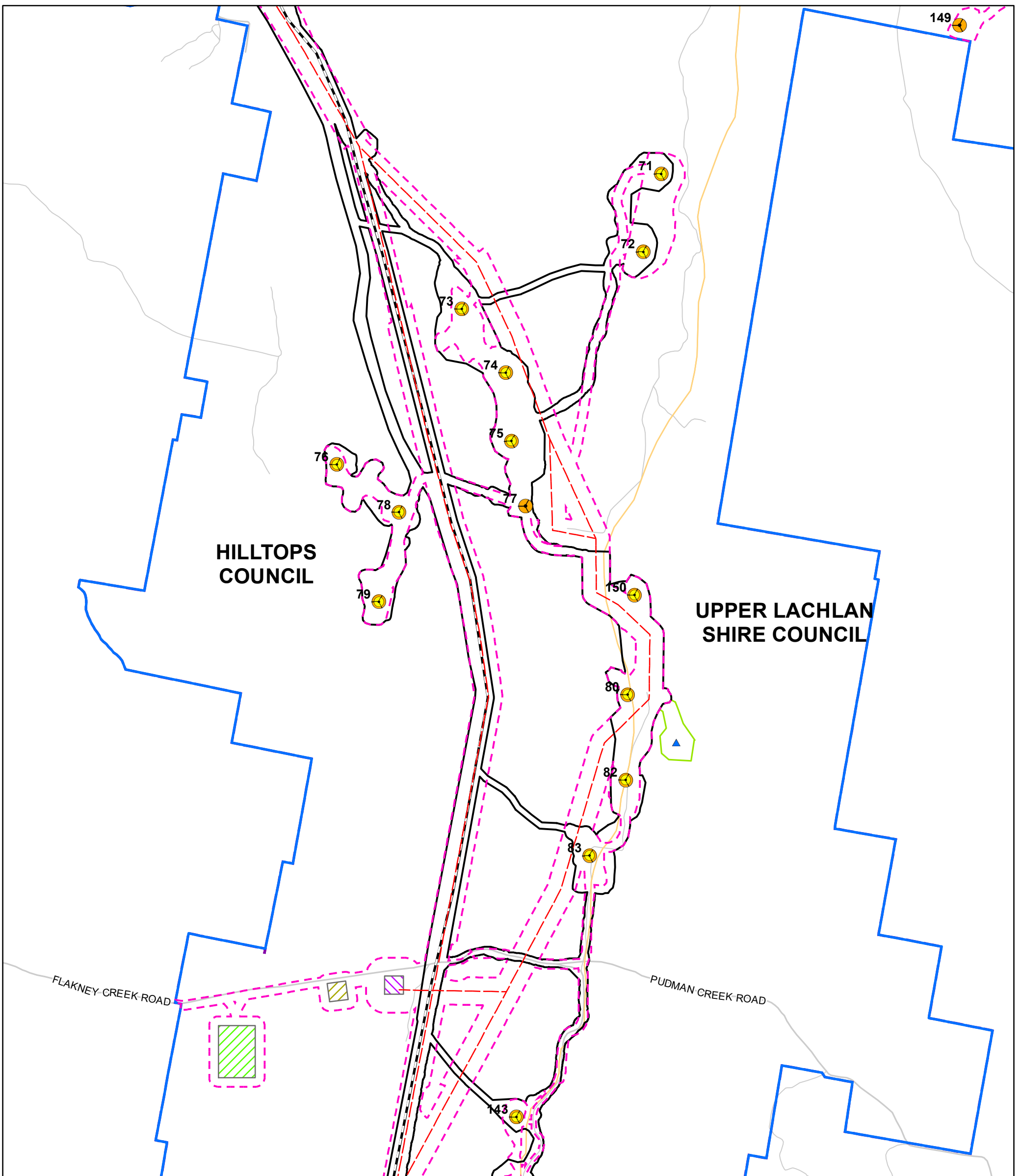
Date: 10/08/2020  
Version: B

0 0.25 0.5  
Kilometres

GDA 1994 MGA Zone 55  
1:20,000



Document Path: G:\GIS\Development\_Sites\NSW\RyePark\Maps\Working\RPWF\_126B\_Infrastructure Changes\_20200810.mxd



Modified Project		Approved Project	
Modified Indicative Turbine Layout	Approved Indicative Turbine Layout	Approved Temporary Batch Plants	Local Government Area
Turbines Removed during RTS	Approved Transmission Line (33kV and 330kV)	Approved Development Corridor	Transgrid Transmission Line (330kV)
Permanent Met Masts	Approved Collector Substations	Approved Project Boundary	
Revised Transmission Line (33kV)	Approved Connection Substation		
Revised Transmission Line (Up to 330kV)	Approved O&M Facilities		
Revised Collector Substation	Approved Temporary Construction Compounds		
Revised Connection Substation	Revised Temporary Batch Plants		
Revised O&M Facility	Revised Temporary Laydown Area		
Revised Temporary Construction Compounds	Modified Development Corridor – Wind Farm		
Revised Temporary Batch Plants	Development Corridor – Permanent Met Masts		
Revised Temporary Laydown Area	Modified Project Boundary		

**Note 1.** The alignment of the revised access tracks and revised underground cable is based on an optimised infrastructure layout (based on the micro-siting allowance in the Development Consent). All infrastructure is indicative only.

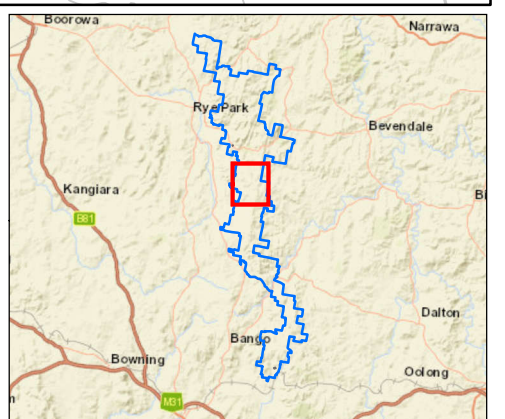
**Note 2.** The development corridor includes allowance for the underground cabling and access tracks (in addition to the infrastructure shown).

**Note 3.** The Project Boundary is based on publicly available cadastre and during detailed design will be updated for the actual property boundaries and road reserves.

Date: 10/08/2020  
Version: B

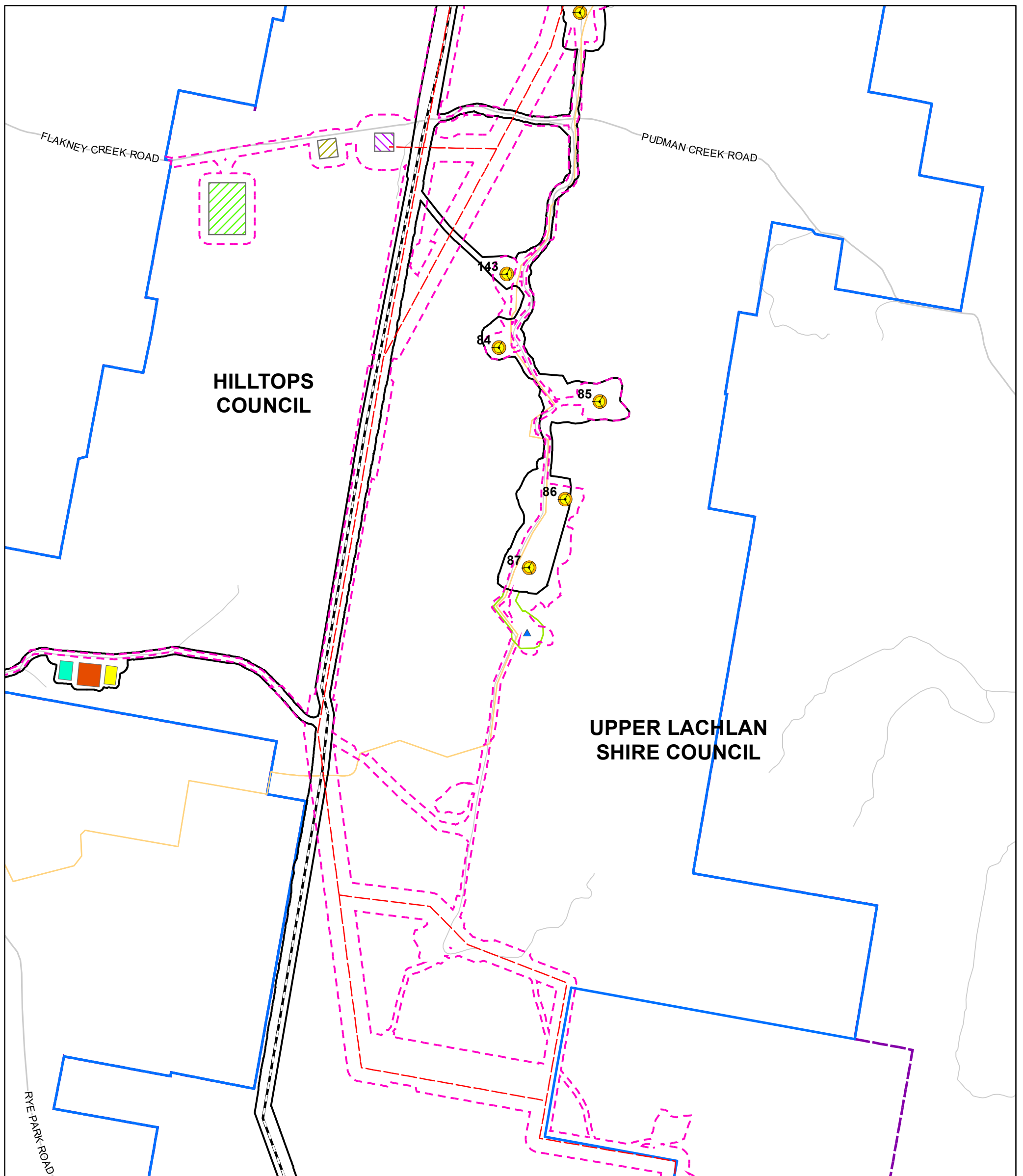
0 0.25 0.5  
Kilometres

GDA 1994 MGA Zone 55  
1:20,000



Document Path: G:\GIS\Development\_Sites\NSW\RyePark\Maps\Working\RPWF\_126B\_Infrastructure Changes\_20200810.mxd





Modified Project		Approved Project	
	Modified Indicative Turbine Layout		Approved Indicative Turbine Layout
	Turbines Removed during RTS		Approved Transmission Line (33kV and 330kV)
	Permanent Met Masts		Approved Temporary Batch Plants
	Revised Transmission Line (33kV)		Approved Development Corridor
	Revised Transmission Line (Up to 330kV)		Approved Project Boundary
	Revised Collector Substation		Approved Collector Substations
	Revised Connection Substation		Approved Connection Substation
	Revised O&M Facility		Approved O&M Facilities
	Revised Temporary Construction Compounds		Approved Temporary Construction Compounds
	Revised Temporary Batch Plants		
	Revised Temporary Laydown Area		
	Modified Development Corridor – Wind Farm		
	Development Corridor – Permanent Met Masts		
	Modified Project Boundary		

**Note 1.** The alignment of the revised access tracks and revised underground cable is based on an optimised infrastructure layout (based on the micro-siting allowance in the Development Consent). All infrastructure is indicative only.

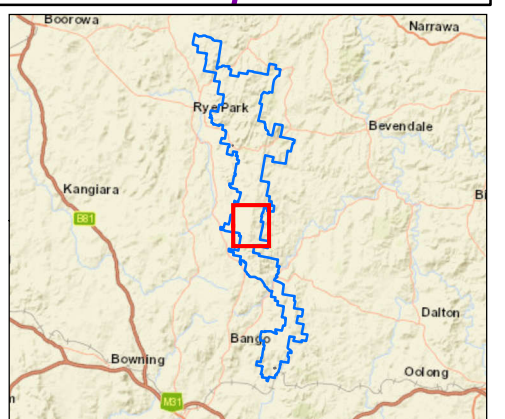
**Note 2.** The development corridor includes allowance for the underground cabling and access tracks (in addition to the infrastructure shown).

**Note 3.** The Project Boundary is based on publicly available cadastre and during detailed design will be updated for the actual property boundaries and road reserves.

Date: 10/08/2020  
Version: B

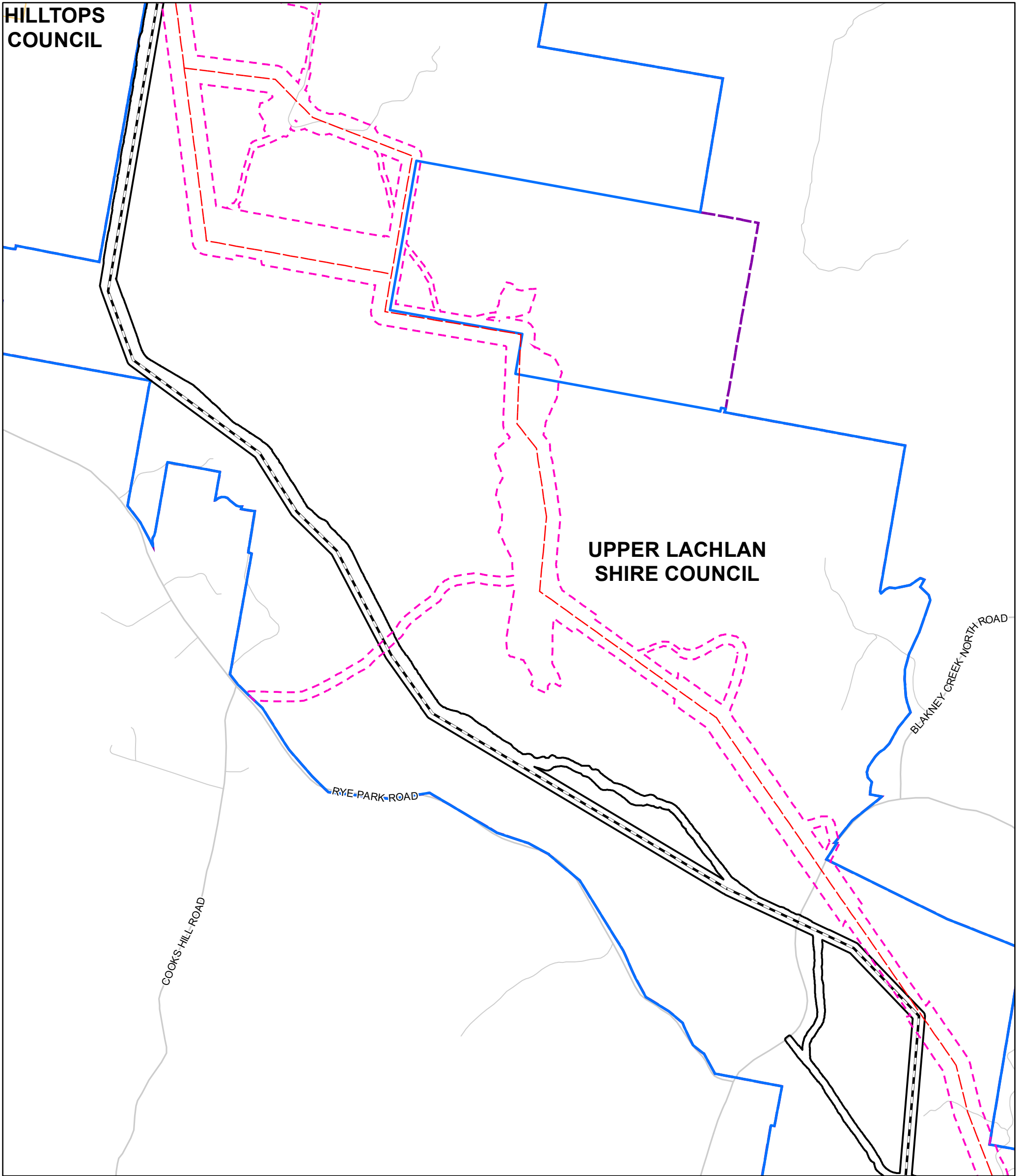
0    0.25    0.5  
Kilometres

GDA 1994 MGA Zone 55  
1:20,000



Document Path: G:\GIS\Development\_Sites\NSW\RyePark\Maps\Working\RPWF\_126B\_Infrastructure Changes\_20200810.mxd





Modified Project		Approved Project	
Modified Indicative Turbine Layout	Approved Indicative Turbine Layout	Approved Temporary Batch Plants	Local Government Area
Turbines Removed during RTS	Approved Transmission Line (33kV and 330kV)	Approved Development Corridor	Transgrid Transmission Line (330kV)
Permanent Met Masts	Approved Collector Substations	Approved Project Boundary	
Revised Transmission Line (33kV)	Approved Connection Substation		
Revised Transmission Line (Up to 330kV)	Approved O&M Facilities		
Revised Collector Substation	Approved Temporary Construction Compounds		
Revised Connection Substation	Revised Temporary Batch Plants		
Revised O&M Facility	Revised Temporary Laydown Area		
Revised Temporary Construction Compounds	Modified Development Corridor – Wind Farm		
Revised Temporary Batch Plants	Development Corridor – Permanent Met Masts		
Revised Temporary Laydown Area	Modified Project Boundary		

**Note 1.** The alignment of the revised access tracks and revised underground cable is based on an optimised infrastructure layout (based on the micro-siting allowance in the Development Consent). All infrastructure is indicative only.

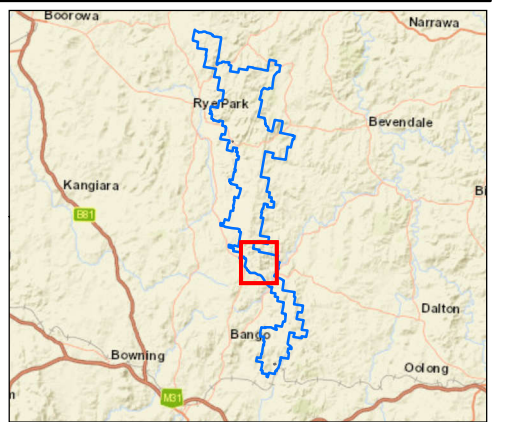
**Note 2.** The development corridor includes allowance for the underground cabling and access tracks (in addition to the infrastructure shown).

**Note 3.** The Project Boundary is based on publicly available cadastre and during detailed design will be updated for the actual property boundaries and road reserves.

Date: 10/08/2020  
Version: B

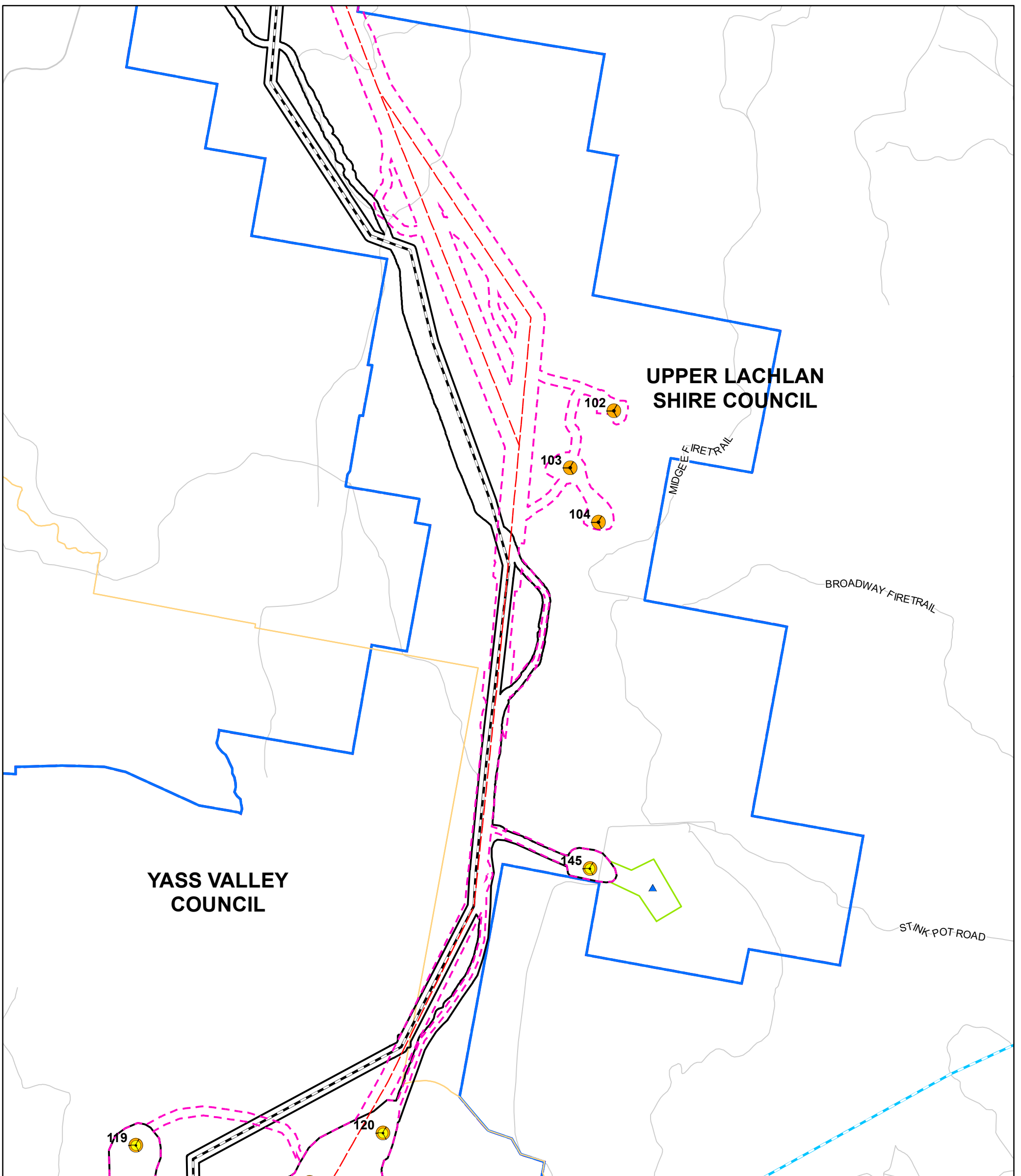
0 0.25 0.5  
Kilometres

GDA 1994 MGA Zone 55  
1:20,000



Document Path: G:\GIS\Development\_Sites\NSW\RyePark\Maps\Working\RPWF\_126B\_Infrastructure Changes\_20200810.mxd





Modified Project		Approved Project	
Modified Indicative Turbine Layout	Approved Indicative Turbine Layout	Approved Temporary Batch Plants	Local Government Area
Turbines Removed during RTS	Approved Transmission Line (33kV and 330kV)	Approved Development Corridor	Transgrid Transmission Line (330kV)
Permanent Met Masts	Approved Collector Substations	Approved Project Boundary	
Revised Transmission Line (33kV)	Approved Connection Substation		
Revised Transmission Line (Up to 330kV)	Approved O&M Facilities		
Revised Collector Substation	Approved Temporary Construction Compounds		
Revised Connection Substation	Revised Temporary Batch Plants		
Revised O&M Facility	Revised Temporary Laydown Area		
Revised Temporary Construction Compounds	Modified Development Corridor – Wind Farm		
Revised Temporary Batch Plants	Development Corridor – Permanent Met Masts		
Revised Temporary Laydown Area	Modified Project Boundary		

**Note 1.** The alignment of the revised access tracks and revised underground cable is based on an optimised infrastructure layout (based on the micro-siting allowance in the Development Consent). All infrastructure is indicative only.

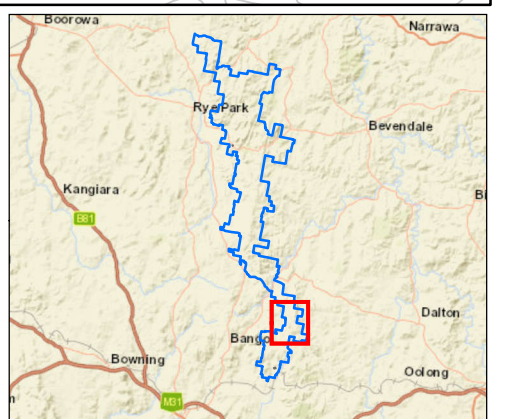
**Note 2.** The development corridor includes allowance for the underground cabling and access tracks (in addition to the infrastructure shown).

**Note 3.** The Project Boundary is based on publicly available cadastre and during detailed design will be updated for the actual property boundaries and road reserves.

Date: 10/08/2020  
Version: B

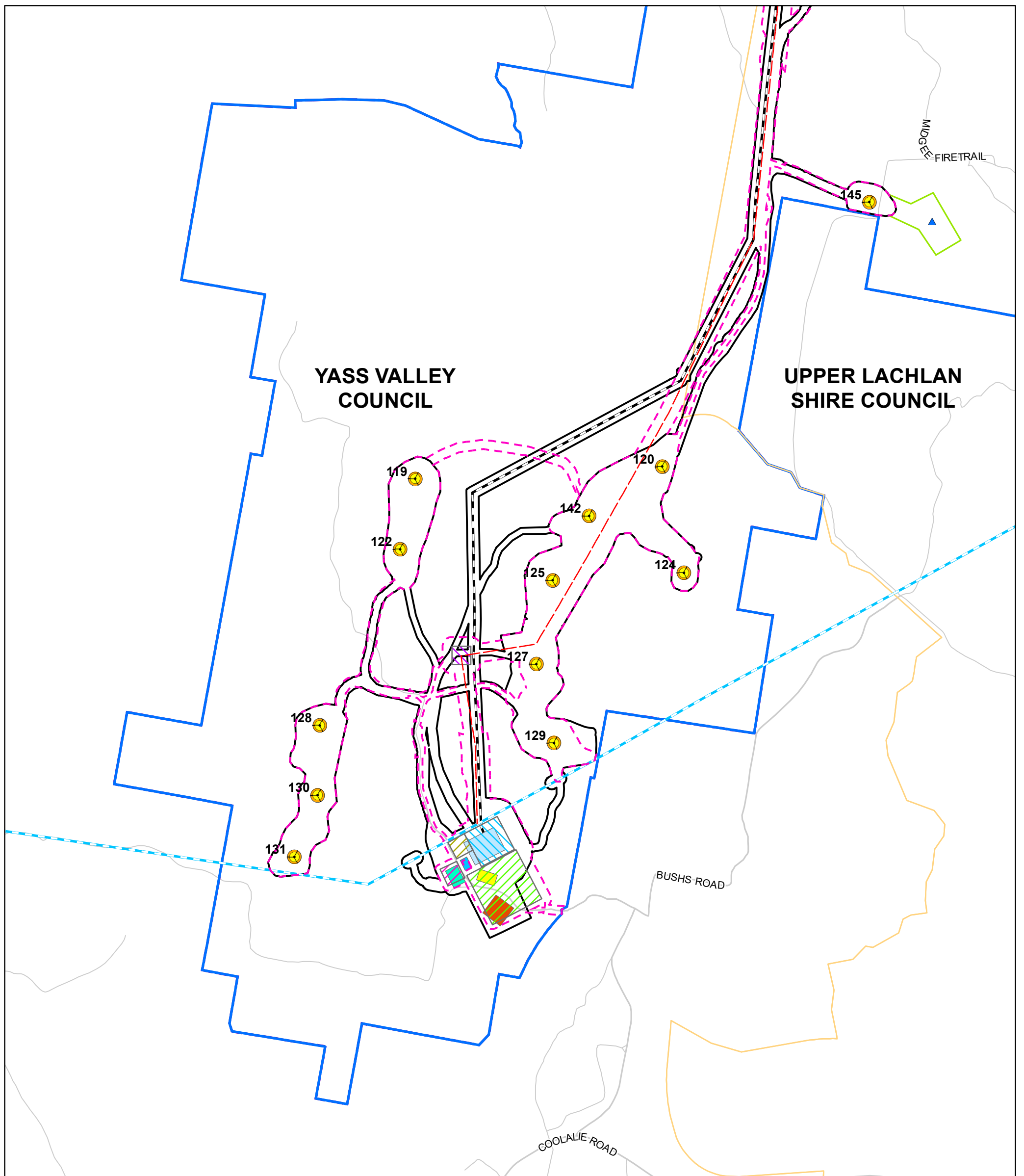
0 0.25 0.5  
Kilometres

GDA 1994 MGA Zone 55  
1:20,000



Document Path: G:\GIS\Development\_Sites\NSW\RyePark\Maps\Working\RPWF\_126B\_Infrastructure Changes\_20200810.mxd





Modified Project		Approved Project	
Modified Indicative Turbine Layout	Approved Indicative Turbine Layout	Approved Temporary Batch Plants	Local Government Area
Turbines Removed during RTS	Approved Transmission Line (33kV and 330kV)	Approved Development Corridor	Transgrid Transmission Line (330kV)
Permanent Met Masts	Approved Collector Substations	Approved Project Boundary	
Revised Transmission Line (33kV)	Approved Connection Substation		
Revised Transmission Line (Up to 330kV)	Approved O&M Facilities		
Revised Collector Substation	Approved Temporary Construction Compounds		
Revised Connection Substation	Revised Temporary Batch Plants		
Revised O&M Facility	Revised Temporary Laydown Area		
Revised Temporary Construction Compounds	Modified Development Corridor – Wind Farm		
Revised Temporary Batch Plants	Development Corridor – Permanent Met Masts		
Revised Temporary Laydown Area	Modified Project Boundary		

**Note 1.** The alignment of the revised access tracks and revised underground cable is based on an optimised infrastructure layout (based on the micro-siting allowance in the Development Consent). All infrastructure is indicative only.

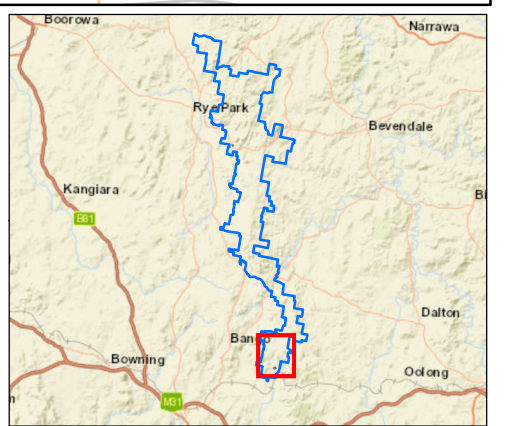
**Note 2.** The development corridor includes allowance for the underground cabling and access tracks (in addition to the infrastructure shown).

**Note 3.** The Project Boundary is based on publicly available cadastre and during detailed design will be updated for the actual property boundaries and road reserves.

Date: 10/08/2020  
Version: B

0    0.25    0.5  
Kilometres

GDA 1994 MGA Zone 55  
1:20,000



Document Path: G:\GIS\Development\_Sites\NSW\RyePark\Maps\Working\RPWF\_126B\_Infrastructure Changes\_20200810.mxd

