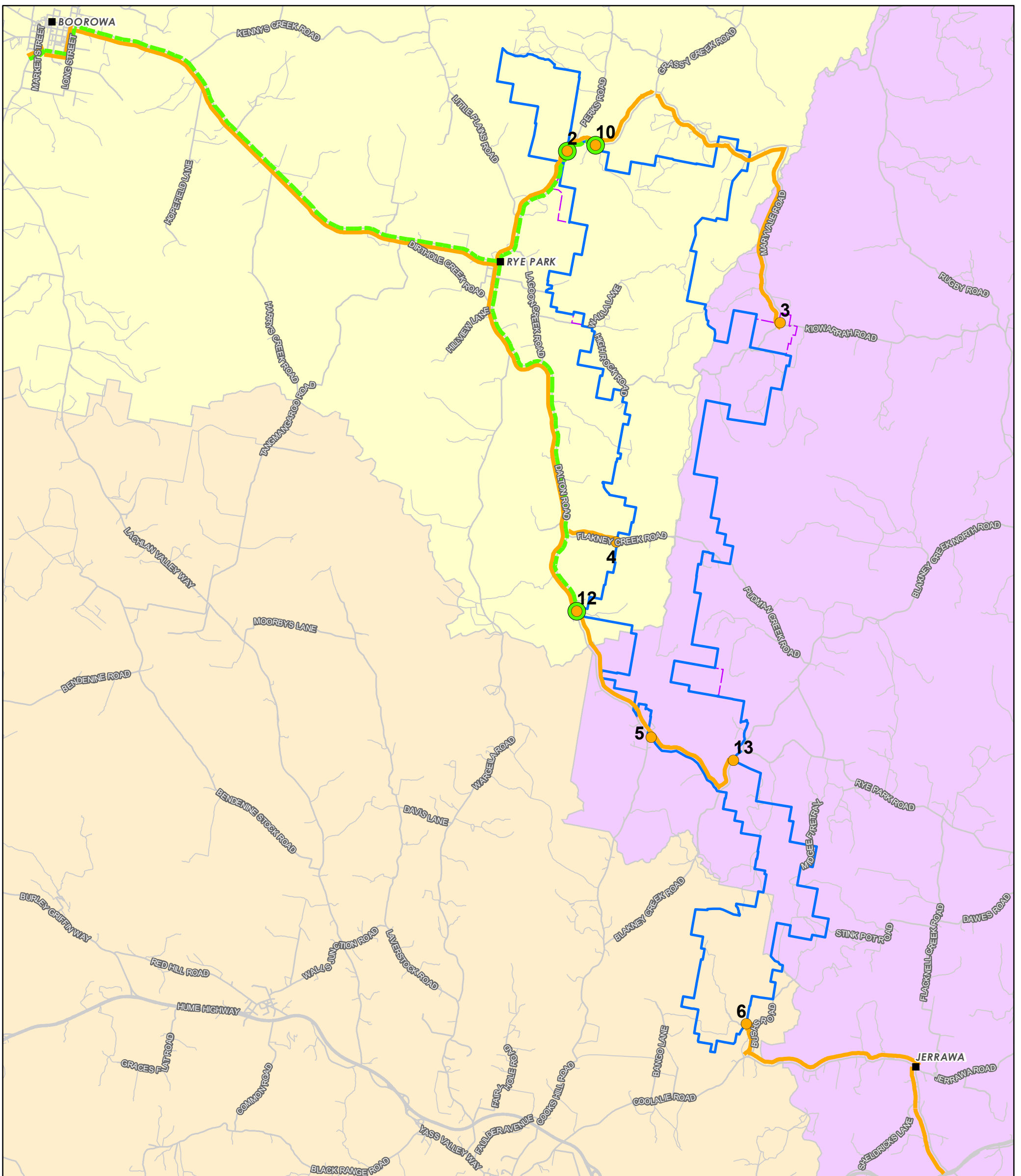




Appendix C: Rye Park wind farm Preliminary Documentation - Preferred Transport Route



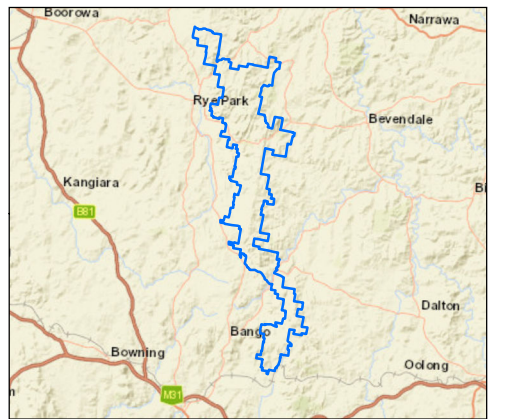
- Approved Site Access Points
- Preferred Site Access Points
- Towns
- Approved Transport Routes
- Preferred Transport Route
- Project Boundary
- Approved Project Boundary

- Local Government Area**
- YASS VALLEY COUNCIL
 - UPPER LACHLAN SHIRE COUNCIL
 - HILLTOPS COUNCIL

Date: 31/03/2020
Version: A

Kilometres

GDA 1994 MGA Zone 55
1:140,000

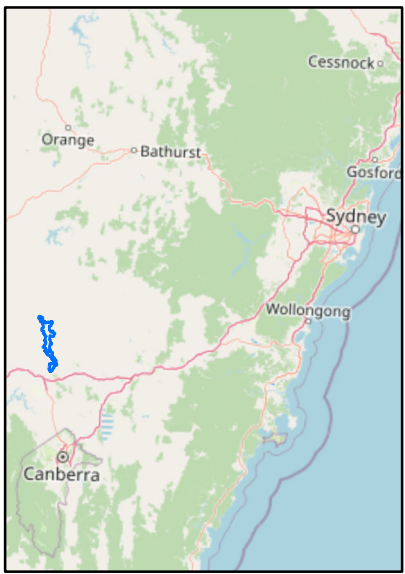
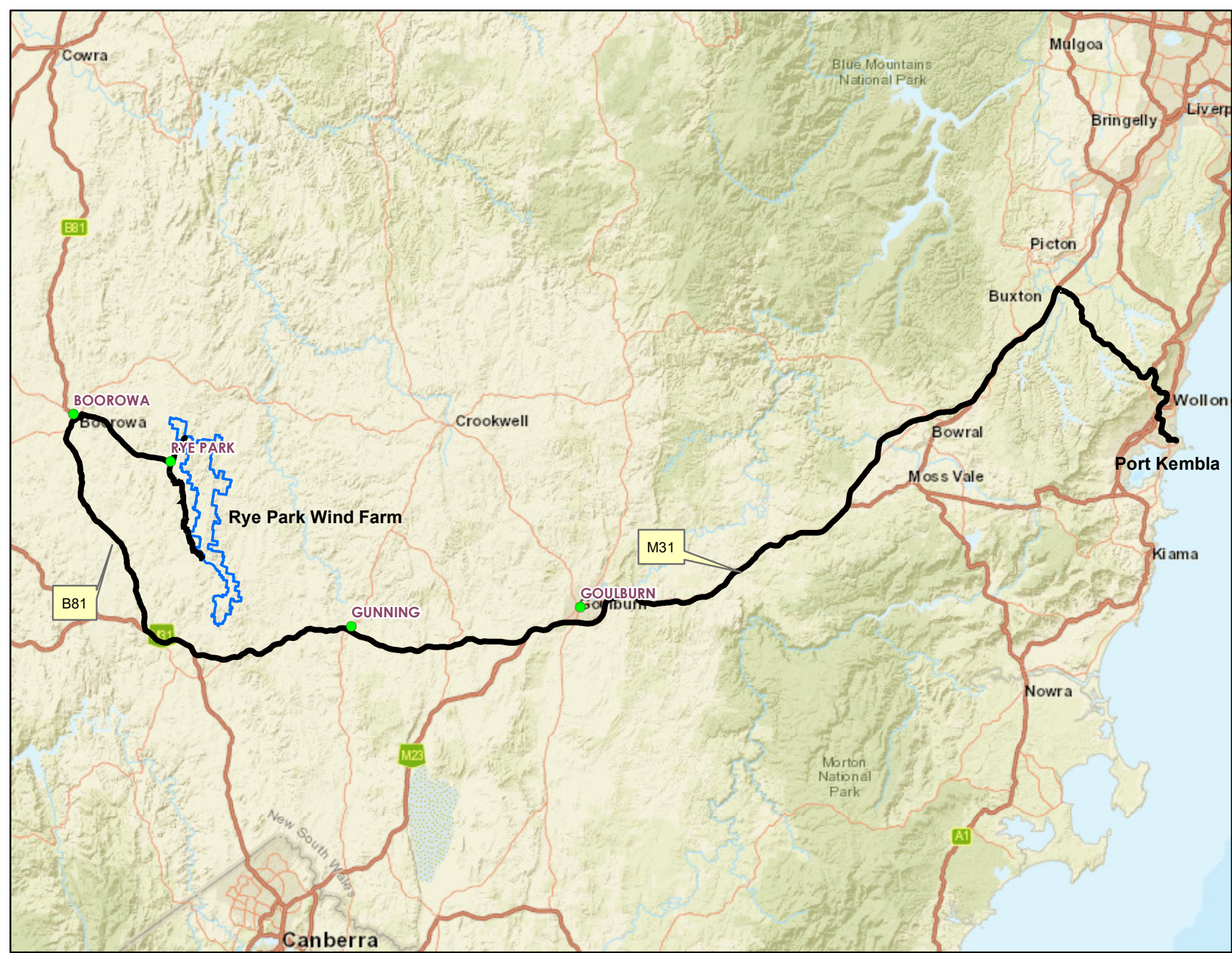


Document Path: G:\GIS\Development_Sites\NSWRyePark\Maps\Working\RPWF_130_Over-dimensional and Heavy Vehicle Access_20200331.mxd

Rye Park Wind Farm

Over-dimensional and Heavy Vehicle Access





Legend
 — Route - Port Kembla to Rye Park Wind Farm
 □ Project Boundary

Date: 09/04/2020
 GDA 1994 MGA Zone 55
 1:1,130,000

0 25 50 km

Document Path: G:\GIS\Development_Sites\NSWRyePark\Map\Working\RPWF_113B_Route - Port Kembla to Rye Park Wind Farm_20200409.mxd

Rye Park Wind Farm - Over-Dimensional and Heavy Vehicle Access Route Options
 Route - Port Kembla to Rye Park Wind Farm





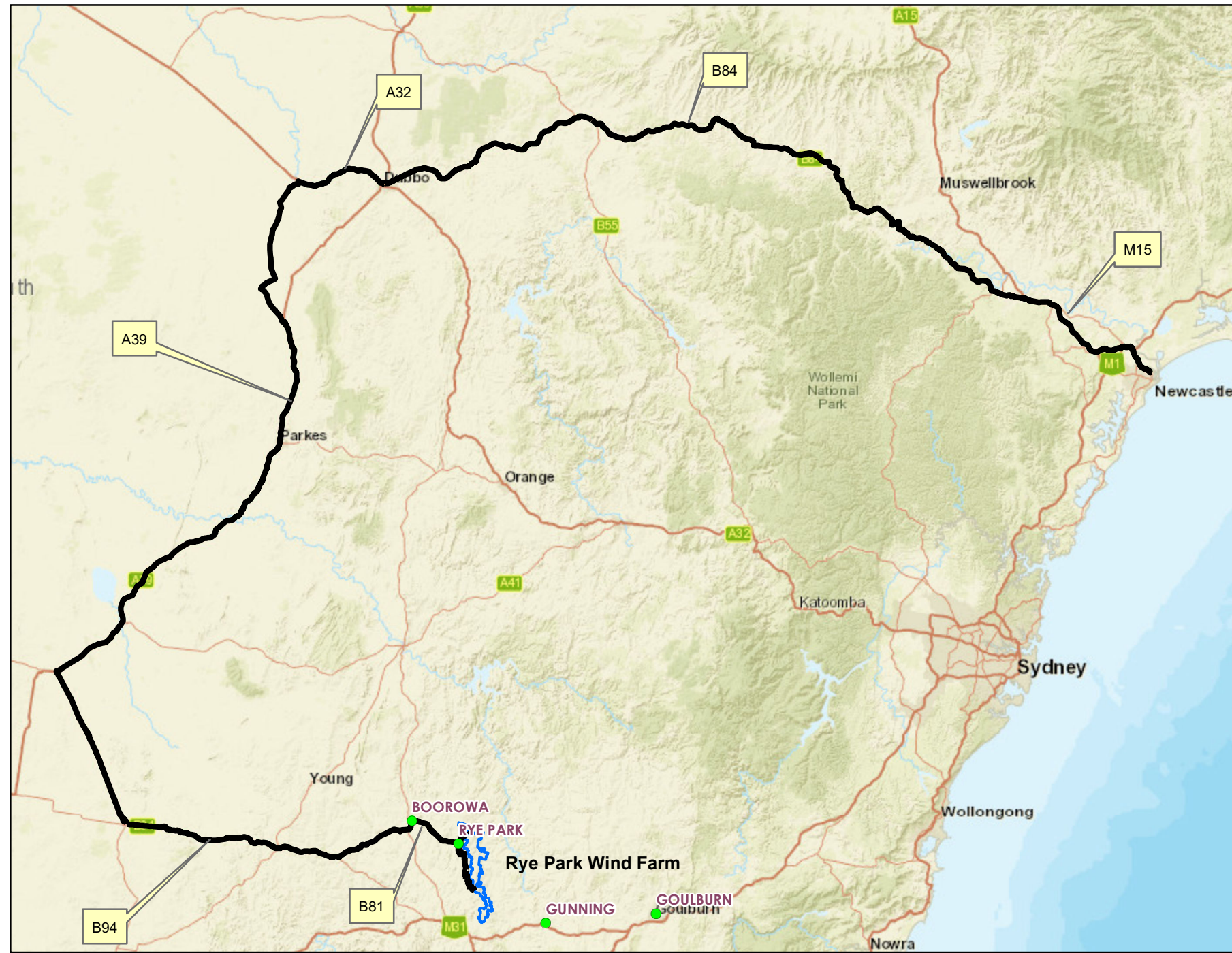
Legend
 — Route - Newcastle to Rye Park Wind Farm
 □ Project Boundary

Date: 09/04/2020
 GDA 1994 MGA Zone 55
 1:1,640,000

Document Path: G:\GIS\Development_Sites\NSW\RyePark\Maps\Working\RPWF_121B_Route - Newcastle to Rye Park Wind Farm (509km)_20200408.mxd

Rye Park Wind Farm - Over-Dimensional and Heavy Vehicle Access Route Options
 Route - Newcastle to Rye Park Wind Farm (via Gunning) (509km)





Legend
 — Route - Newcastle to Rye Park Wind Farm
 □ Project Boundary

Date: 09/04/2020
 GDA 1994 MGA Zone 55
 1:2,360,000

0 50 100 km

Document Path: G:\GIS\Development_Sites\NSW\RyePark\Maps\Working\RPWF_122B_Route - Newcastle to Rye Park Wind Farm (927km)_20200409.mxd

Rye Park Wind Farm - Over-Dimensional and Heavy Vehicle Access Route Options
 Route - Newcastle to Rye Park Wind Farm (via Dubbo) (927km)

