

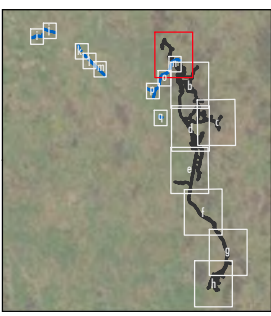


Appendix J: Rye Park wind farm Preliminary Documentation – Figure: Superb parrot habitat, painted honeyeater and white-throated needletail records within the Development Corridor and Indicative Development Footprints



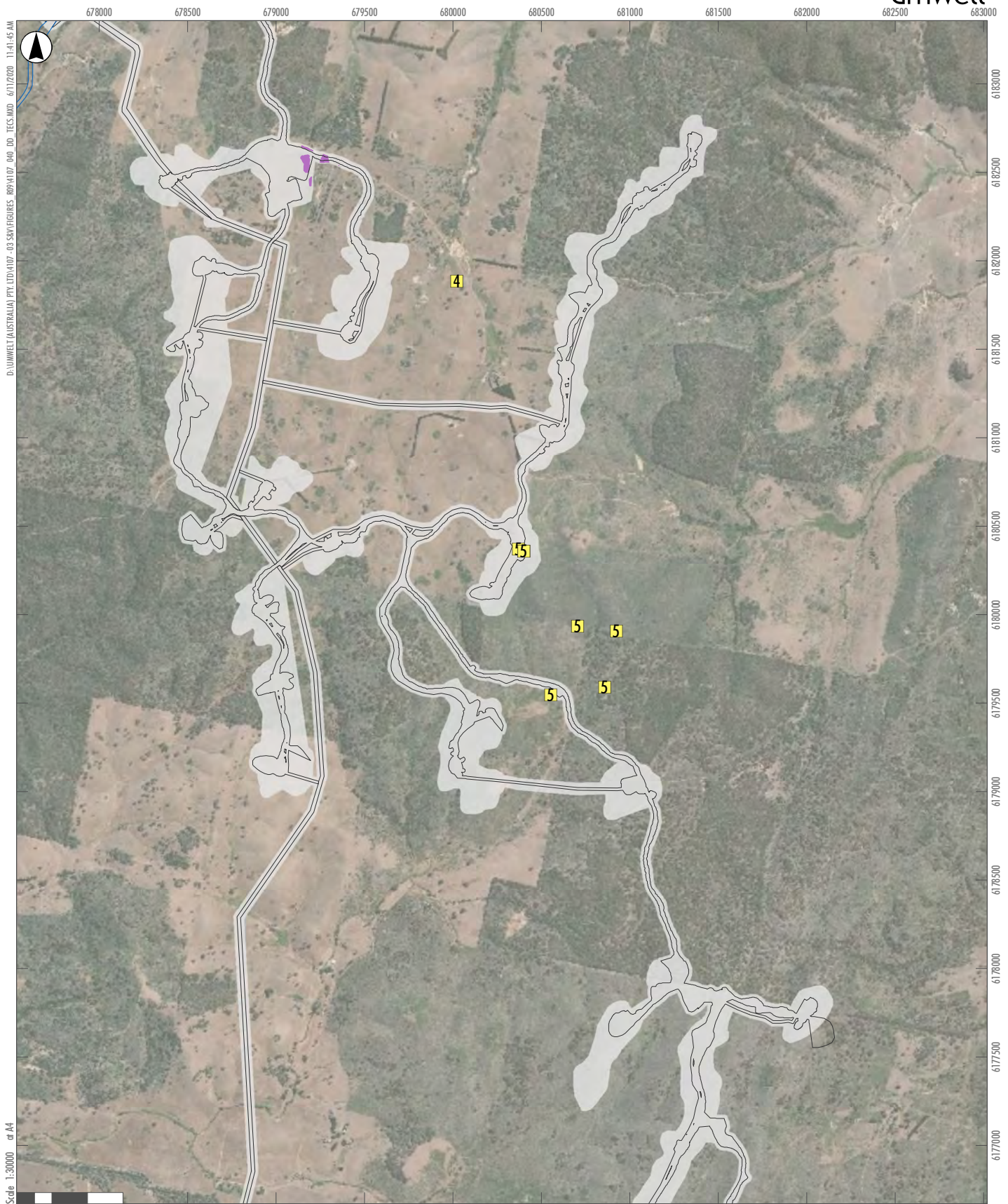
Legend

- Rye Park Wind Farm Modified Indicative Development Footprint – External Roads
- Rye Park Wind Farm Modified Indicative Development Footprint – Wind Farm
- Rye Park Wind Farm Modified Development Corridor
- Superb Parrot - Breeding Habitat
- Threatened Species Records**
- Painted Honeyeater
- Superb Parrot
- White-throated Needletail



APPENDIX Ja

Superb parrot habitat, painted honeyeater and white-throated needletail records within the Development Corridor and Indicative Development Footprints



D:\UMWELT (AUSTRALIA) PTY.LTD\1107 - 03 SKM\FIGURES_RP\1107_040_DO_TECs.MXD 6/11/2020 11:41:05 AM

Scale 1:30000 or A4

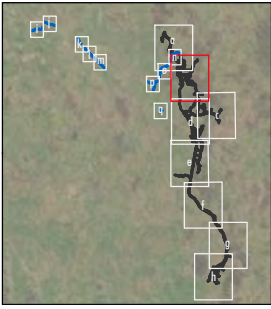
GDA 1994 MGA Zone 55

Legend

- Rye Park Wind Farm Modified Indicative Development Footprint – External Roads
- Rye Park Wind Farm Modified Indicative Development Footprint – Wind Farm
- Rye Park Wind Farm Modified Development Corridor
- Superb Parrot - Breeding Habitat

Threatened Species Records

- 4 Superb Parrot
- 5 White-throated Needle-tail



APPENDIX Jb

Superb parrot habitat, painted honeyeater and white-throated needle-tail records within the Development Corridor and Indicative Development Footprints



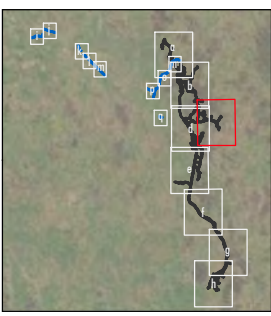
D:\UMWELT (AUSTRALIA) PTV.LDD\14107_03 SWM\FIGURES\BP\14107_040_DO_TEC5.MXD 6/11/2020 11:41:47 AM

Scale 1:30000 at A4

GDA 1994 MGA Zone 55

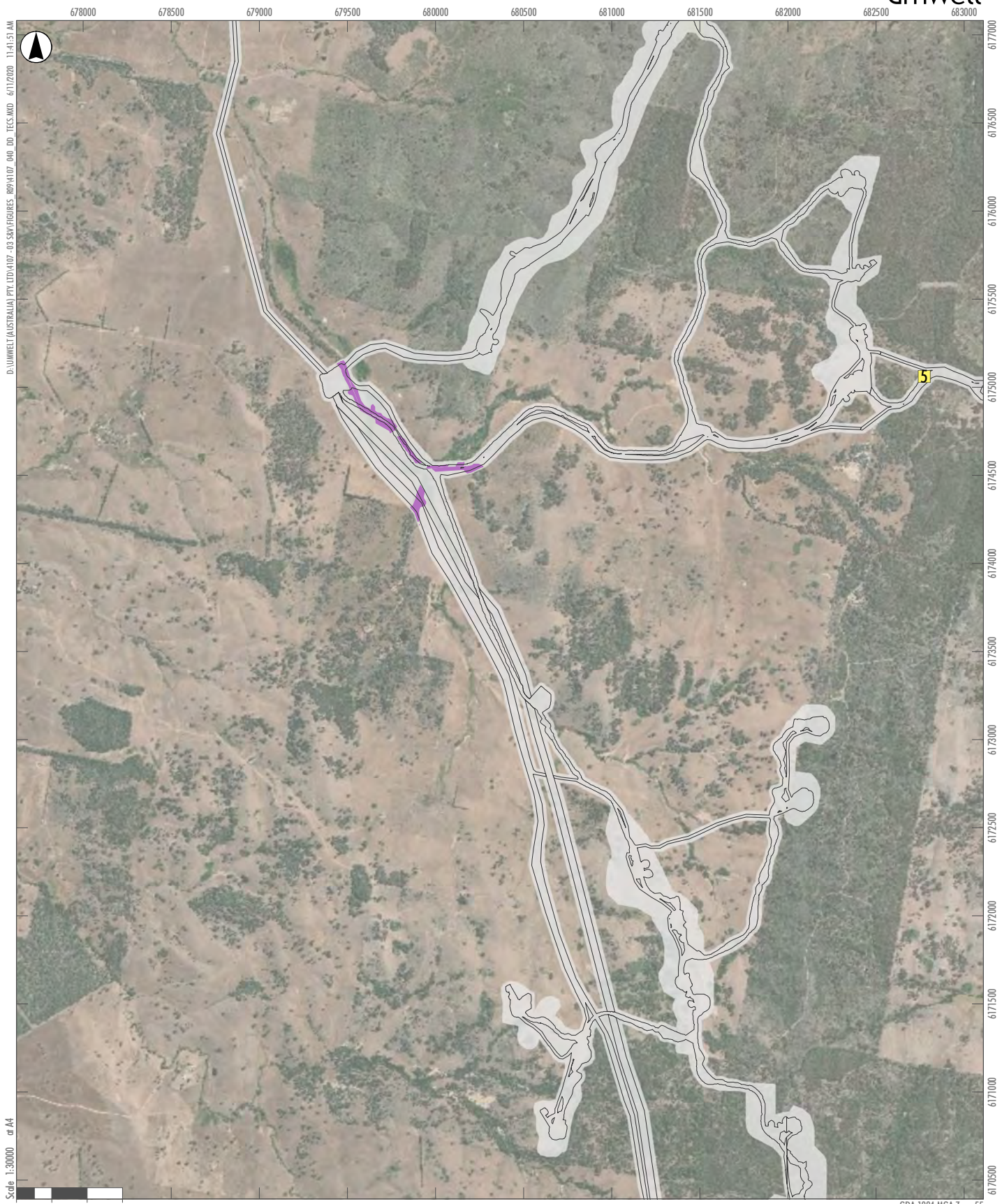
Legend

- Rye Park Wind Farm Modified Indicative Development Footprint – Wind Farm
 - Rye Park Wind Farm Modified Development Corridor
 - Superb Parrot - Breeding Habitat
- Threatened Species Records**
- 5 White-throated Needletail



APPENDIX Jc

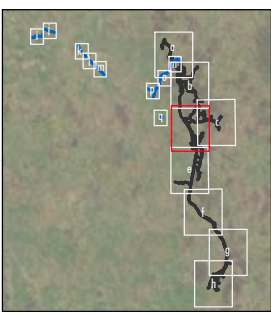
Superb parrot habitat, painted honeyeater and white-throated needletail records within the Development Corridor and Indicative Development Footprints



GDA 1994 MGA Zone 55

Legend

- Rye Park Wind Farm Modified Indicative Development Footprint – Wind Farm
 - Rye Park Wind Farm Modified Development Corridor
 - Superb Parrot - Breeding Habitat
- Threatened Species Records**
- White-throated Needle-tail



APPENDIX Jd

Superb parrot habitat, painted honeyeater and white-throated needle-tail records within the Development Corridor and Indicative Development Footprints

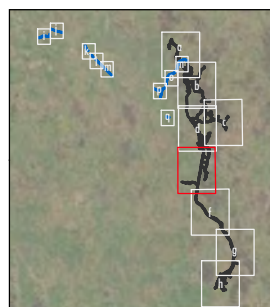


Legend

- Rye Park Wind Farm Modified Indicative Development Footprint – Wind Farm
- Rye Park Wind Farm Modified Development Corridor
- Superb Parrot - Breeding Habitat

Threatened Species Records

- Painted Honeyeater
- Superb Parrot
- White-throated Needle-tail



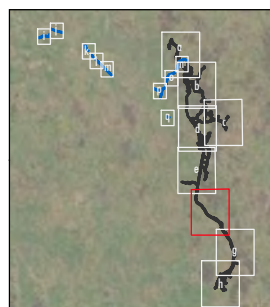
APPENDIX Je

Superb parrot habitat, painted honeyeater and white-throated needle-tail records within the Development Corridor and Indicative Development Footprints



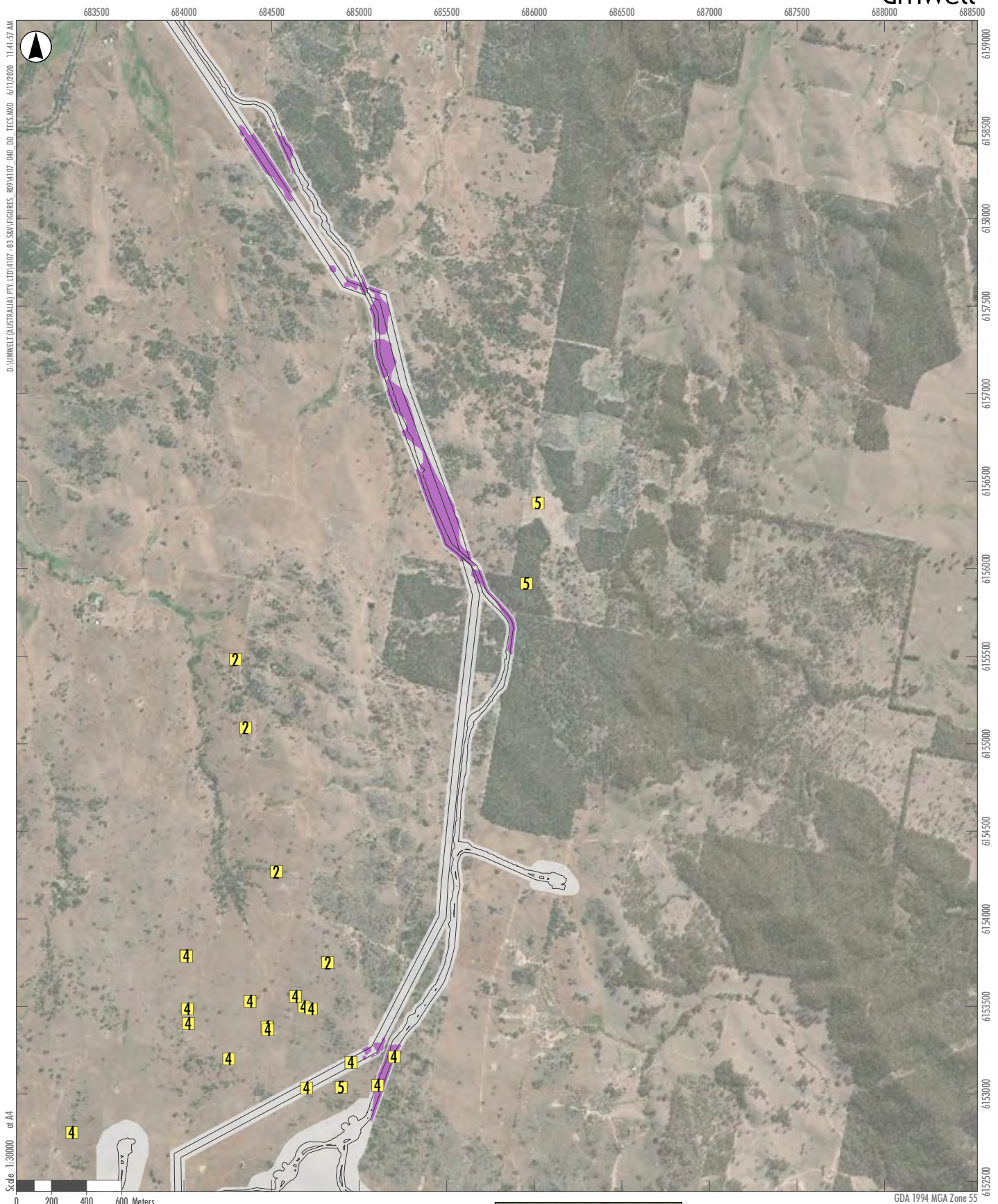
Legend

- Rye Park Wind Farm Modified Indicative Development Footprint – Wind Farm
- Rye Park Wind Farm Modified Development Corridor
- Superb Parrot - Breeding Habitat
- Threatened Species Records**
- White-throated Needletail

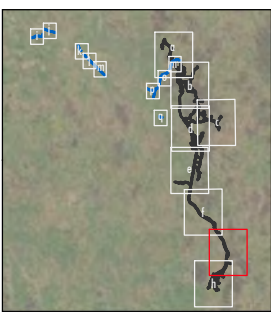


APPENDIX Jf

Superb parrot habitat, painted honeyeater and white-throated needletail records within the Development Corridor and Indicative Development Footprints

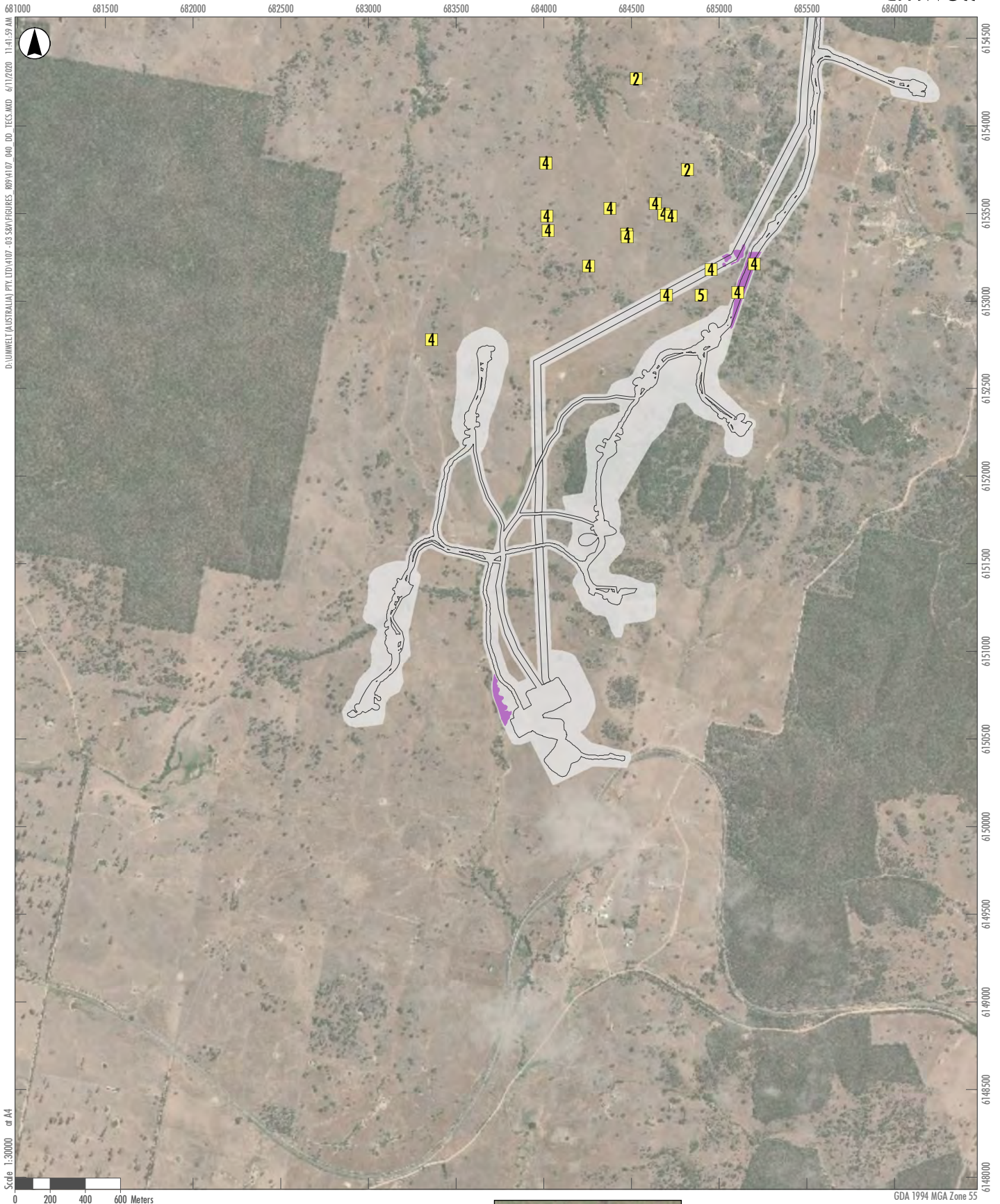


- Legend**
- Rye Park Wind Farm Modified Indicative Development Footprint – Wind Farm
 - Rye Park Wind Farm Modified Development Corridor
 - Superb Parrot - Breeding Habitat
- Threatened Species Records**
- 2 Painted Honeyeater
 - 4 Superb Parrot
 - 5 White-throated Needle-tail

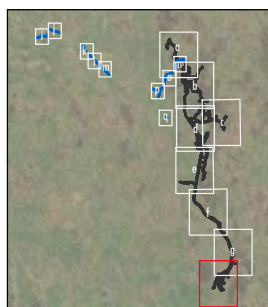


APPENDIX Jg

Superb parrot habitat, painted honeyeater and white-throated needletail records within the Development Corridor and Indicative Development Footprints



- Legend**
- Rye Park Wind Farm Modified Indicative Development Footprint – Wind Farm
 - Rye Park Wind Farm Modified Development Corridor
 - Superb Parrot - Breeding Habitat
- Threatened Species Records**
- Painted Honeyeater
 - Superb Parrot
 - White-throated Needle-tail



APPENDIX Jh

Superb parrot habitat, painted honeyeater and white-throated needle-tail records within the Development Corridor and Indicative Development Footprints



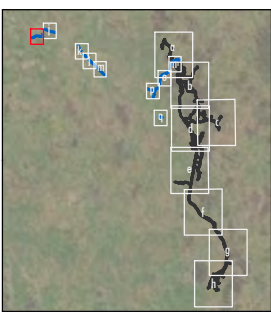
D:\UMWELT (AUSTRALIA) PVT.LTD\1107_03 SW\FIGURES_RBP\1107_040_DO_TCS.MXD 6/11/2020 11:42:05 AM

Scale 1:10000 or A4

GDA 1994 MGA Zone 55

Legend

- Rye Park Wind Farm Modified Indicative Development Footprint
- Superb Parrot - Breeding Habitat



APPENDIX Ji

Superb parrot habitat, painted honeyeater and white-throated needletail records within the Development Corridor and Indicative Development Footprints

659500

660000

660500

D:\UMWELT (AUSTRALIA) PVT.LTD\14107 - 03 SW\FIGURES\BP\14107_040_DO_TEC5.MXD 6/11/2020 11:42:10 AM



618500

618000

6187500

6187000

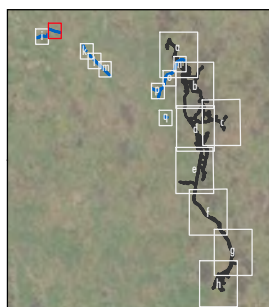
Scale 1:10000 or A4



GDA 1994 MGA Zone 55

Legend

- Rye Park Wind Farm Modified Indicative Development Footprint
- External Roads
- Superb Parrot - Breeding Habitat



APPENDIX Jj

Superb parrot habitat, painted honeyeater and white-throated needletail records within the Development Corridor and Indicative Development Footprints



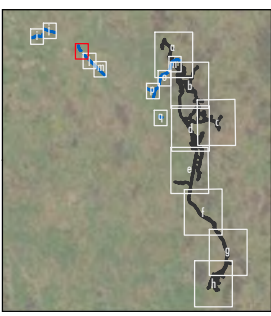
D:\UMWELT (AUSTRALIA) PVT.LTD\1107 - 03 SW\FIGURES\BP\1107_040_DO_TEC5.MXD 6/11/2020 11:42:13 AM

Scale 1:10000 at A4

GDA 1994 MGA Zone 55

Legend

- Rye Park Wind Farm Modified Indicative Development Footprint
- External Roads
- Superb Parrot - Breeding Habitat



APPENDIX Jk

Superb parrot habitat, painted honeyeater and white-throated needletail records within the Development Corridor and Indicative Development Footprints



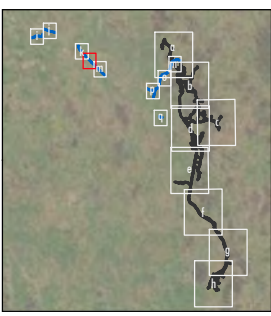
D:\UMWELT (AUSTRALIA) PVT.LTD\1107-03 SW\FIGURES BP\1107_040_DO_TCS.MXD 6/11/2020 11:42:17 AM

Scale 1:10000 or A4

GDA 1994 MGA Zone 55

Legend

- Rye Park Wind Farm Modified Indicative Development Footprint
- External Roads



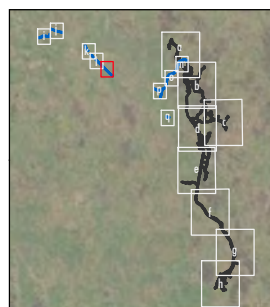
APPENDIX JI

Superb parrot habitat, painted honeyeater and white-throated needletail records within the Development Corridor and Indicative Development Footprints



Legend

- Rye Park Wind Farm Modified Indicative Development Footprint
- Superb Parrot - Breeding Habitat



APPENDIX Jm

Superb parrot habitat, painted honeyeater and white-throated needletail records within the Development Corridor and Indicative Development Footprints



D:\UMWELT (AUSTRALIA) PVT.LTD\14107-03 SW\FIGURES\BP\14107_040_DO_TEC5.MXD 6/11/2020 11:42:28 AM

Scale 1:10000 or A4

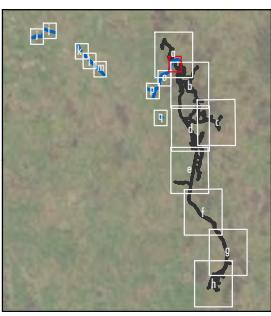
GDA 1994 MGA Zone 55

Legend

- Rye Park Wind Farm Modified Indicative Development Footprint – External Roads
- Rye Park Wind Farm Modified Indicative Development Footprint – Wind Farm
- Rye Park Wind Farm Modified Development Corridor

Threatened Species Records

- White-throated Needle-tail



APPENDIX Jn

Superb parrot habitat, painted honeyeater and white-throated needle-tail records within the Development Corridor and Indicative Development Footprints



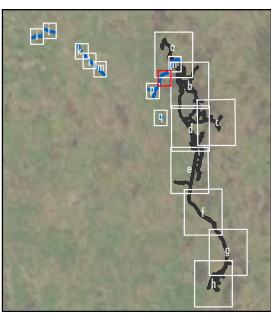
D:\UMWELT (AUSTRALIA) PVT.LTD\14107_03 SW\FIGURES RPP\14107_040_DO_TEC5.MXD 6/11/2020 11:42:31 AM

Scale 1:10000 or A4

GDA 1994 MGA Zone 55

Legend

- Rye Park Wind Farm Modified Indicative Development Footprint
- External Roads
- Superb Parrot - Breeding Habitat



APPENDIX Jo

Superb parrot habitat, painted honeyeater and white-throated needletail records within the Development Corridor and Indicative Development Footprints

674000 674500 675000 675500



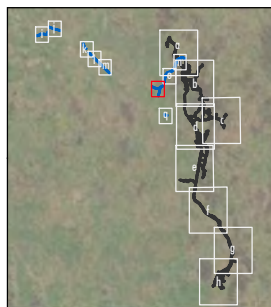
D:\UMWELT (AUSTRALIA) PVT.LTD\14107_03 SW\FIGURES BP\14107_040_DO_TEC5.MXD 6/11/2020 11:42:35 AM

Scale 1:10000 or A4

GDA 1994 MGA Zone 55

Legend

- Rye Park Wind Farm Modified Indicative Development Footprint
- External Roads
- Superb Parrot - Breeding Habitat



APPENDIX Jp

Superb parrot habitat, painted honeyeater and white-throated needletail records within the Development Corridor and Indicative Development Footprints

675500

676000

676500

D:\UMWELT (AUSTRALIA) PTV.LDD\1107_03 SKM\FIGURES\BP9\1107_040_DO_TCS.MXD 6/17/2020 11:42:40 AM



6176000

6175500

6175000

6174500

Scale 1:10000 or A4

GDA 1994 MGA Zone 55

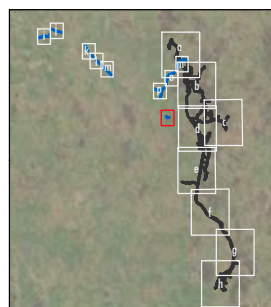
Legend

Rye Park Wind Farm Modified Indicative Development Footprint
 — External Roads

Superb Parrot - Breeding Habitat

Threatened Species Records

Superb Parrot



APPENDIX Jq

Superb parrot habitat, painted honeyeater and white-throated needletail records within the Development Corridor and Indicative Development Footprints